

Nobody looks deeper into infection control

CONTOUR 21+
MARKWIK 21+



Advanced healthcare solutions
from Armitage Shanks

*Armitage
Shanks*

Contents

A proud history of healthcare innovation	04	(HBN) 00-10 (HTM 64)	56
Science first	07	Additional Product Solutions	
Infection control: the 21st century battleground in healthcare	07	Janitorial Unit JU	58
The research behind our developments	08	Clinical Procedure Disposal Units DU H	58
Evolving threats	10	Plaster Sinks PS H	59
Two major risks to water systems	12	Scrub-up Troughs SU H	60
Supporting the battle against infection	14	Clinical Sinks ST A (hospital pattern)	61
CONTOUR 21+ basin. The clinical solution that leaves nothing to chance	16	Domestic Service Sinks SK 1 (general pattern)	61
Our new clinical basin cuts splashing by over 90%	18	Clinical basins (Hospital Pattern) – LB HM	62
MARKWIK 21+ mixer	22	Personal washing basins – LB GL/M	63
MARKWIK 21+ deck mixer and CONTOUR 21+ basin combination – The ultimate solution	30	Hand-rinse basins – LB GS (General Pattern)	63
CONTOUR 21+ WCs	34	Urinals (hospital pattern 1)	64
Compliance –	38	Urinals (hospital pattern 2 – waterless)	64
For the safest healthcare environment		Urinals HygenIQ	65
Hospital Products	40	Technical Information	66
Exceptional Solutions for Hospital Bathrooms		Product Drawings, Specifications and Guarantees	
Semi ambulant WC	42	Hospital Ceramics	68
Independent wheelchair WC	44	Hospital Brassware	74
Assisted WC (assisted ambulant disabled)	46	Guarantee	82
Ambulant shower room	48	Further information	83
Independent wheelchair shower room	50		
Assisted shower room	52		
Clinical wash station	54		
En suite	55		

Designed to defend

Pathogenic bacteria evolve fast. Infection control specialists know that winning the fight against them demands microscopic attention to detail.

This is why we design our products from the inside out. We explore in depth how the materials they are made of can inhibit the growth of harmful bacteria. We examine how to manage the flow of water so bugs cannot grow or be transmitted easily. And we look closely at the structure of our fittings so they are easy to dismantle and disinfect.

The MARKWIK 21+ and CONTOUR 21+ solutions from Armitage Shanks have been developed using this rigorous, scientific approach. Our most advanced healthcare solutions yet, they are the products of years of experience and research.

For healthcare professionals, they represent a powerful new ally in the fight against infection.

A proud history of healthcare innovation

From its beginnings in 1817, Armitage Shanks has always gone to great lengths to produce sanitaryware of exceptional quality. This attention to detail has led to numerous industry 'firsts' in healthcare.



1817

Armitage Shanks established



1911

Healthcare pioneers

Armitage Shanks was the first company to produce products specifically for hospitals.

1967

Rimless technology

A new flushing technology that flushed without a rim, making toilets easier to clean with no hidden spaces for bugs to collect and multiply.

2005

MARKWIK

On introduction, this brassware range set the standard for healthcare fittings.

2014

Antimicrobial bioguard outlet

This innovation uses an antimicrobial lining to reduce the risk of pseudomonas in healthcare environments.

1848

Mass production of sanitaryware

Following the 1848 Public Health Act, we stepped up mass production of ceramic basins. At that time, UK life expectancy at birth was just 40 years. Together with a better understanding of sanitation, improved sanitaryware played a role in raising it toward today's level of 80+ years.



1912

Vitreous china

This new glaze was adopted from tableware to create a non-porous and more easily cleaned surface compared to the fireclay it replaced.



1993

Doc M packs

Armitage Shanks manufactured the first pack designed to comply with access regulations for the less-abled.



2007

CONTOUR 21

The full CONTOUR 21 healthcare range is introduced for the first time.

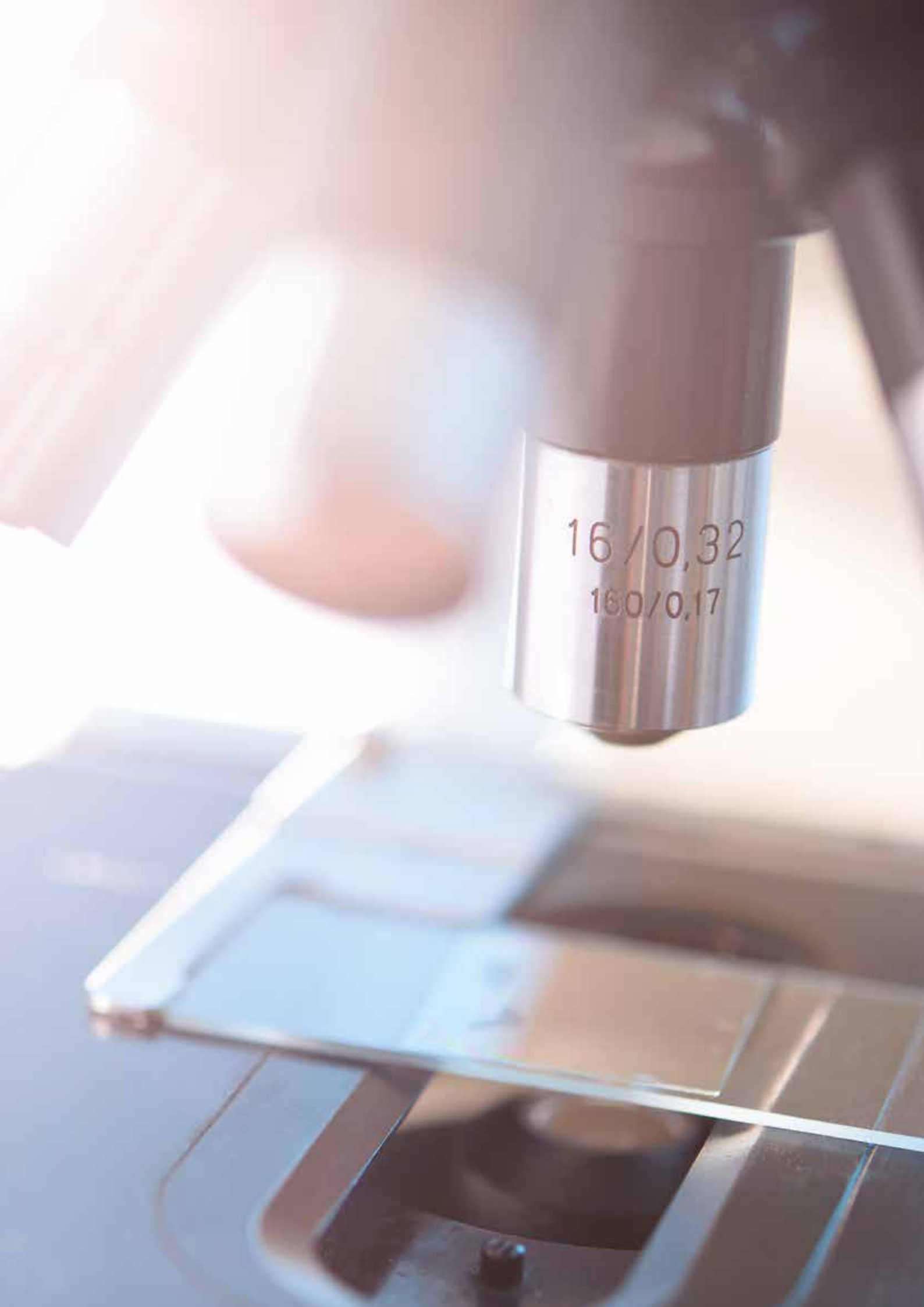


2017

200 YEARS

Launch of the next generation of MARKWIK 21+ and CONTOUR 21+ – taking Armitage Shanks into the next 200 years of being at the forefront of healthcare sanitary innovation.





Science first

Throughout our history, science has been the spur for our innovations in healthcare. When we design new products, we work with experts to understand every aspect of the challenge.

From big picture to fine detail

The infection control environment is constantly changing. Only by understanding this 'big picture' is it possible to design effective methods for preventing the spread of pathogens. One of the most important messages from the science of infection control is that there is no single solution – the risks can only be minimised when products work well together.

The attention to this important detail is evident in the MARKWIK 21+ and CONTOUR 21+ solutions range. To take just one example, the patented CONTOUR basin featuring Hydrofin technology is designed to work with the latest MARKWIK tap to significantly reduce splashing.

Armitage Shanks products are all designed to work in combination, both to meet regulations and to provide the highest levels of infection control.

Infection control: The 21st century battleground in healthcare

Bacteria are everywhere. Many are beneficial and pose little threat to a healthy individual. In a healthcare environment, however, this changes. Patients who are ill or recovering have compromised immune systems. That's why we've worked with healthcare professionals to identify where pathogenic bacteria are most likely to be transferred.

We designed clinical basins that minimise splashing and with back outlets that help reduce the risk of the aerosolisation of bacteria. We've also moved the trap and

pipework to behind the panel, making for a more hygienic solution. And we've even done the same for deck mounted mixers, which are traditionally seen as too challenging.

Poor drainage within a basin itself or its pipework can lead to the growth of biofilm. So we've redesigned the shape of the basin so it drains more efficiently and the waste pipe behind the panel is vertical ensuring water is cleared instantly. We've also explored ways to reduce the amount of water left within the tap where bacteria might grow, by increasing the velocity of water running through it. We've also developed fittings that make it more difficult for bacteria to gain a foothold and we've cut down on the amount of plastics that bacteria might feed on.

The research behind our developments

Our partners

We have been working in partnership with leading scientists and specialists to develop CONTOUR 21+ and MARKWIK 21+.

Goodwin Hartshorn

Industrial designers at Goodwin Hartshorn helped us develop our revolutionary anti-splash Hydrofin for the CONTOUR 21+ basin.

Armitage Shanks Research and Development

Our Wittlich factory in Germany has been at the forefront of product innovation in taps and fittings, developing the first ever ceramic disc cartridge in 1969. Today we have a dedicated team of 32 product engineers across Germany and the UK, focused on product development, including the new MARKWIK 21+ fittings.

University research

Armitage Shanks has worked extensively with universities to increase its understanding of biofilm and bacteria growth.

Armitage Shanks has also used a number of tests that have taken place including measuring the aerosol effect of WC flushing, the cleanability of WCs and testing the new anti-splash technology.



Evolving threats

At Armitage Shanks, we constantly research the risks that water and sanitation systems can present in healthcare facilities. Recent findings confirm that more sophisticated solutions are needed to deal with the fast-changing threat environment.



The potential for water to be both a habitat and a delivery medium for harmful bacteria is well known. What we are discovering now is how tenacious and persistent certain pathogens can be, particularly in the way they develop biofilm. It's important for healthcare professionals to understand this and equip their facilities accordingly.



Biofilm
Bacteria excrete a layer called biofilm to protect their growth. This is a particular problem with pseudomonas aeruginosa, which is both resistant to antibiotics and associated with serious illnesses. Biofilm can build up on surfaces and within appliances.



Bacteria build-up
Unless taps and mixers can be dismantled and autoclaved, they are at risk of long-term colonisation by pathogens and biofilm build-up.



Hidden surfaces
If fixtures are difficult to clean, bacteria can proliferate in areas that are hard to reach and hard to see, for example under a WC rim.



Back outlet basin
If drainage water remains in pipework immediately behind the basin there is an opportunity for harmful bacteria to grow.



Splashing
When water splashes out of basins when water is running, it can spread bacteria up to two metres away, potentially contaminating drug trays, clinical tools and patients themselves.



Stagnant or pooling water
If appliances are not used regularly there is a high risk of bacteria multiplying in pooling water. Even a day without use creates a risk of biofilm build-up. It can cost hospitals huge amounts of money in personnel and heating costs flushing taps and showers to prevent this.

Two major risks to water systems

Without appropriate design and technology features, water systems can be an ideal breeding ground and transmission medium for potentially harmful bacteria.



Legionella

These bacteria, which can cause Legionnaire's disease, colonise water systems. Legionella proliferate at temperatures between 20°C and 45°C and careful system design and risk assessment is needed to manage this pathogen. Control measures include:

- Good overall maintenance and hygiene for water systems
- Appropriate temperatures: cold water should be delivered to the point of mixing below 20°C, and hot water above 55°C
- Cleaning of outlets, including autoclaving detachable spouts and dismantling taps for full disinfection
- Hot water should be stored at or over 60°C and hot and cold supplies should be kept separately
- In high-risk areas, fittings should have thermal disinfection capability and the use of medical filters should be considered



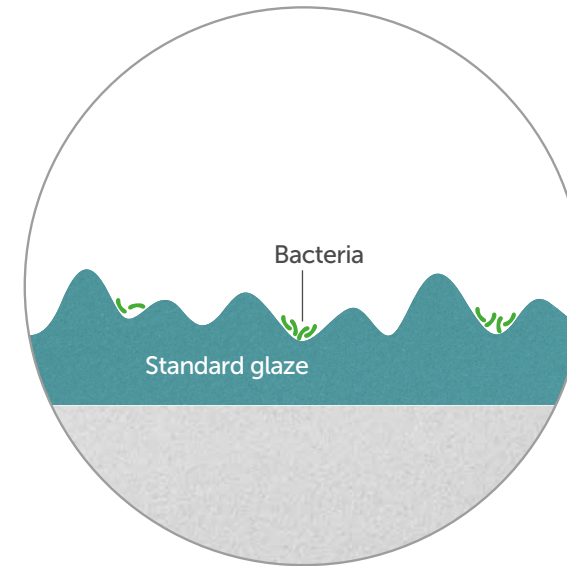
Pseudomonas aeruginosa

Pseudomonas aeruginosa is a common bacterium that is able to thrive on most surfaces. While healthy individuals can usually fight it off, immune-deficient or immunosuppressed people, can be vulnerable to pseudomonas. This bacterium can thrive in water systems, especially the last two metres before the outlet, which means pipes, isolation valves, strainers and the tap itself can become contaminated. Protecting a facility against pseudomonas needs a range of actions, which include:

- Regular checks of the water supply
- Frequent flushing of water systems
- Cleaning of outlets
- Infection control procedures where appropriate
- The use of medical filters in high-risk areas

Supporting the battle against infection

Introducing SmartGuard and SmartGuard+ – our innovative antimicrobial glaze that offers built-in product protection against bacteria.



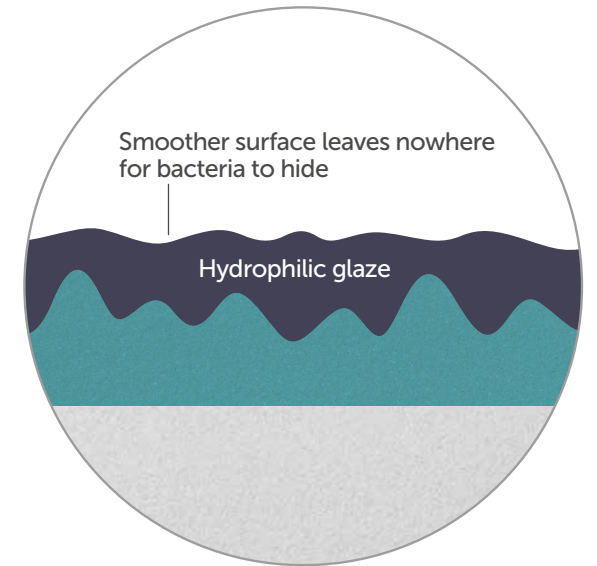
Standard Glazes

Standard glazes are often surprisingly uneven when examined under a microscope giving an almost textured appearance. This can leave pockets for bacteria to grow in as well as being more difficult to clean.

SmartGuard and SmartGuard+

SmartGuard is an antimicrobial agent that is incorporated into the ceramic glaze. It contains ionic silver, which is proven to inhibit the growth of bacteria. As the antimicrobial is built into the glaze, the effects will last the lifetime of the product providing protection day in, day out.

To provide an even more hygienic surface we have introduced SmartGuard+. This combines the benefits of SmartGuard antimicrobial glaze with a far smoother glass like surface.



The "textured" appearance of standard glazes has the dual effect of reducing the efficiency of water drainage from the surface and gives more opportunities for bacteria to adhere to the surface and grow. During the firing process, the additional thin surface layer on the SmartGuard+ flows freely and fills any microscopic indentations in the substrate.

This additional glaze has hydrophilic properties incorporating a very low contact angle with water compared to standard glazes. Effectively water is "pulled" into closer contact with the surface, increasing the surface area being activated by the silver ions and increasing the antimicrobial effect of the glaze surface, as well as promoting a route by which the water can get underneath the dirt – rather than passing over the top.

The clinical solution that leaves nothing to chance



CONTOUR 21+ basin

Infection control professionals know that hygiene depends on rigour.

That's why we developed our MARKWIK 21+ and CONTOUR 21+ ranges to work together – to meet regulations and provide the highest levels of infection control.

Our CONTOUR 21+ basin with SmartGuard+ has a smooth hydrophilic glaze containing antimicrobial additives, and this, together with an innovative shape, makes it our most advanced basin for healthcare yet.

1. Anti-splash design

The CONTOUR 21+ basin features our patented Hydrofin to significantly reduce splashing.

It is fully effective when paired with the MARKWIK 21+ mixer. The basin itself has been developed in partnership with Goodwin Hartshorn, using fluid dynamics to optimise the removal of water and debris.

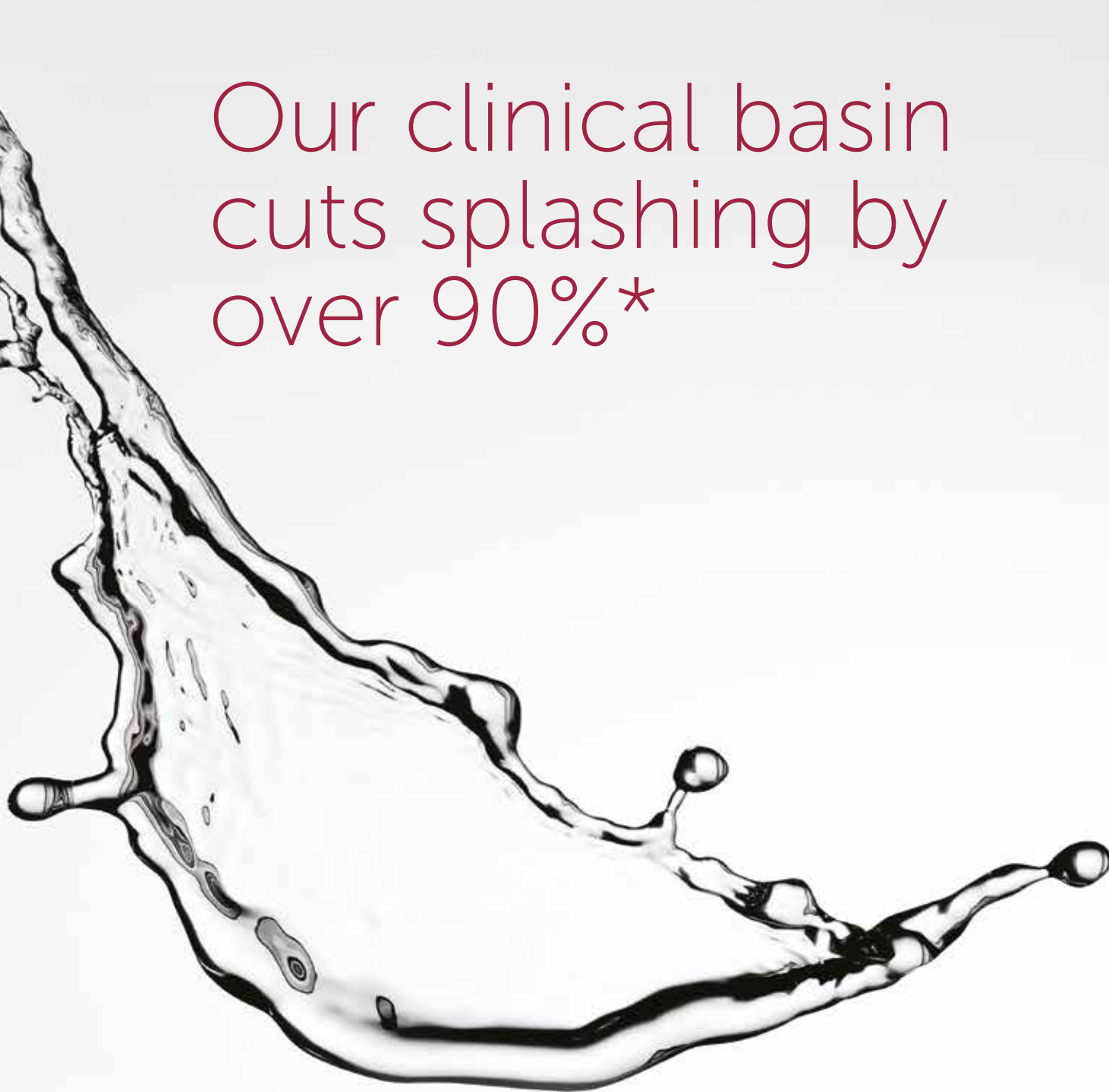
3. Better drainage

Developed from CFD experts at Sheffield Hallam University, CONTOUR 21+ features a design that improves flow and reduces water retention. A simplified waste assembly removes the "steps" and hanging points that can lead to pooling. It enables water to drain away quickly and smoothly.

2. High-tech hygienic surface

Our healthcare ceramics use an extra-smooth hydrophilic glaze – SmartGuard+ – making it easier for water to drain off and harder for bacteria to adhere. SmartGuard+ is an ionic silver antimicrobial additive, which helps prevent the build-up of biofilm. This protection lasts for the lifetime of the product, making cleaning easier and reducing the threat of cross-contamination.

Our clinical basin cuts splashing by over 90%*



*splash reduction recorded during development testing

If there is bacterial flora in the basin, it can be imperceptibly splashed onto surrounding surfaces – particularly during hand washing.

Standard hospital basin risks

Our research shows that with standard hospital basins, running water can splash onto surrounding floors and surfaces. These splashes have been measured up to two metres away from the basin, potentially falling on beds, clothing and hospital equipment.



Unique fin design

It's important that washing facilities reduce opportunities for the transfer of bacteria within basins. That's why the CONTOUR 21+ range incorporates our unique Hydrofin which is moulded into the ceramic and cuts splashing by over 90%.

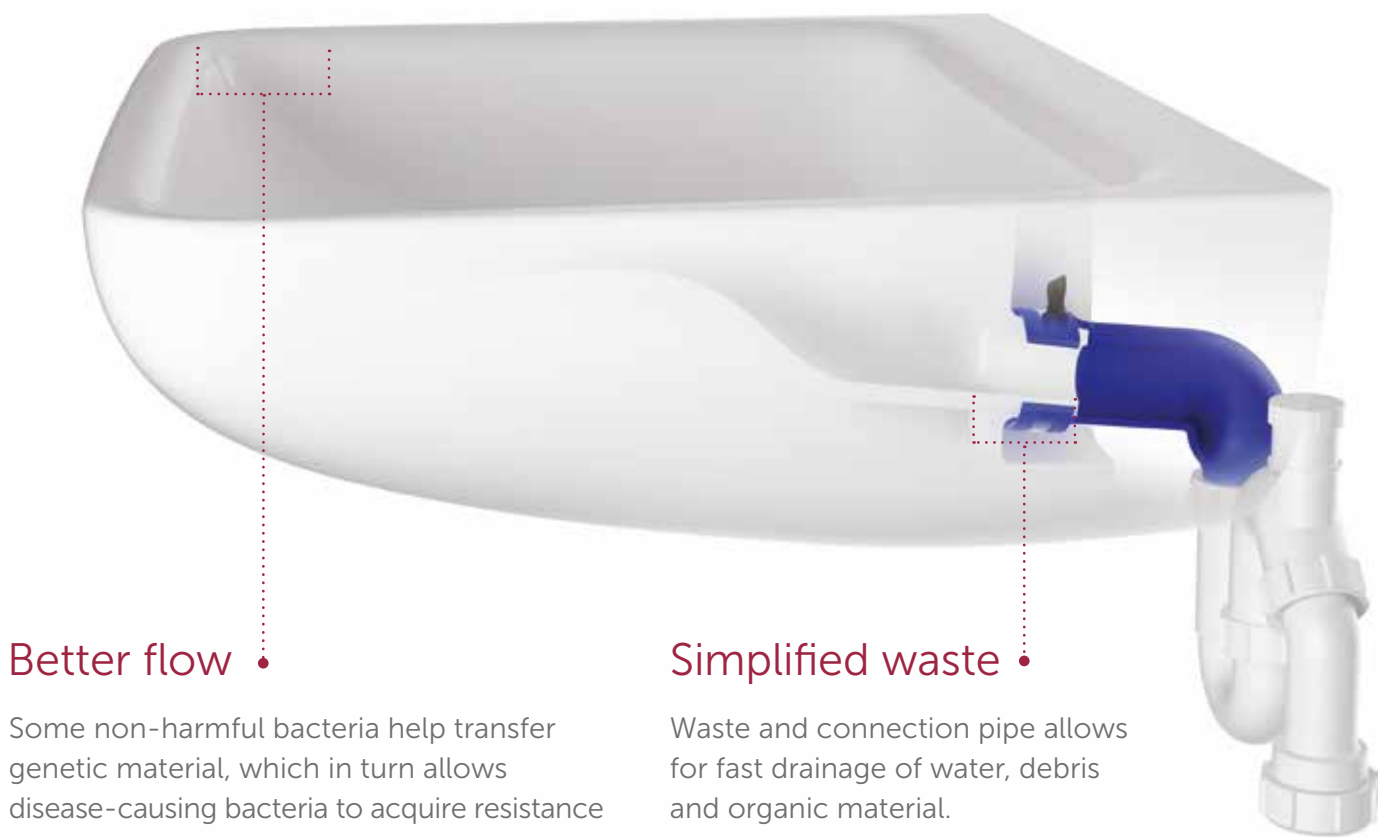


Reduced splash

The Hydrofin design, in combination with the larger surface area of the basin, means that water hits at a shallower angle and its splash is deflected to either side of the basin. It is fully effective when paired with the MARKWIK 21+ mixer.

Better drainage

Water systems are complex. Successful infection control depends on a close examination of every potential opportunity for harmful bacteria to grow and spread. We've combined the latest medical knowledge, materials, science and design techniques to produce a range of innovations that help create safer healthcare environments.



Better flow

Some non-harmful bacteria help transfer genetic material, which in turn allows disease-causing bacteria to acquire resistance genes. That's why we created angles within the basin design to improve water flow and drainage. Thinner, more angular rims also aid drainage and prevent standing water.

Simplified waste

Waste and connection pipe allows for fast drainage of water, debris and organic material.

When designing basins for healthcare use, effective water drainage is one of the most important issues to address.



Less to clean

Basin design features a smaller back area to reduce the surface area that needs cleaning. The larger bowl area helps contain splashes.

Efficient trap design

An anti-syphon valve in the Contour 21+ trap prevents negative pressure from breaking the water seal and stops foul air coming up through the waste.



Easier to install

Fixings are made of stainless steel for chemical resistance and anti-corrosion. Simplified, "click to fit" attachments and a flexible waste mean installation can be carried out by one person. Our back outlet basin, reduces fitting from eighteen minutes for two people down to seven minutes for one person.

Our back outlet basins, can be fitted by one person in seven minutes

MARKWIK 21+ mixer

Research-driven innovation has created a new healthcare standard for taps and mixers, with a range of innovative patent-pending features, from autoclave-ready spouts to built-in thermal cleansing features.



Submerge and disinfect

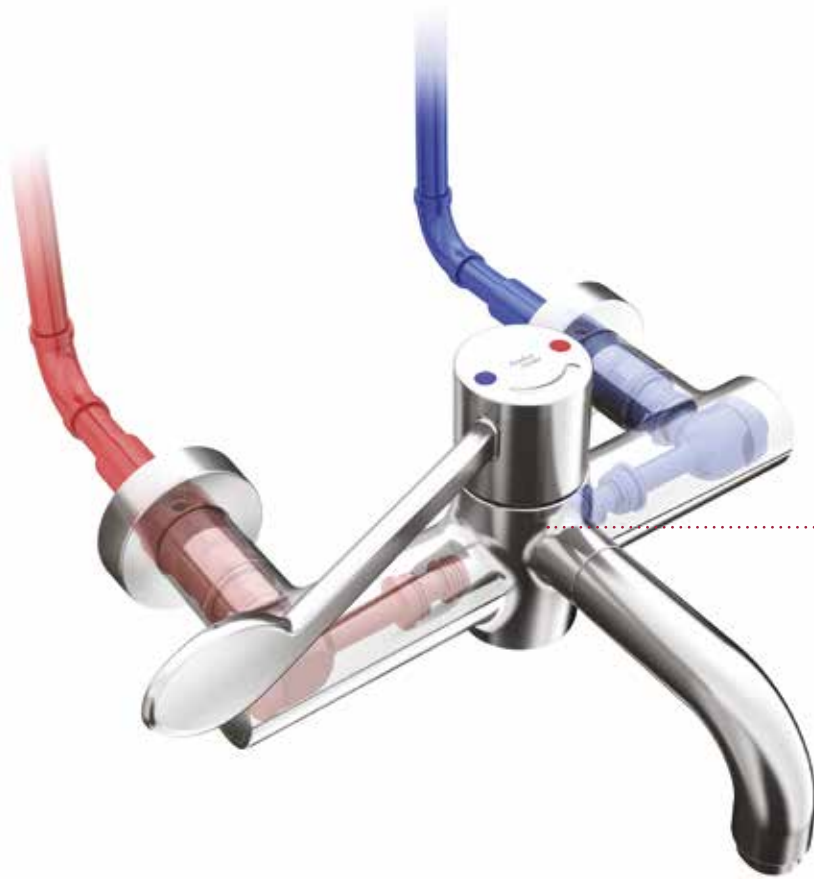
All MARKWIK 21+ mixers can be fully dismantled for disinfection, with internal components designed to withstand 80°C*, and detachable outlets are designed to withstand 135°C for autoclaving.



Autoclave-ready spouts

The MARKWIK 21+ detachable spout allows autoclave cleaning to prevent biofilm attachment and help reduce the risk of bacterial infection.

*Maximum inlet supply temperature during use is 65 degrees.



• Minimal dead-legs

By mixing water closer to the point of discharge, MARKWIK 21+'s integral thermostat minimises 'dead leg' areas of warm water where bacteria can grow. This is compliant with HTM 04-01 Part A, which states that thermostatic mixing devices should be fitted directly to the outlet or integral with it.



• Thermal cleanse

MARKWIK 21+ mixers are designed for thermal cleansing and are equipped with a built-in thermal cleansing feature. This allows the maximum blend temperature stop to be overridden, using the hot water supply temperature in the system, for the most effective cleanse process possible.

Intelligent cleaning •

Auto-flush technology ensures that MARKWIK 21+ mixers that are paired with electronic time-flow sensor controls are flushed through with water at least every 24 hours, helping to prevent the formation of bacteria.



• Hydropurge

The Hydropurge system in MARKWIK 21+ mixers flushes any debris and waste that gets into the system during installation, reducing the high risk of contamination when new facilities are opened. The same port can be used for inlet water sampling.



Antimicrobial outlets

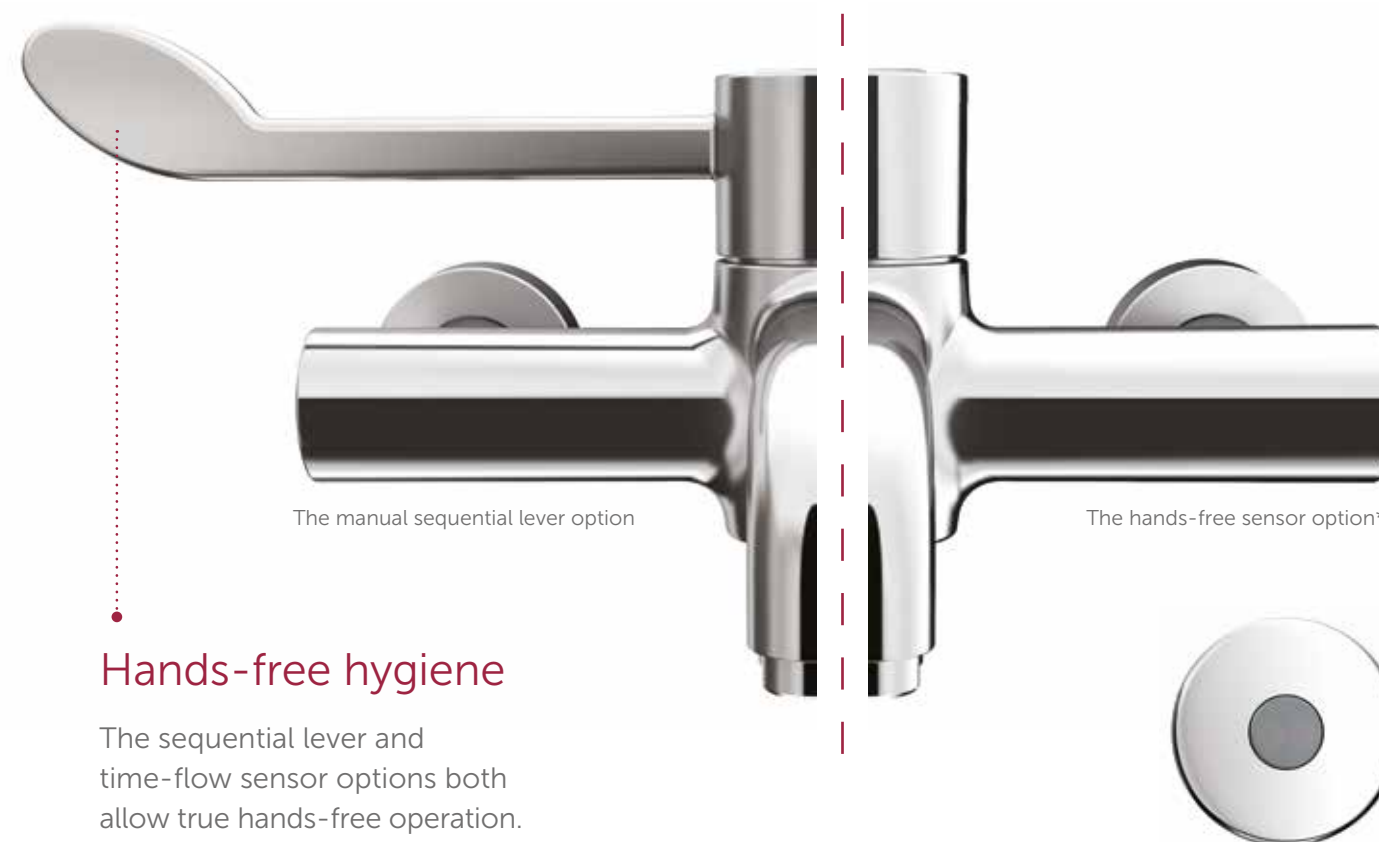
Traditional outlets have flow straighteners that can become contaminated over time and provide a haven for harmful bacteria.

MARKWIK 21+ mixers feature BioGuard a patent-pending copper lined outlet that helps prevent Biofilm attachment and reduces the risk of pseudomonas infection.



Clean water on demand

All MARKWIK 21+ mixers are compatible with Pall Medical filters, so sterilising-grade water can be made available on demand.



The manual sequential lever option

The hands-free sensor option*

Hands-free hygiene

The sequential lever and time-flow sensor options both allow true hands-free operation.

*Sensor position shown here for illustrative purposes.

Attention to detail

HTM 04-01 Part C notes that complex tap assemblies can be more prone to P. Aeruginosa colonisation. With a simplified design and the majority of polymers removed, MARKWIK 21+ holds a lower static water volume and has a minimised bio-footprint with fast cooling.

Wash biofilm away

When water flows with more force and turbulence it helps to remove biofilm build-up. MARKWIK 21+ mixers feature small-bore antimicrobial pipes and a simplified design to promote this effect.



Maintaining safe touch attributes

Plastic components resist heat transfer to the mixer body.

Water retained within a tap outlet can become heavily contaminated and in turn contaminate a high number of users.

Fewer polymers, more metal

To discourage bacteria, the MARKWIK 21+ cartridge is manufactured with more brass and less plastic. Where plastic is used, we have chosen grades that are less attractive to bacteria.



Thermostatic cartridge

Thermostatic cartridge features a one-piece design for ease of changing and cleaning, and uses minimal plastics, reducing bacteria build-up compared with other designs.

MARKWIK 21+ has 52% less waterways*

MARKWIK 21+ has 34% lower static water volume*

MARKWIK 21+ is over 85% brass reducing the polymer content by 66%

*Compared to existing product.

The ultimate solution

The MARWIK 21+ deck mixer and CONTOUR 21+ basin combination is the first truly clinical deck mixer solution. The mixer is demountable for disinfection and maintenance, while the basin features a hidden trap behind a back outlet.



Bacterial flora can reach high levels in a basin's drain outlet. In many cases that flora can be multiresistant. Poor cleaning can lead to that bacteria being transferred to taps and spreading from there.



The MARKWIK 21+ deck mixer shown in an en-suite bathroom

First fully clinical deck tap

We are also bringing the advantages of clinical hand basin hygiene to general hospital areas – such as wheelchair-accessible toilets and patient en-suites – with the detachable MARKWIK 21+ thermostatic mixer and basin.

In these areas, wall-mounted mixer may not be accessible, so a deck-mounted solution is needed. However, traditional deck mixers can be hard to clean and wash basins with exposed traps can be less hygienic.

The first truly clinical deck mixer solution

Fully demountable

Every detail of our deck tap is designed to remove risks.



Submerge and disinfect

All MARKWIK 21+ mixers can be fully dismantled for disinfection, with internal components designed to withstand 80°C*, and detachable outlets are designed to withstand 135°C for autoclaving.

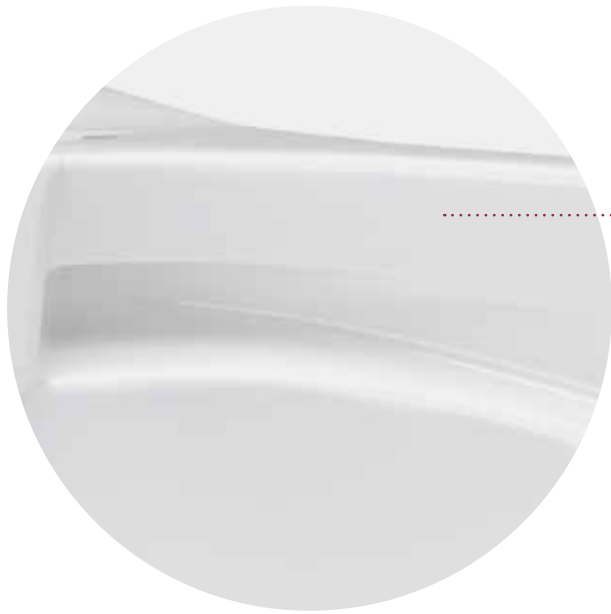


The basin features a completely concealed trap and waste, which is more hygienic than solutions with exposed traps that are difficult to clean.

*Maximum inlet supply temperature during use is 65 degrees.

CONTOUR 21+ WCs

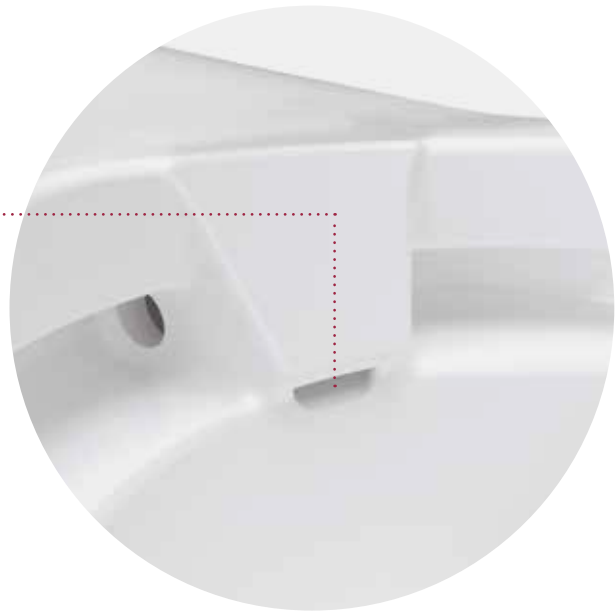
Featuring rimless design and antimicrobial surfaces, our latest WC helps create the most hygienic healthcare environments possible.



Rimless design
Traditional WC rims provide an ideal habitat for bacteria. The design of CONTOUR 21+ WCs removes this haven for pathogens whilst making the units easier and quicker to clean.

A cleaner view

The injector slot and increased visible space within the bowl make it easier to see where cleaning is needed because there are no nooks and crannies for harmful bacteria to hide.



Improved flush
CONTOUR 21+ is designed so that water is channelled over more of the bowl, helping to keep it cleaner.



• Antibacterial coating

SmartGuard protection is manufactured into all our WCs to prevent the build up of bacteria. And the smooth SmartGuard+ glaze on the pan inhibits soiling, which reduces the opportunity for bacteria to take hold.

More hygienic fixing •

The wall hung pans have been redesigned with concealed fixation. The smooth sides and lack of fixation recess are more hygienic, easier to clean and more installer friendly.



• Longer outlet pipe

A longer outlet pipe on extended bowl versions makes installation easier and allows for a simple, quick inspection of water connection joints.

Back-to-wall fixation uses dual floor fixings to ensure greater stability of the pan.



Toilet seats and grab rails

- Durable thermo-set toilet seats with seat retainers and stainless steel hinges give the feeling of quality, strength and stability and ensure that the seat doesn't move during use or lateral transfer from a wheelchair. Seats are made from urea, a naturally hygienic material.



- Grab rails are made from 33mm polyester-coated aluminium (except stainless steel and chrome rails), and are available in a variety of colours to provide contrast for the visually-impaired: white, blue, grey, charcoal, or stainless steel. The robust hinged arm support that folds up out of the way is capable of supporting 200kg. Grab rails also feature concealed fixings for added hygiene.
- Both of the above products will not be damaged during hydrogen peroxide vapour cleansing.

For the safest healthcare environment

With the MARKWIK 21+ and CONTOUR 21+ ranges, specifiers and infection control professionals can create clinical sanitary facilities with the highest levels of protection against healthcare-acquired infections.

Fully compliant

Our sanitaryware ensures your facilities comply with the latest performance requirements for infection control, environmental performance and disabled access.



Healthcare Document	Title/area covered	Covers
HBN 00-02	Sanitary Spaces	Guidance on designing bathrooms, shower rooms, changing areas and WCs in healthcare settings
HTM 04-01 PART A	Safe water in healthcare premises Part A: Design, installation and commissioning	This current review and update of HTM 04-01 is intended to move users of the document towards a holistic management of water systems via Water Safety Groups (WSGs), Water Safety Plans (WSPs) and other initiatives
HBN 00-09	Infection control in the built environment	This guidance, aimed at all providers of NHS care, discusses the various stages of a capital build project from initial concept to post-project evaluation. It highlights the major infection prevention and control (IPC) issues and risks to address at each particular stage to achieve designed-in IPC
HBN 00-10 PART C	Sanitary Assemblies	Guidance in sanitary assemblies for England, Wales and Northern Ireland
HTM64	Sanitary Assemblies	Guidance in sanitary assemblies for Scotland



Designed for sustainability

From the way they are manufactured to their performance in use, MARKWIK 21+ and CONTOUR 21+ products are designed to reduce environmental impacts, help you meet sustainability goals and achieve high BREEAM and LEED scores.

- Efficient manufacturing. More than 80% of wastes (clay effluent and fired pieces not making the relevant grade i.e. pitchers) are recycled into bricks, roof tiles, and wall & counter surfaces.
- Reduced waste. Introduced in 2006, a glaze filtration system reduces waste by 900 tonnes per year and cuts discharge by 12,000m³ each year.
- Less water. We design our products to use the optimum amount of water and eliminate unnecessary waste. Many of our WCs flush on low dual flush water volumes and mixers and taps are regulated. Our sensor mixers stop water flow after a preset time to reduce water use.

Built to last

MARKWIK 21+ and CONTOUR 21+ are manufactured to stand up to the rigorous cleaning regimes in healthcare facilities. All sanitaryware is finished in a high performance glaze for long life and colour retention.

Our products offer long guarantees:

Lifetime

CERAMIC PRODUCTS

5 years

MIXERS AND FITTINGS

All mixers use seals that prevent damage by commercial cleaning products.

Low maintenance

Minimising downtime is essential, so ease of cleaning and servicing is at the heart of our design philosophy. CONTOUR 21+’s organic designs allow for faster and effective cleaning while MARKWIK 21+ mixers can be easily serviced, or dismantled for autoclaving. Panel-mounted mixers can be serviced from the front, with no need to remove wall panels.



Hospital Products Exceptional Solutions for Hospital Bathrooms

Contents

Semi ambulant WC	42
Independent wheelchair WC	44
Assisted WC (assisted ambulant disabled)	46
Ambulant shower room	48
Independent wheelchair shower room	50
Assisted shower room	52
Clinical wash station	54
En suite	55

The following pages detail sanitary assembly solutions that meet government guidance and legislation.

Semi ambulant WC



S0435HY

CONTOUR 21+
40cm back outlet basin
with tap deck, RH.

A6696AA

MARKWIK 21+
Thermostatic basin
mixer with demountable
body, detachable spout
and copper inlets.

S0440HY

CONTOUR 21+
Raised height rimless
back-to-wall WC pan
– standard projection.

S4066RN

CONTOUR 21
Top fix toilet seat
in charcoal with
retaining buffers.

S6361RN

650mm hinged drop
down arm support
in charcoal.

S6363RN

Toilet roll holder
in charcoal.

S6454RN

5 x 600mm grab rails
in charcoal.

S4504MY

Contemporary
flushplate.

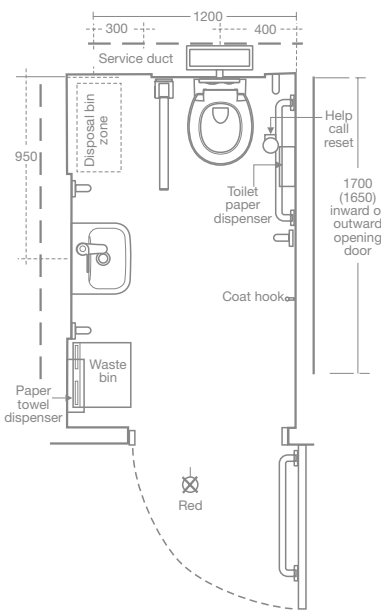
S364367

Conceala 2 cistern.

A6791NU

Fixing kit for Markwik
21+ mixer A6696 when
used with Contour 21+
back outlet basins.

RH – right hand LH – left hand



Independent wheelchair WC



S0435HY

CONTOUR 21+
40cm back outlet basin
with tap deck, RH.

A6696AA

MARKWIK 21+
Thermostatic basin
mixer with demountable
body, detachable spout
and copper inlets.

S0437HY

CONTOUR 21+
Raised height rimless
back-to-wall WC pan
– 70cm projection.

S4066RN

CONTOUR 21
Top fix toilet seat
in charcoal with
retaining buffers.

S688467

Back rest cushion.

S6481RN

CONTOUR 21
Back rest rail
in charcoal.

S6361RN

1 or 2 x 650mm hinged
drop down arm support
in charcoal.

L6363RN

Toilet roll holder
in charcoal.

S6454RN

4 x 600mm grab rails
in charcoal.

S4504MY

Contemporary
flushplate.

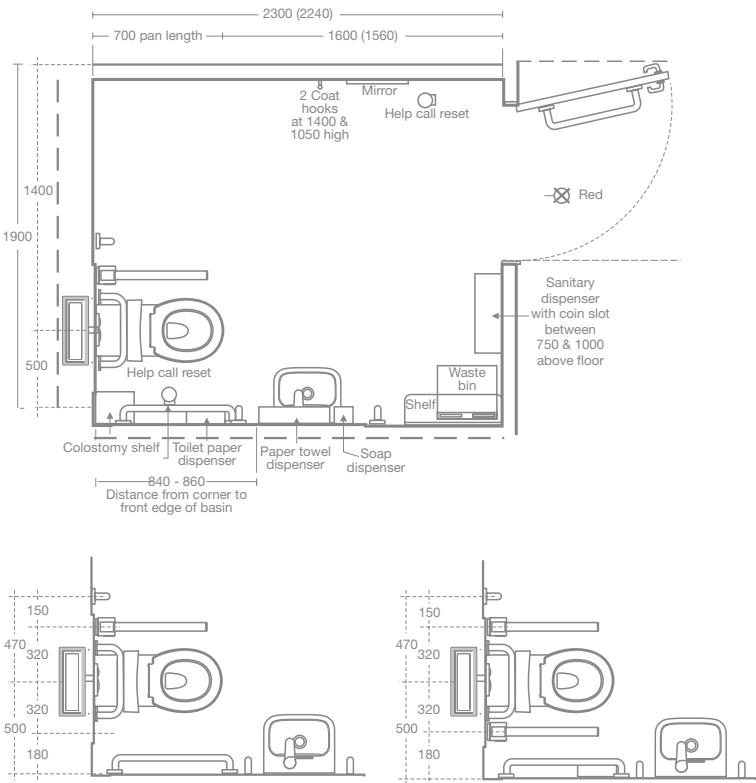
S364367

Conceala 2 cistern.

A6791NU

Fixing kit for Markwik
21+ mixer A6696 when
used with Contour 21+
back outlet basins.

RH – right hand LH – left hand



Assisted WC (assisted ambulant disabled)



- S0432HY

CONTOUR 21+
50cm back outlet basin with tap deck, RH.
- A6696AA

MARKWIK 21+
Thermostatic basin mixer with demountable body, detachable spout and copper inlets.
- S0441HY

CONTOUR 21+
Rimless wall hung WC pan – 70cm projection.
- S406636

CONTOUR 21
Top fixed toilet seat in blue with retaining buffers.
- S688467

Back rest cushion.
- S648136

CONTOUR 21
Back rest rail in blue.
- S636136

2 x 650mm hinged drop down arm support in blue.
- S636336

Toilet roll holder in blue.
- S645436

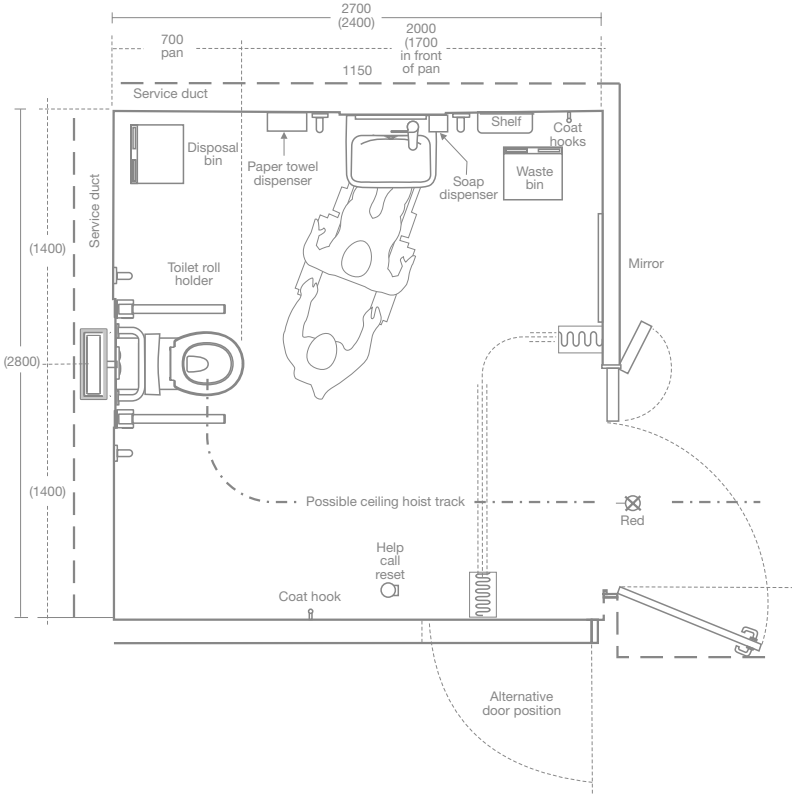
4 x 600mm grab rails in blue.
- S362067

Conceala 2 cistern.
- S4516AA

Spatula lever.
- A6791NU

Fixing kit for Markwik 21+ mixer A6696 when used with Contour 21+ back outlet basins.

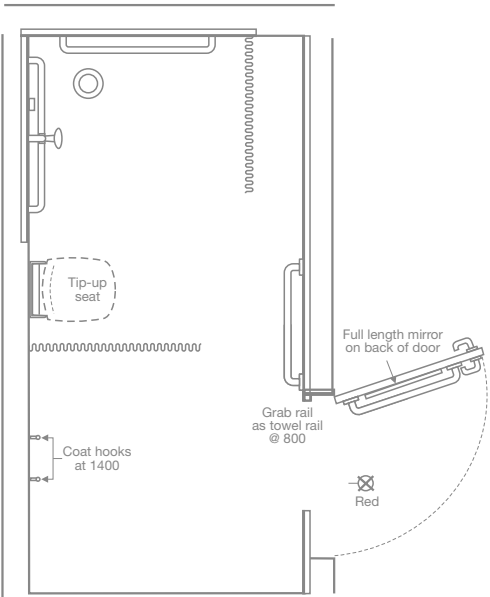
RH – right hand LH – left hand



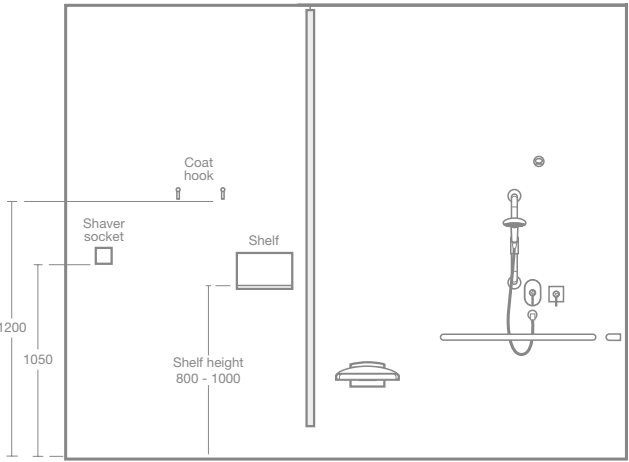
Ambulant shower room



- | | |
|---|--|
| A4129AA
CONTOUR 21
Built in thermostatic
sequential shower. | S6632XK
Shower seat in grey. |
| B9304AA
Shower handset. | S9313AA
Anti vandal shower fixed
shower head. |
| A860110AA
Smooth shower hose. | S6454LJ
5 x 600mm grab rails
in grey. |
| S6477LJ
Adjustable handset
holder in grey. | S6751AC
Shower curtain rail. |
| L6919AA
Shower diverter. | S675001
Shower curtain. |
| E4705AA
Shower wall elbow. | B1364AA
Category 5 hose
retainer. |



Overhead elavation



Side elavation

Independent wheelchair shower room



S0435HY

CONTOUR 21+
40cm back outlet basin with tap deck, RH.

A6696AA

MARKWIK 21+
Thermostatic basin mixer with demountable body, detachable spout and copper inlets.

S0441HY

CONTOUR 21+
Rimless wall hung WC pan – 70cm projection.

S4066AC

CONTOUR 21
Top fix toilet seat in white with retaining buffers.

S6361AC

2 x hinged drop down arm support in white.

S6363AC

Toilet roll holder.

S688467

Back rest cushion.

S6481AC

Back rest rail in white.

A4129AA

CONTOUR 21
Built in thermostatic sequential shower.

B9304AA

Shower handset.

A860110AA

Smooth shower hose.

S6477AC

Adjustable handset holder.

L6919AA

Shower diverter.

E4705AA

Shower wall elbow.

S6632XK

Shower seat in grey.

S9313AA

Anti vandal shower fixed shower head.

S6454AC

7 x 600mm grab rails in white.

S6751AC

Shower curtain rail.

S675001

Shower curtain.

S6635XK

Shower seat back support in grey.

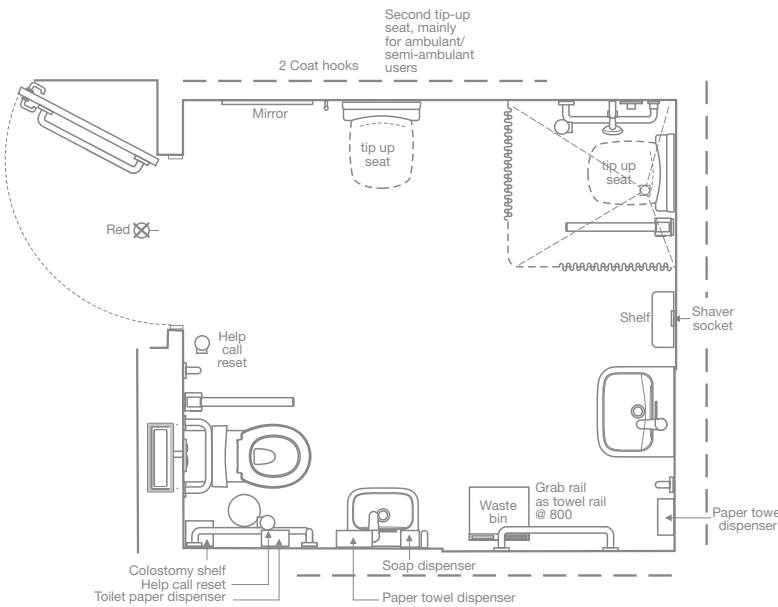
S6457AC

1 x 800mm grab rail in white.

B1364AA

Category 5 hose retainer.

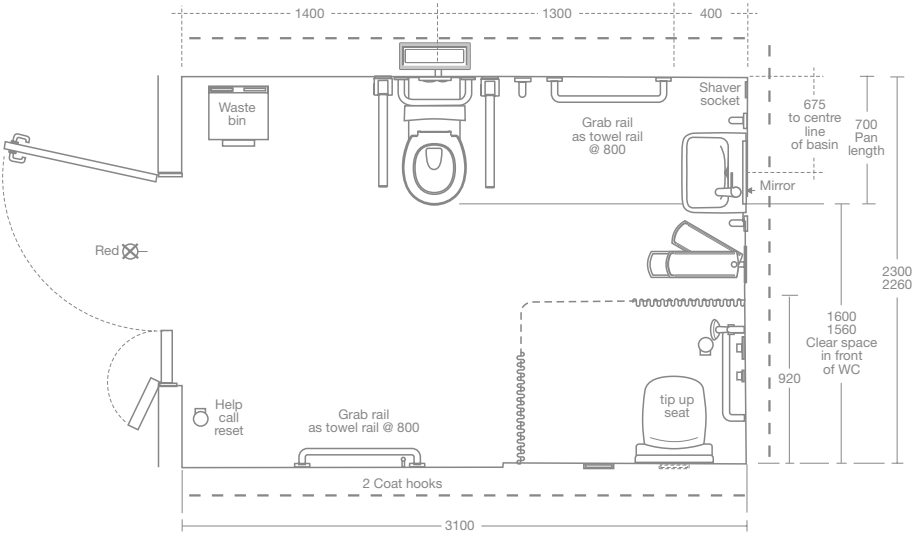
RH – right hand LH – left hand



Assisted shower room



<p>S0441HY CONTOUR 21+ Rimless wall hung WC pan – 70cm projection.</p> <p>S4066RN CONTOUR 21 Top fix toilet seat in blue with retaining buffers.</p> <p>S6361RN 2 x 650mm hinged drop down arm support in charcoal.</p> <p>S6363RN Toilet roll holder in charcoal.</p> <p>S6454RN 6 x 600mm grab rails in charcoal.</p>	<p>S0431HY CONTOUR 21+ 50cm back outlet basin with tap deck, LH.</p> <p>S6696AA CONTOUR 21 Single lever one taphole sequential thermostatic basin mixer.</p> <p>A4129AA CONTOUR 21 Built in thermostatic sequential shower.</p> <p>S6477RN Adjustable handset holder in charcoal.</p> <p>L6919AA Shower diverter.</p>	<p>S6751AC Shower curtain rail.</p> <p>S675001 Shower curtain.</p> <p>E4705AA Shower wall elbow.</p> <p>A860110AA Smooth shower hose.</p> <p>B9304AA Shower handset.</p> <p>S9313AA Anti vandal fixed shower head.</p> <p>S6481RN CONTOUR 21 Backrest rail in charcoal.</p>	<p>S688467 Backrest cushion.</p> <p>S6632XK Shower seat in grey.</p> <p>S6635XK Shower seat back support in grey.</p> <p>B1634AA Category 5 hose retainer.</p> <p>S362067 Conceala 2 cistern.</p> <p>S4516AA Spatula lever.</p> <p>A6791NU Fixing kit for Markwik 21+ mixer A6696 when used with Contour 21+ back outlet basins.</p>
--	--	--	---



Clinical wash station



S0444HY
CONTOUR 21+
60cm back outlet basin.

A6682AA
MARKWIK 21+
Demountable panel
mounted mixer with
detachable spout.

En suite



S0432HY
CONTOUR 21+
50cm back outlet basin
with tap deck, RH.

A6696AA
MARKWIK 21+
Thermostatic basin
mixer with demountable
body, detachable spout
and copper inlets.

S0437HY
CONTOUR 21+
Raised height rimless
back-to-wall WC pan
– 70cm projection.

S406636
CONTOUR 21
Top fix toilet seat in blue
with retaining buffers.

S6361AC
5 x hinged drop down
arm support.

S6363AC
Toilet roll holder.

S688467
Back rest cushion.

S6481AC
CONTOUR 21
Back rest rail in white.

A4129AA
CONTOUR 21
Built in thermostatic
sequential shower.

B9304AA
Shower handset.

A860110AA
Smooth shower hose.

S6477AC
Adjustable handset
holder in white.

L6919AA
Shower diverter.

E4705AA
Shower wall elbow.

S6454AC
2 x 600mm grab rails.

S4504MY
Contemporary
flushplate.

S364367
Conceala 2 cistern.

S9313AA
Shower diverter.

A6791NU
Fixing kit for Markwik
21+ mixer A6696 when
used with Contour 21+
back outlet basins.

B1634AA
Category 5 hose retainer

RH – right hand LH – left hand



(HBN) 00-10 (HTM 64) Additional Product Solutions

Contents

Janitorial Unit JU	58
Clinical Procedure Disposal Units DU H	58
Plaster Sinks PS H	59
Scrub-up Troughs SU H	60
Clinical Sinks ST A (hospital pattern)	61
Domestic Service Sinks SK 1 (general pattern)	61
Clinical basins (Hospital Pattern) – LB HM	62
Personal washing basins – LB GL/M	63
Hand-rinse basins – LB GS (General Pattern)	63
Urinals (hospital pattern 1)	64
Urinals (hospital pattern 2 – waterless)	64
Urinals HygenIQ	65

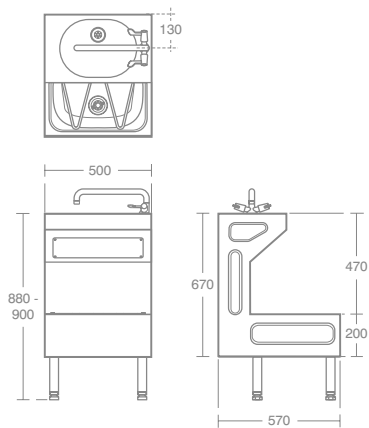
The following pages detail products that meet the necessary requirements of (HBN) 00-10 and HTM 64.

Janitorial
Unit JU



S6556MY

Janitorial unit with mixer tap in stainless steel.



Clinical Procedure Disposal Units DU H



S6563MY

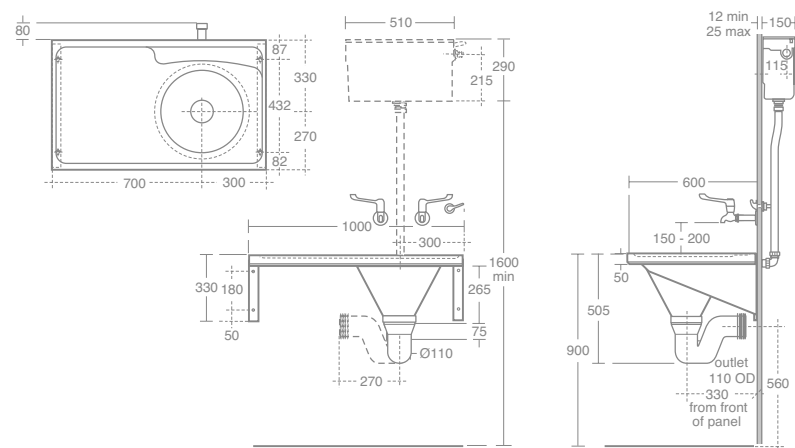
Stirling right hand slop
hopper in stainless steel.

S8270AA
MARKWIK 21
Lever action bib taps.

B1684AA

100mm extension.

B1686AA
1/2" wall mount for
concealed plumbing.



Plaster Sinks PS H



S6558MY

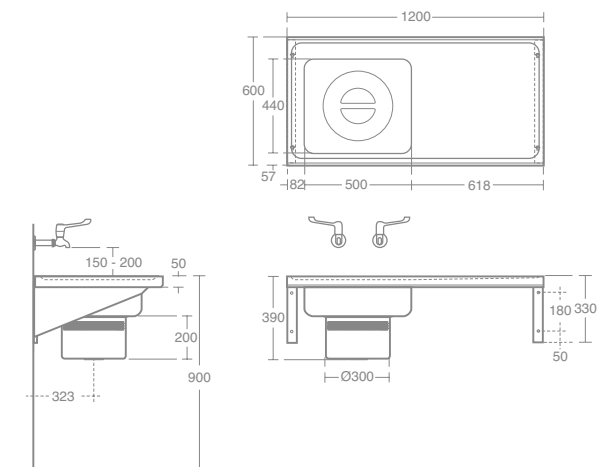
Clyde right hand plaster sink and work surface in stainless steel.

S8270AA
MARKWIK 21
Lever action bib taps.

B1684AA

100mm extension.

B1686AA
1/2" wall mount for
concealed plumbing.



Scrub-up Troughs SU H



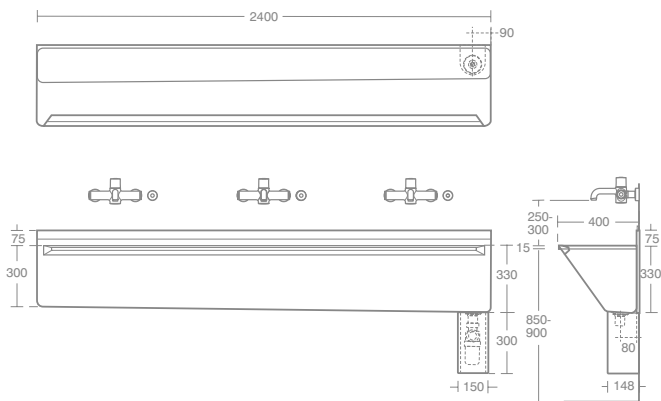
- S2877MY**
Firth scrub-up trough
240cm RH waste.

Variants
S2876MY
Firth scrub-up trough
240cm LH waste.
- S2873MY**
Firth scrub-up trough
180cm LH waste.

S2874MY
Firth scrub-up trough
180cm RH waste.
- S2870MY**
Firth scrub-up trough
80cm LH waste.

S2872MY
Firth scrub-up trough
80cm RH waste.
- Accessories**
A6684AA
MARKWIK 21+
Demountable panel
mounted mixer
with sensor and
detachable spout.

RH – right hand LH – left hand



Clinical Sinks ST A (hospital pattern)



- S5987MY**
Doon sink 120cm, single
bowl with left hand drainer,
no tapholes and no overflow.

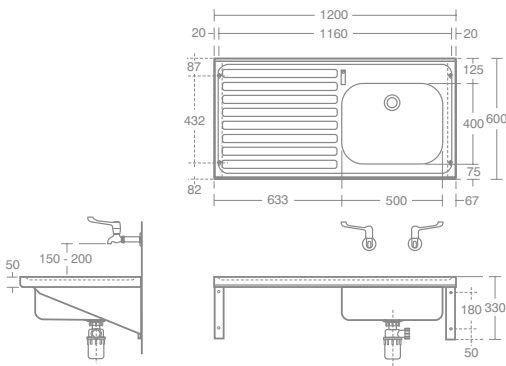
Variants
S5986MY
Doon sink 120cm, single
bowl with left hand drainer,
2 tapholes and no overflow.

S5926MY
Doon sink 120cm, single
bowl with right hand drainer,
2 tapholes and no overflow.
- S5985MY**
Doon sink 120cm, single
bowl with right hand drainer,
no tapholes and no overflow.

Accessories
S8270AA
MARKWIK 21
Lever action bib taps.

B1684AA
100mm extension.

B1686AA
1/2" wall mount for
concealed plumbing.



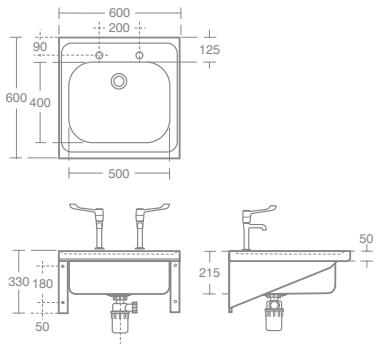
Domestic Service Sinks SK 1 (general pattern)



- S5999MY**
Doon 60 x 60cm sink.

Variants
S6000MY
No taphole option.

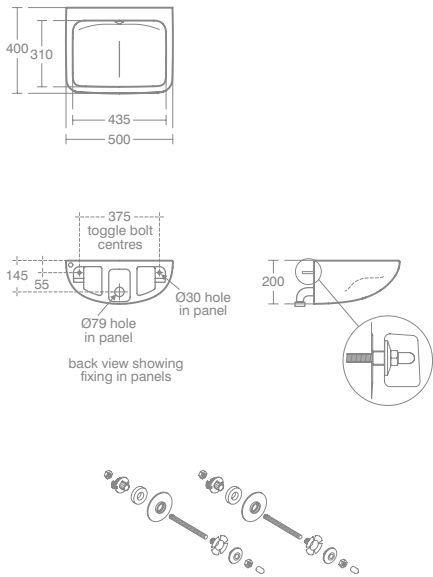
Accessories
S8265AA
MARKWIK 21
High neck sink pillar taps.



Clinical basins (Hospital Pattern) – LB HM



- S0430HY**
CONTOUR 21+
50cm back outlet basin with Hydrofin.
- S0444HY**
CONTOUR 21+
60cm back outlet basin with Hydrofin.



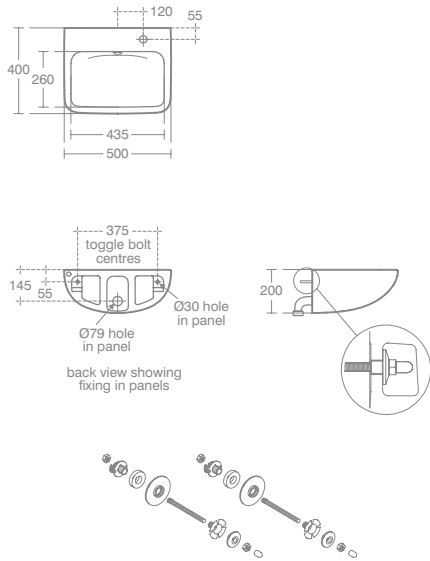
Personal washing basins – LB GL/M

Hand-rinse basins – LB GS (General Pattern)



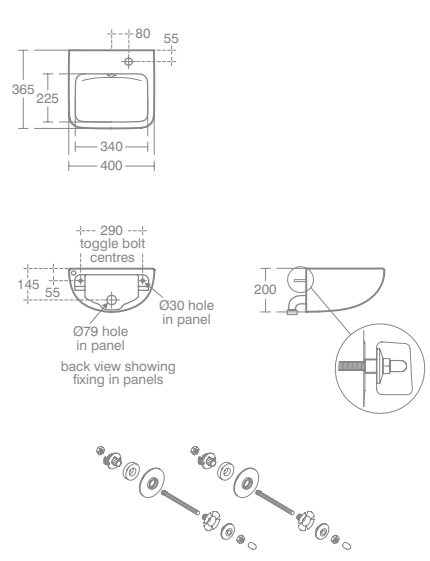
- S0432HY**
CONTOUR 21+
50cm back outlet basin with tap deck, RH.
- S0431HY**
CONTOUR 21+
50cm back outlet basin with tap deck, LH.
General pattern back outlet with left and right hand tap options.

RH – right hand LH – left hand



- S0435HY**
CONTOUR 21+
40cm back outlet basin with tap deck, RH.
- S0433HY**
CONTOUR 21+
40cm back outlet basin with tap deck, LH.
General pattern back outlet washbasin with left and right hand tap options.

RH – right hand LH – left hand



Urinals

(hospital pattern 1)

Urinals (hospital

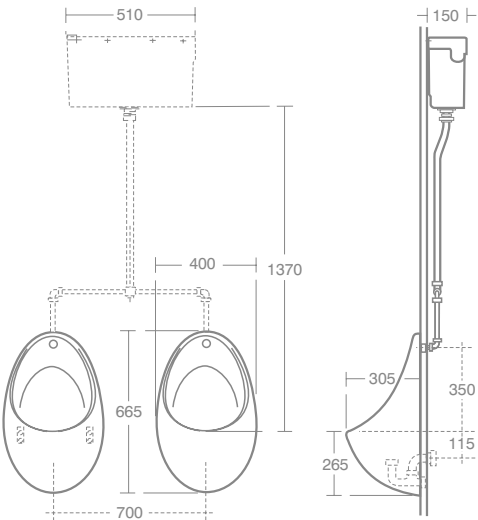
pattern 2 – waterless)



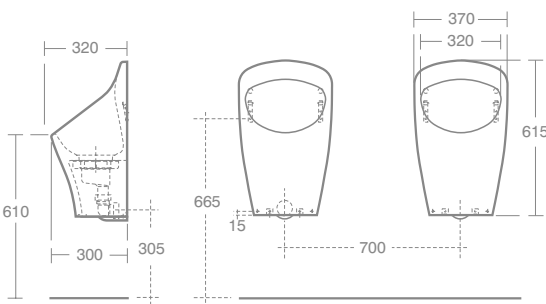
Urinals HygenIQ



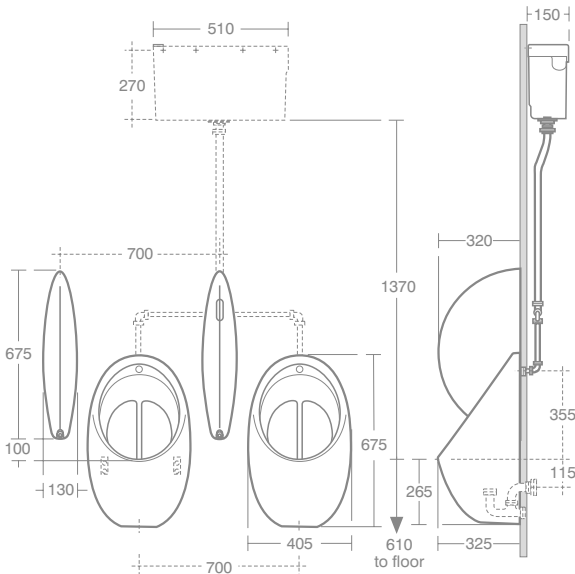
S611001
CONTOUR 21
Urinal.
S6286AA
Back inlet spreader.

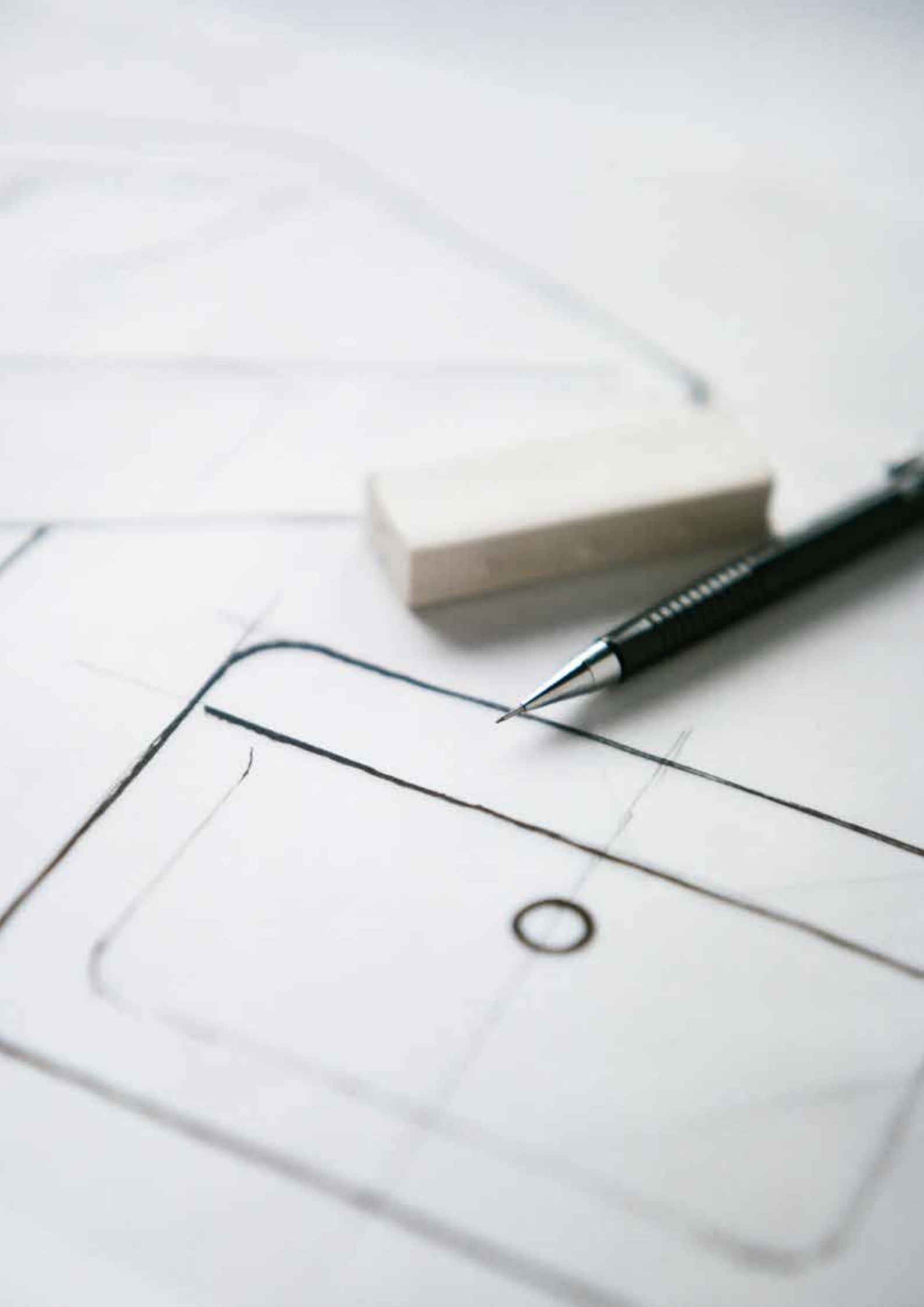


S632101
Aridian waterless urinal.
S612001
Vitreous china division.



S611901
CONTOUR 21
HygenIQ urinal.
S6286AA
Back inlet spreader.
A4854AA
Sensorflow21
Urinal flush valve
– panel mounted.





Technical Information

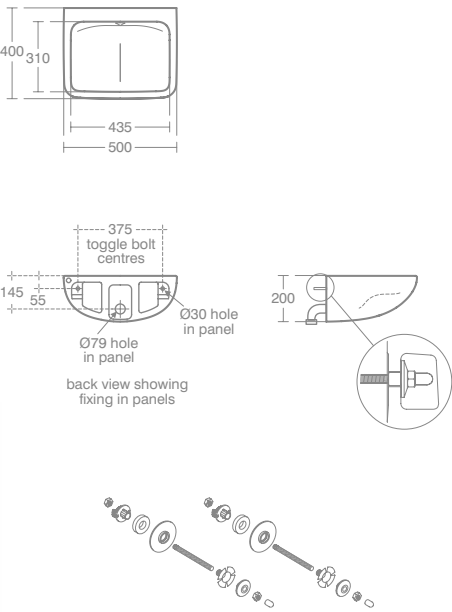
Product Drawings, Specifications and Guarantees

Contents

Hospital Ceramics	68
Hospital Brassware	74

Hospital Ceramics

- S0430HY**
CONTOUR 21+
50cm back outlet basin.
Hospital pattern washbasin for clinical use
- Basin, for use with wall mounted mixer
 - Patented anti splash “Hydrofin”
 - SmartGuard+ antimicrobial glaze
 - Concealed supply and waste with improved drainage minimises bacteria traps
 - Non reservoir basin improves hygiene.



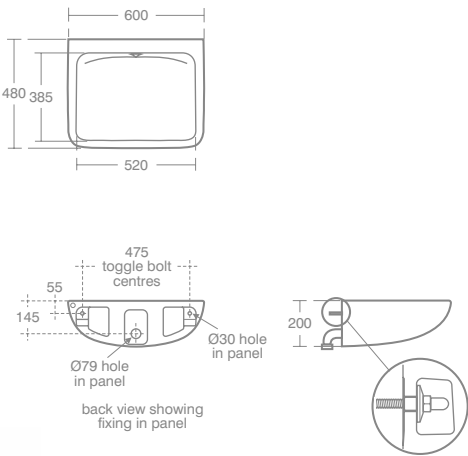
- S038867**
CONTOUR 21+
Basin fixation set.

- S038667**
CONTOUR 21+
Waste pack with Smart Guard
for wall mounted basin.

SmartGuard*



- S0444HY**
CONTOUR 21+
60cm back outlet basin.
Hospital pattern washbasin
for clinical use
- Large basin, for use with wall mounted mixer
 - Patented anti splash “Hydrofin”
 - SmartGuard+ antimicrobial glaze
 - Concealed supply and waste with improved drainage minimises bacteria traps
 - Non reservoir basin improves hygiene.



- S038867**
CONTOUR 21+
Basin fixation set.

- S038667**
CONTOUR 21+
Waste pack with Smart Guard
for wall mounted basin.

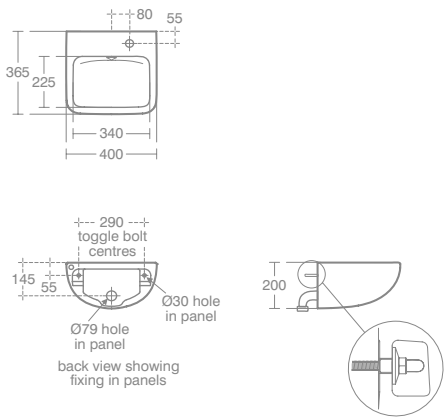
SmartGuard*



- S0435HY**
CONTOUR 21+
40cm back outlet basin
with tap deck, RH.
- General pattern back outlet washbasin with left and right hand tap options
 - SmartGuard+ antimicrobial glaze
 - Small compact size
 - Concealed supply and waste with improved drainage minimises bacteria traps.
 - Unique thermostatic basin mixer with demountable body and detachable spout
 - Smooth easy to clean shape improves hygiene.

- S038867**
CONTOUR 21+
Basin fixation set.

- S038767**
CONTOUR 21+
Waste pack with Smart Guard
for tap Deck Basin.



- S0433HY**
CONTOUR 21+
40cm back outlet basin
with tap deck, LH.

- S038867**
CONTOUR 21+
Basin fixation set.

- S038767**
CONTOUR 21+
Waste pack with Smart Guard
for tap Deck Basin.

RH – right hand LH – left hand

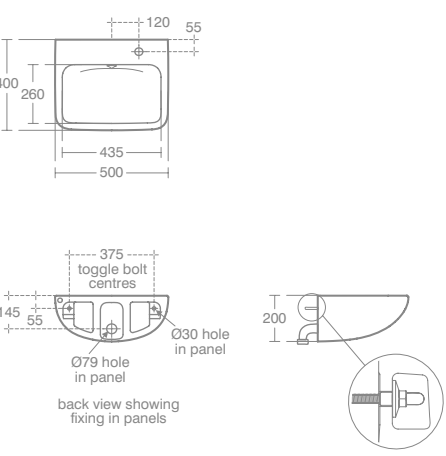
SmartGuard*



- S0432HY**
CONTOUR 21+
50cm back outlet basin
with tap deck, RH.
- General pattern back outlet with left and right hand tap options
 - SmartGuard+ antimicrobial glaze
 - Small compact size
 - Concealed supply and waste with improved drainage minimises bacteria traps
 - Unique thermostatic basin mixer with demountable body and detachable spout
 - Smooth easy to clean shape improves hygiene.

- S038867**
CONTOUR 21+
Basin fixation set.

- S038767**
CONTOUR 21+
Waste pack with Smart Guard
for tap Deck Basin.



- S0431HY**
CONTOUR 21+
50cm back outlet basin
with tap deck, LH.

- S038867**
CONTOUR 21+
Basin fixation set.

- S038767**
CONTOUR 21+
Waste pack with Smart Guard
for tap Deck Basin.

RH – right hand LH – left hand

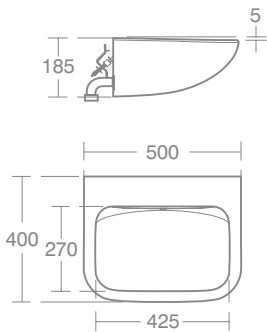
SmartGuard*



Hospital Ceramics

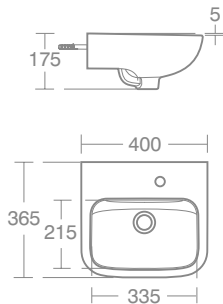
S215401
CONTOUR 21
50cm basin with back outlet,
no overflow or tapholes.

- S215501**
CONTOUR 21
60cm basin with back outlet,
no overflow or tapholes.
- Hospital pattern washbasin for clinical use
 - Large basin, for use with wall mounted mixer
 - Concealed supply and waste minimise bacteria traps
 - Non reservoir basin improves hygiene.



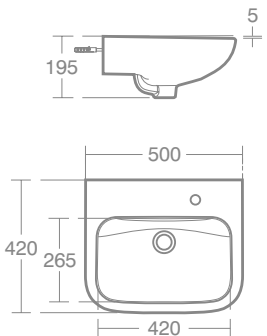
S231401
Portman21
40cm basin, no overflow or chain
hole – one right hand taphole.

- General pattern washbasin for non-clinical use
- Small compact size
- Exposed supply and waste for easy maintenance
- Smooth easy to clean shape, improves hygiene.



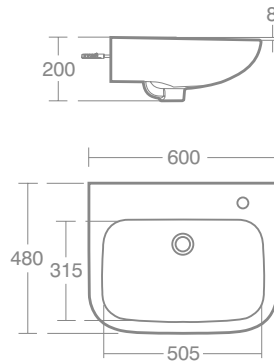
S225401
Portman21
50cm basin, no overflow or chain
hole – one right hand taphole.

- General pattern washbasin for non-clinical use
- Medium size for extra washing capacity
- Exposed supply and waste for easy maintenance
- Smooth easy to clean shape.



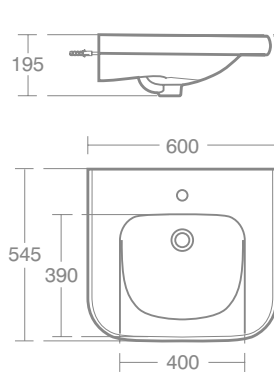
S229801
Portman21
60cm basin, no overflow or chain
hole – one right hand taphole.

- General pattern washbasin for non-clinical use
- Medium size for extra washing capacity
- Exposed supply and waste for easy maintenance
- Smooth easy to clean shape.



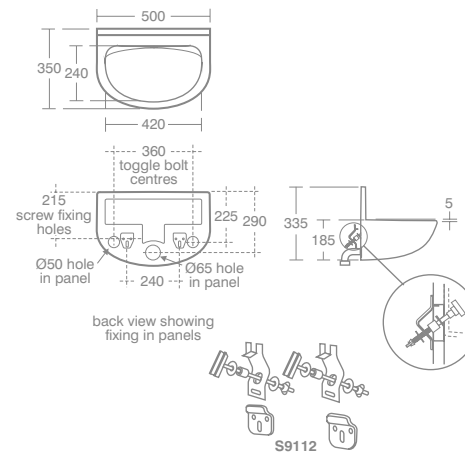
S216801
CONTOUR 21
60cm accessible basin –
one centre taphole.

- General pattern washbasin for non-clinical use
- Unique design allows use from wheelchair
- Exposed supply and waste for easy maintenance
- Reservoir design for easy use.



S214401
CONTOUR 21
back outlet 50cm
with upstand basin.

- Hospital pattern back outlet washbasin for clinical use
- Short projection basin with upstand, ideal where space is limited (e.g. corridors) for use with wall.



Hospital Ceramics

S0443HY

CONTOUR 21+

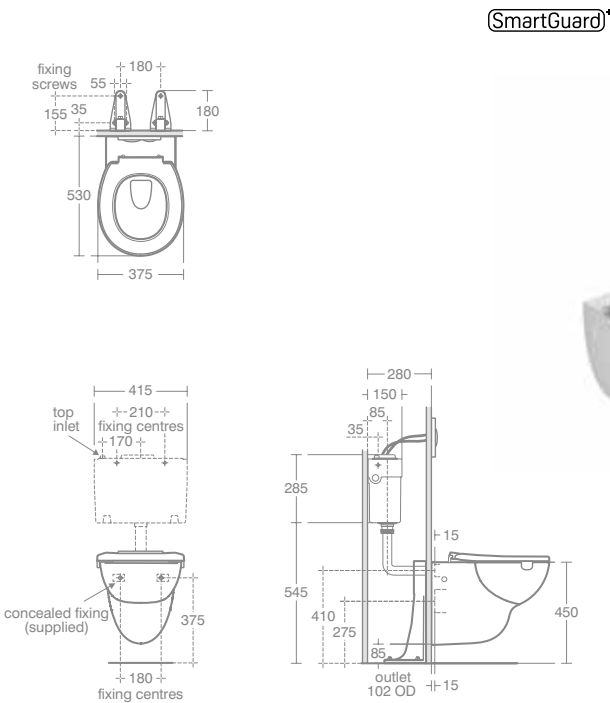
Rimless wall hung WC pan
– standard projection.

- Hospital pattern WC for clinical use
- SmartGuard antimicrobial glaze
- Improved Rimless technology
- Wall hung for easier floor cleaning with hidden fixation
- 4.5 litre water saving flush
- WC seat without lid in range of contrasting colours
- Seat retainers keep seat secure when transferring to WC
- SmartGuard+ antimicrobial glaze.

S406636

CONTOUR 21

Seat no cover with retaining buffers.



SmartGuard*

S0441HY

CONTOUR 21+

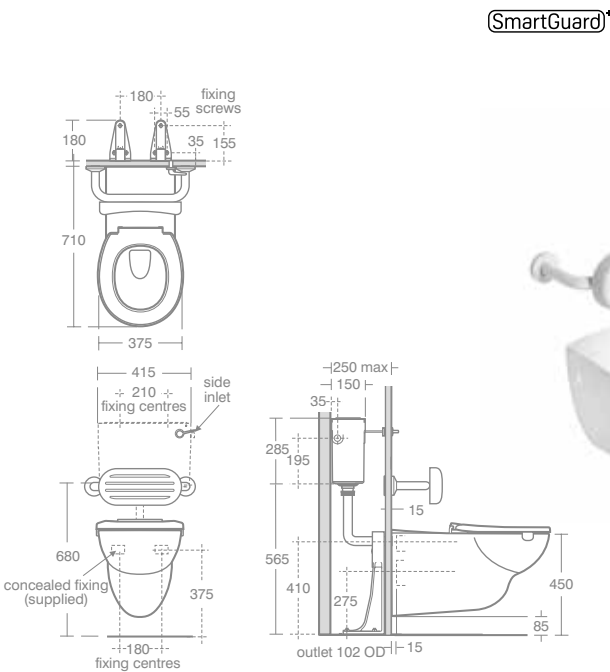
Rimless wall hung WC pan
70cm projection.

- Hospital pattern WC for clinical use
- SmartGuard antimicrobial glaze
- Wall hung for easier floor cleaning with hidden fixation
- Improved Rimless technology
- Padded back support for improved comfort
- Easier transfer from wheelchair to WC
- 4.5 litre water saving flush
- WC seat without lid in range of contrasting colours
- Seat retainers keep seat secure when transferring to WC
- SmartGuard+ antimicrobial glaze.

S406636

CONTOUR 21

Seat no cover with retaining buffers.



SmartGuard*

S0440HY

CONTOUR 21

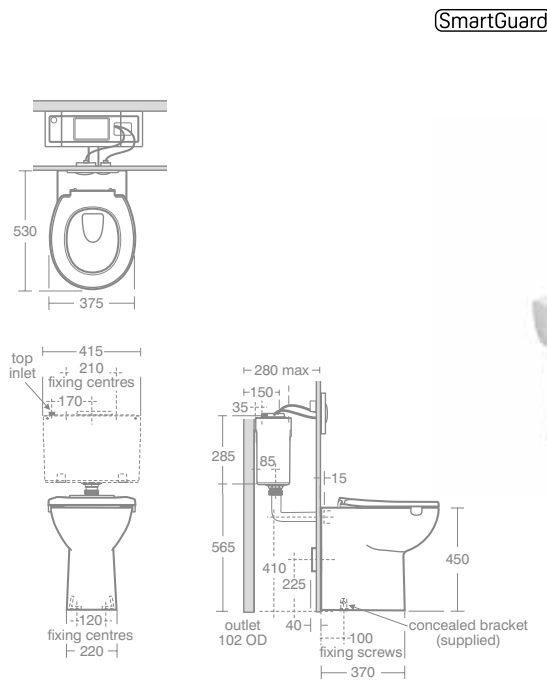
Raised height rimless back-to-wall
WC pan – standard projection.

- Hospital pattern WC for clinical use
- Rimless design eliminates potential bacteria hot spot
- Floor mounted, 46cm high for disabled users
- Concealed cistern minimises projection into the room
- 4.5 litre water saving flush
- SmartGuard+ antimicrobial glaze.

S406636

CONTOUR 21

Seat no cover with retaining buffers.



SmartGuard*

S0437HY

CONTOUR 21+

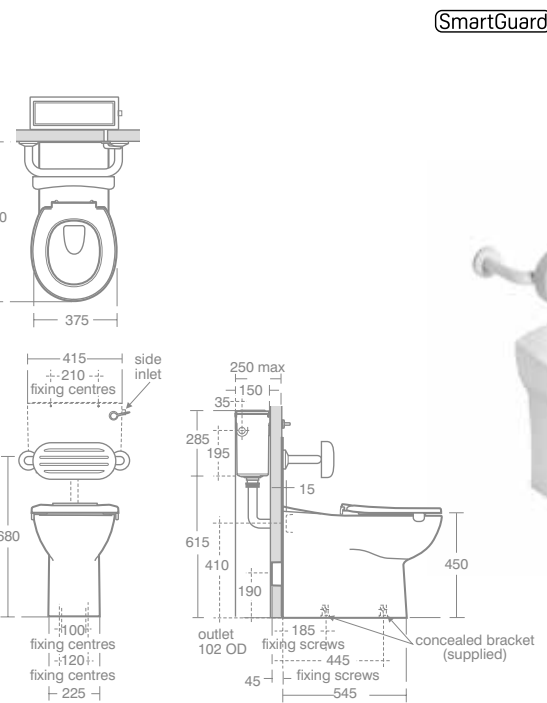
raised height rimless back to
wall pan – 70cm projection.

- Hospital pattern WC for clinical use
- SmartGuard antimicrobial glaze
- Improved rimless technology
- Floor mounted, 46cm high for disabled users
- Easier transfer from wheelchair to WC
- 4.5 litre water saving flush
- WC seat without lid in range of contrasting colours
- Seat retainers keep seat secure when transferring to WC
- SmartGuard+ antimicrobial glaze.

S406636

CONTOUR 21

seat no cover with retaining buffers.



SmartGuard*

Hospital Brassware

A6682AA

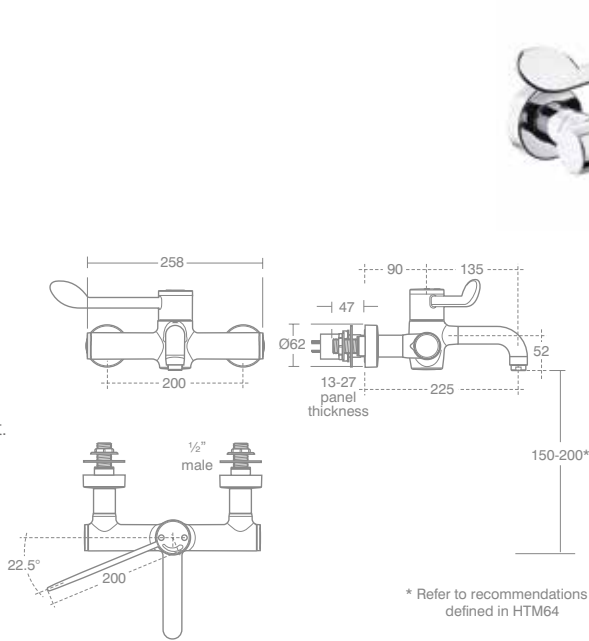
MARKWIK 21+
Demountable panel mounted
mixer with detachable spout.

- Suitable for 15mm copper
- Single lever operation with large easy to use lever
- 200mm tap centres
- Easy access for maintenance
- No need to remove panels
- Horizontal spout
- Cleansing feature
- Insulate technology keeps fittings at body temperature and therefore safe
- With Bioguard Anti-Pseudomonas outlet.

A6735AA

Fixed spout option.

WRAS NO. 1704021



A6684AA

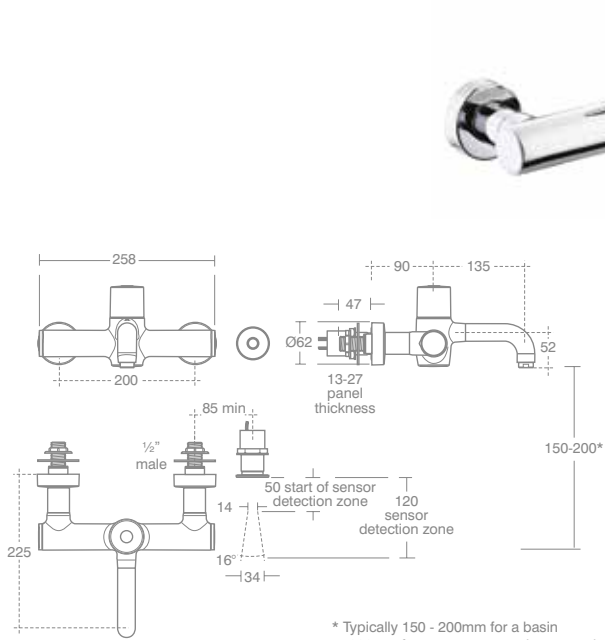
MARKWIK 21 +
Demountable panel mounted
mixer with time flow sensor
and detachable spout.

- Suitable for 15mm copper
- Sensor operated means no hand touch
- 200mm tap centres
- Easy access for maintenance
- No need to remove panels
- Horizontal spout
- Cleansing feature
- Insulate technology keeps fittings at body temperature and therefore safe
- With Bioguard Anti-Pseudomonas outlet.

A6737AA

Fixed spout option.

WRAS NO. 1705015

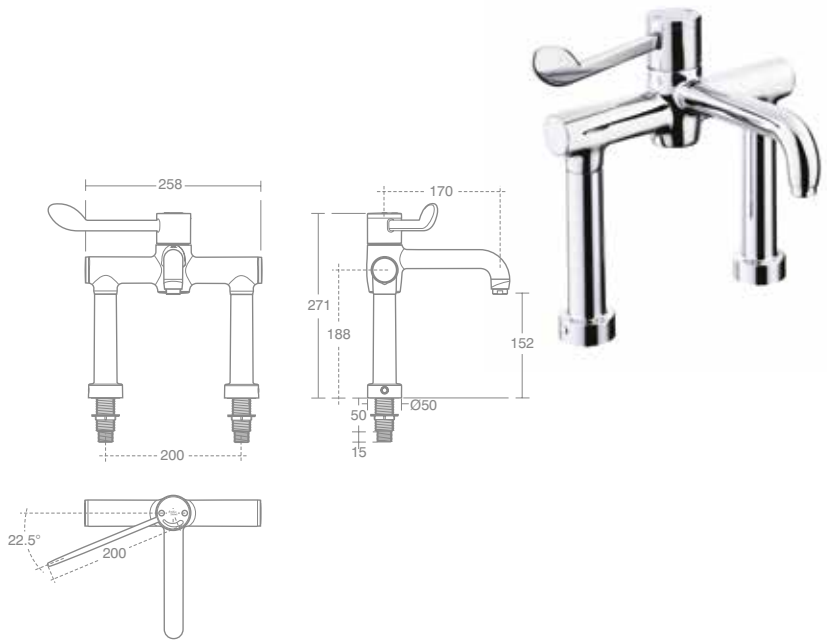


A6734AA

MARKWIK 21+
Deck mounted sequential
thermostatic mixer.

- Suitable for 15mm copper
- Can be easily retro fitted on existing basins and sinks with 200mm tap centres
- Easy access for maintenance
- No need to remove panels
- Horizontal spout
- Cleansing feature
- Insulate technology keeps fittings at body temperature and therefore safe
- With Bioguard Anti-Pseudomonas outlet.

WRAS NO. 1704022



A6696AA

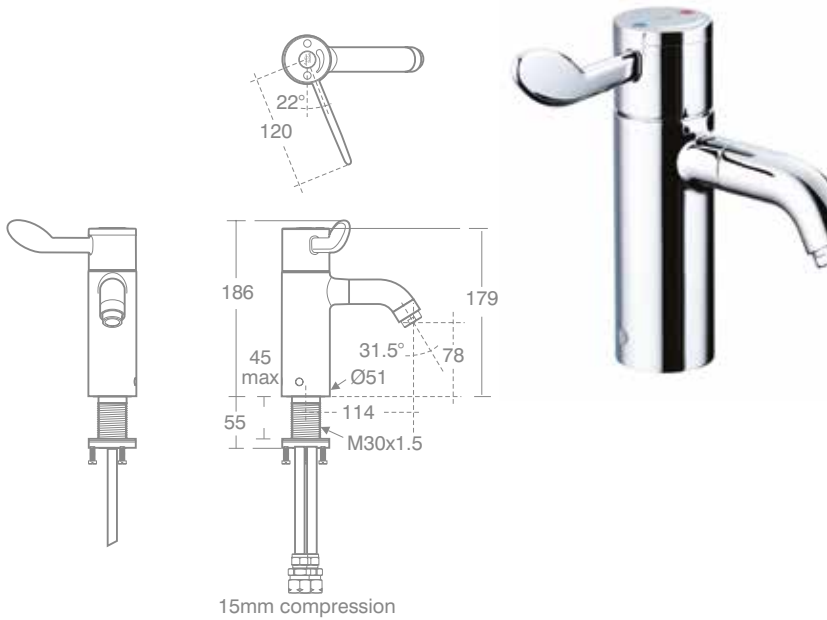
MARKWIK 21+
Thermostatic basin mixer with
demountable body, detachable
spout and copper inlets.

- Basin mixer with extended easy use lever particularly suitable for closed fist operation
- Suitable for healthcare and less abled bathrooms
- HTM 64 TP6
- Integral thermostat set at 41°C
- Sequential operation. To ensure system hygiene and user safety the water is always drawn from first cold and then the hot supply.

A6791NU

MARKWIK 21+
Fixing kit for use in conjunction
with back outlet basin.

WRAS NO. 1705011



Hospital Brassware

A6252AA

100 Reach Spout

For use in conjunction with Contour 21 clinical wall mounted upstand basin (S214401)



A6250AA

135 Reach Spout

For use in conjunction with Contour 21, 50 and 60cm clinical wall mounted washbasins (S215401 and S215501)



A6255AA

Inlet Protection Caps



F960847AA

Armitage BioGuard Outlet (retro-fit)



A6898NU

Purging kit for 2 hole thermostatic mixers

A6899NU

Purging kit for panel mounted thermostatic mixers



S8265AA

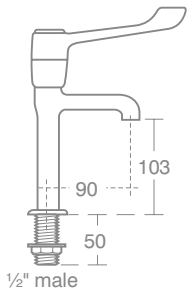
MARKWIK

High neck sink pillar taps.

- Deck mounted chrome plated taps with 15cm levers
- Suitable for closed fist operation.



WRAS NO. 1305006



S8270AA

MARKWIK

Lever action bib taps, including wall mounts and extensions.

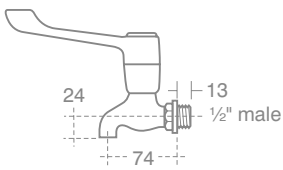
- Wall mounted chrome plated taps with 15cm levers
- Suitable for closed fist operation
- HTM 64 TB H1.

B1686AA

Wall mounts not included.



WRAS NO. 1611024

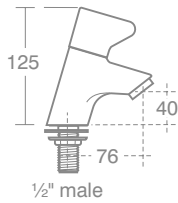


Hospital Brassware

B8262AA

Piccolo 21
Pillar taps.

- Suitable for 15mm copper.
- Deck mounted chrome plated brass taps with anti vandal indices
- Particularly suitable for contract use
- Suitable for closed fist operation
- HTM 64 TP5.

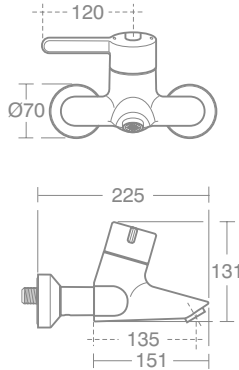


 WRAS NO. 1611023

A4135AA

CONTOUR 21
Wall mounted thermostatic bath mixer.

- Single easy turn lever
- Sequential operation
- To ensure system hygiene and user safety the water is always drawn from first cold and then the hot supply
- 150mm tap centres
- Built in thermostat.



 WRAS NO. 1703007

A4846AA

Sensorflow Spout 150 Compact.

- Features an automatic purge facility (duty flush) where the tap can be set to run for an extended period during cleaning or maintenance. A run time of between 1 and 120 minutes will clear extensive pipe runs and outlets
- Available with a remote control for easy adjustment and activation of temporary flow stop for cleaning
- Downwards facing sensor to help eliminate false activation
- 3.7 lpm outlett.

 WRAS NO. 1212015

A4846AA

150 mains option.

A4847AA

150 link option.

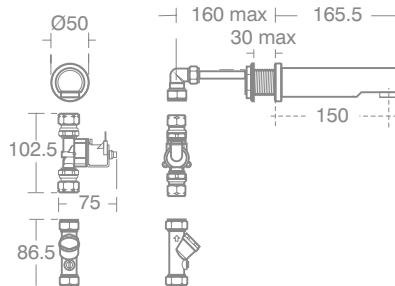
A4849AA

230 mains option.

A4850AA

230 link option.

- Colour options
- Chromium Plated AA
 - Brushed Steel GN.

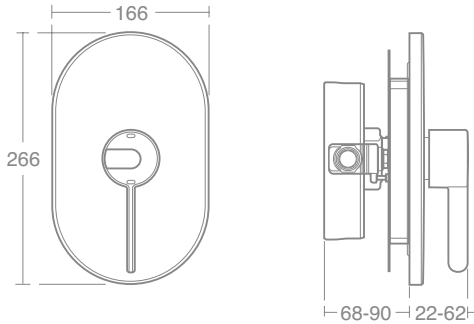


A4129AA

CONTOUR 21

Built in thermostatic sequential shower.

- Suitable for 15mm copper
- Built in sequential shower
- Built in thermostat
- 120mm long lever suitable for closed fist operation
- Safety temperature stop
- Sequential operation
- To ensure system hygiene and user safety the water is always drawn from first cold and then the hot supply
- TMV3 approved.



 WRAS NO. 1604039



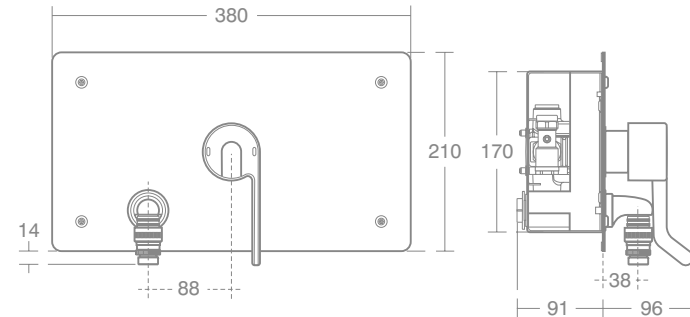
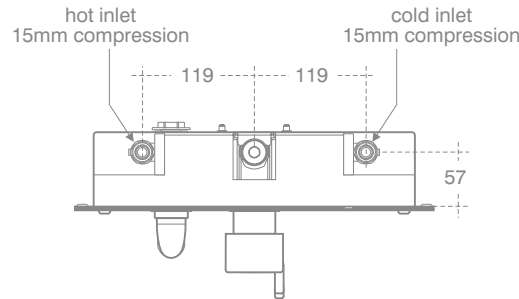
A4314MY

Thermostatic shower and mounting box.

- Stainless Steel
- TMV3 approved.



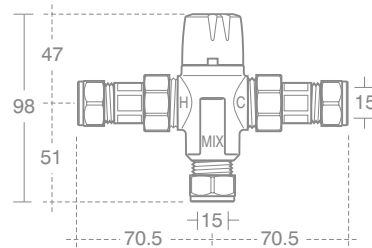
Includes TMV3 approved valve A4129AA



Hospital Brassware

A5900AA

- Thermostatic mixing valve.
- Suitable for 15mm copper
 - Automatic shut off if cold supply fails
 - Multi-point usage
 - Precise temperature control
 - Anti tamper shield
 - TMV3 scheme approved
 - Suitable for 2 taphole basins.



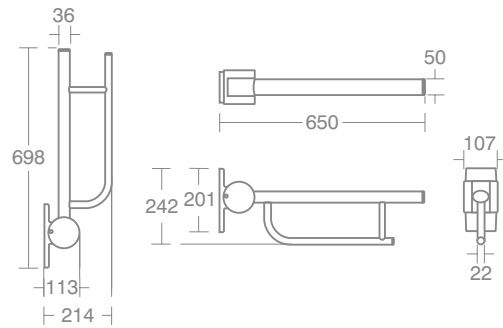
S636136

CONTOUR 21
65cm drop down grab rail in blue.

- Robust support that folds up and out of the way
- Concealed fixings for improved hygiene and security
- Slip resistant contact surfaces
- Capable of supporting 200kg
- Optional toilet roll holder.

Colour options

- Blue 36
- Grey LJ
- Charcoal RN
- White AC.



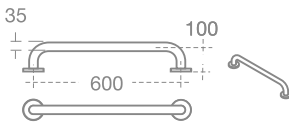
S645436

CONTOUR 21
60cm straight grab rail in blue.

Also available 45 cm straight grab rail.

Colour options

- Blue 36
- Grey LJ
- Charcoal RN
- White AC.



S6481AC

CONTOUR 21
Back support rail for 70 cm projection.

S688467

CONTOUR 21
Cushion for back support.

- Back rest for use with back-to-wall and wall hung WCs
- Fixed on polyester coated aluminium grab rail
- Padded one-piece backrest.



S406636

CONTOUR 21
Seat no cover with retaining buffers.

- WC seat without lid in range of contrasting colours
- Seat retainers keep seat secure when transferring to WC.

Colour options

- Blue 36
- Grey LJ
- Charcoal RN
- White 01.



Guarantee

Lifetime

All ceramic products

5 years

On taps, mixers, toilet seats, stainless steel and cistern fittings

Our confidence in the quality and reliability of Armitage Shanks products enables us to guarantee many of them for a lifetime.

Our guarantee is offered on all products that have been used in the manner for which they were intended, and does not apply to any products that have been misused or abused in any way. Products must be installed and cared for in line with our fixing instructions and local water byelaws. In the unlikely event the product fails within the guarantee period, we offer a free replacement or replacement part (or nearest equivalent). We also reserve the right to repair the product. Liability is limited to individual products and does not cover consequential loss or damage on installation.

1. All ceramic products are guaranteed for a lifetime.
2. Showers, bath panels, furniture, mixers and taps, WC suite seats, stainless steel units and cistern fittings are guaranteed for five years from date of purchase. (Cistern seals are not included).
3. Parts (including push button flush valves) are guaranteed for five years and will be replaced if found to be faulty.
4. Cistern diaphragms, seals and shower seals are not included. Replacements may be purchased through our parts supply service.

Conditions

1. This guarantee applies only to products purchased and installed in the United Kingdom or the Republic of Ireland.
2. Proof of purchase is required in the event of a claim.
3. Provision of the barcode/serial number will be required to enable product identification.
4. We must be given the opportunity to inspect the product, if we request to do so. The product should not be removed or destroyed before inspection without our consent. We may request photographic evidence in any investigation.
5. The product must have been installed, used and cared for in accordance with our instructions for installation and care. In addition, the products must have been installed in accordance with good plumbing practice.
6. Where our on-site investigation reveals that the reported fault was not due to a manufacturing or materials defect a callout charge will be applied.
7. Where we are satisfied that a defect has arisen because of faulty manufacturing or materials we will, at our option, repair or replace the product free of charge to you. If we choose to replace the product and we no longer manufacture the identical model we will replace it with the nearest equivalent in our then current range.
8. This guarantee does not apply to general wear and tear or where, in our opinion, the product has been modified, misused, neglected or wilfully or accidentally damaged.
9. This guarantee does not cover consequential damages or loss.
10. This guarantee does not cover damage and or malfunction caused by inappropriate cleaning (please refer to our recommended care and maintenance guidelines).
11. Mildew build up, the effects of lime scale and corrosion are not covered under this guarantee.
12. Guarantee is not transferable in cases where product is reinstalled in subsequent locations
13. Spare parts (excluding cistern diaphragms and seals) are subject to normal wear and tear and covered on all products for 2 years from installation. Spare parts are available for purchase through our parts supply service.
14. This guarantee does not affect your statutory rights.

April 2017

Armitage Shanks pursues a policy of continuing improvement in design and performance of its products. The right is therefore reserved to vary the specifications without notice. Products can be subject to tolerances due to manufacturing processes. Colour reproduction is as accurate as possible within the limitations of the printing process. All measurements are in millimetres and are approximate.

A division of Ideal Standard [UK] Limited

© Armitage Shanks

P1873(1) 07/17

For further information
on any products;
please call
0870 122 8822
or visit
www.armitage-shanks.co.uk

The Armitage Shanks website
provides links to our full technical
on line catalogue – the UK's largest
collection of bathroom and washroom
products for specification. Log on to
download detailed product drawings,
BIM drawings and images or create
your own specification using our
specification system.

Technical helpline
0870 122 8822

*Armitage
Shanks*

Armitage Shanks
Armitage
Rugeley
Staffordshire
WS15 4BT

Tel 01543 490253

www.armitage-shanks.co.uk

*Armitage
Shanks*