

THE CERAFINE D AND O COLLECTIONS

A GUIDE FOR SPECIFIERS



Ideal Standard

BEAUTIFUL AND
BEAUTIFULLY ENGINEERED

CERAFINE D AND O ARE TWO OF OUR LATEST TAP COLLECTIONS

Both offer stunning looks with
outstanding performance.

The collections feature Ideal
Standard's unique:

FirmaFlow® long-life ceramic
cartridge technology

LightMove® handles for precision
temperature control

SmartShine® finishing for easy care and
maintenance

EasyFix® for simple installation



Both collections include:

- Basin mixers - with or without pop-up wastes
- Mini basin mixers - with or without pop-up wastes
- Dual control bath fillers
- Dual control shower mixers

DURABILITY AND PERFORMANCE WITH FIRMAFLOW®

500,000+
use cycles, twice that
of the industry norm

95°C
heat resistant

10-15 years
of daily use

The basin mixers in the Cerafine D and O collections are equipped with FirmaFlow® cartridges. This is our latest cartridge development and continues to set the standard for brassware performance, quality and comfort.

The cartridge has a lifetime of 500,000 operating cycles – that's more than 2x the requirement to meet WRAS standards.

That equates to 10 to 15 years of regular, daily use. This means home owners can enjoy maintenance free performance for more than twice as long as the industry norm.

Superior pinpoint precision control of water temperature.

The inclusion of LightMove® technology on both basin mixer ranges, allows finer temperature adjustment between 34°C and 42°C, again ensuring user comfort and safety. In addition the in-built hot water limiter makes scalding a thing of the past.





DESIGN AND ERGONOMICS

Smoother surfaces, reduced spout radius, larger comfort areas, easier to clean.

Each Cerafine tap has been crafted with a larger comfort area beneath the aerator, improving ergonomic performance.

This makes every tap in the collection easier to operate while SmartShine® finishing makes cleaning easier too.



Efficiency with comfort

All Cerafine basin mixers are equipped with a 5 l/min aerator that not only limits the maximum water flow for more economical use, but also introduces air into the waterflow for a softer, foamy feel that enhances user comfort.



EASYFIX® MAKES INSTALLATION SIMPLE WITH ITS RELIABILITY, SO REDUCING MAINTENANCE.

Every Cerafine basin mixer comes with our EasyFix® system, which cuts installation time by 30%.

A decorative escutcheon fixed to the basin mixer bodies also allows for easy mounting and helping to reduce installation time.



CERAFINE D COLLECTION

The soft geometric design of Cerafine D is on trend and makes it the ideal choice for use with both square and round styled ceramic suites.



EasyFix®
installation



Water saving



Lightmove®
technology



Smartshine®
finishing



Mini basin mixer
with or without pop-up waste



Basin mixer
with or without pop-up waste



Dual control hole bath filler



Dual control bath shower mixer
with shower set

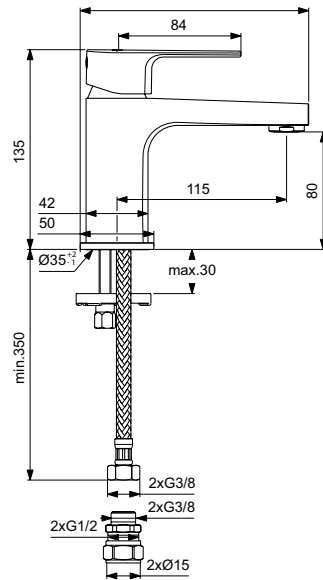
CERAFINE D SPECIFICATION DETAILS

CERAFINE D

SINGLE LEVER MINI BASIN MIXER

Single lever mini basin mixer
ISI Code: BC718AA

FirmaFlow® ceramic disc cartridge
EasyFix® system
Slim aerator – 5 l/min
Supplied with flexible hoses G3/8 PEX
Connections for 15mm copper pipe
SmartShine® Finishing
LightMove® cartridge
Comfort area: Height 80mm



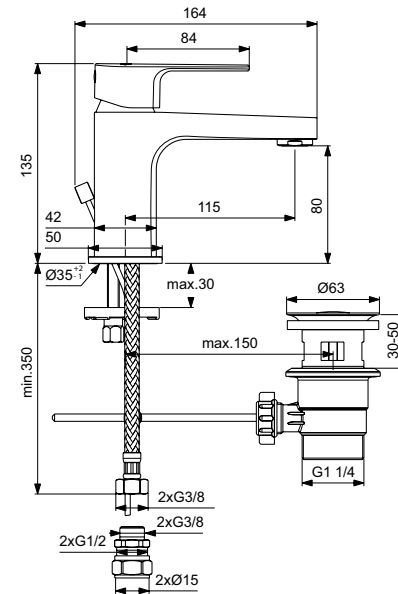
See more information on BC718AA

CERAFINE D

SINGLE LEVER MINI BASIN MIXER WITH POP-UP WASTE

Single lever mini basin mixer with pop-up waste
ISI Code: BC719AA

Pop-up waste
FirmaFlow® ceramic disc cartridge
EasyFix® system
Slim aerator – 5 l/min
Supplied with flexible hoses G3/8 PEX
Connections for 15mm copper pipe
SmartShine® Finishing
LightMove® cartridge
Comfort area: Height 80mm



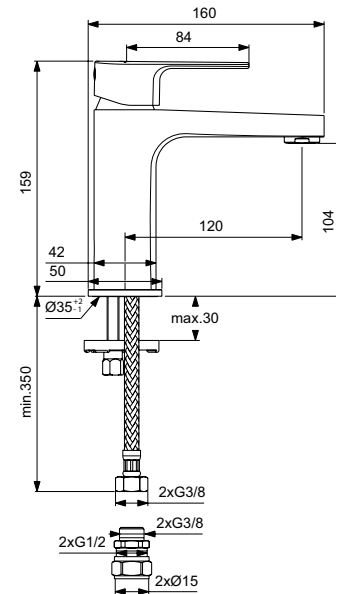
See more information on BC719AA

CERAFINE D

SINGLE LEVER BASIN MIXER

Single lever basin mixer
ISI Code: BC720AA

FirmaFlow® ceramic disc cartridge
EasyFix® system
Slim aerator – 5 l/min
Supplied with flexible hoses G3/8 PEX
Connections for 15mm copper pipe
SmartShine® Finishing
LightMove® cartridge
Comfort area: Height 105mm



See more information on BC720AA

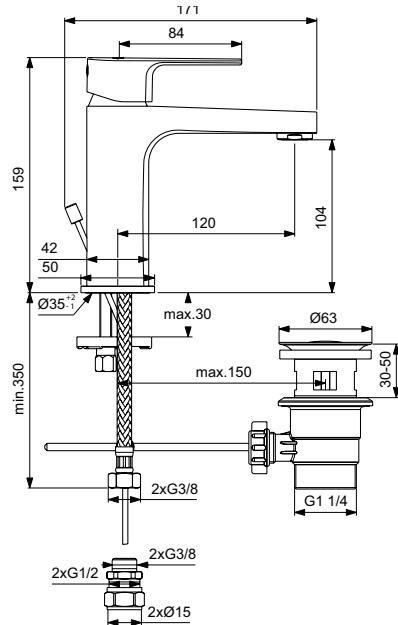
CERAFINE D SPECIFICATION DETAILS

CERAFINE D

SINGLE LEVER BASIN MIXER
WITH POP-UP WASTE

Single lever basin mixer with pop-up waste
ISI Code: BC721AA

Pop-up waste
FirmaFlow® ceramic disc cartridge
EasyFix® system
Slim aerator – 5 l/min
Supplied with flexible hoses G3/8 PEX
Connections for 15mm copper pipe
SmartShine® Finishing
LightMove® cartridge
Comfort area: Height 105mm



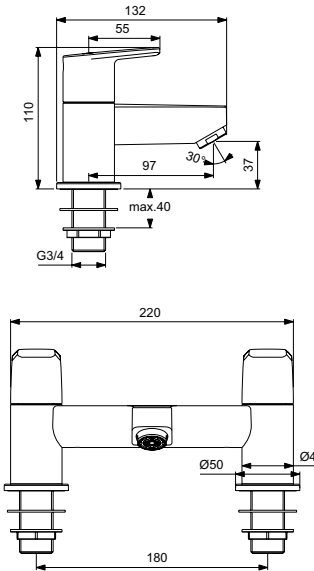
See more information on BC721AA

CERAFINE D

DUAL CONTROL BATH FILLER

Dual control bath filler
ISI Code: BC694AA

SmartShine®
Finishing



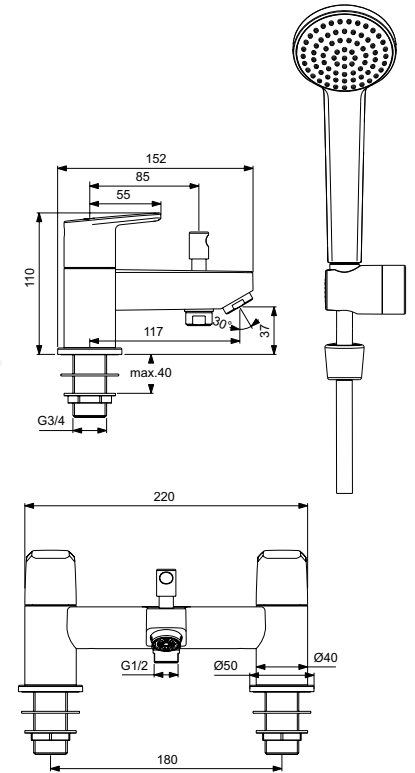
See more information on BC694AA

CERAFINE D

DUAL CONTROL BATH SHOWER MIXER
WITH SHOWER SET

Dual control bath shower mixer with shower set
ISI Code: BC695AA

SmartShine®
Finishing
Includes Idealrain S1 shower set



See more information on BC695AA



EasyFix®
installation



Water saving



Lightmove®
technology



Smartshine®
finishing

CERAFINE O COLLECTION

Distinguished by its slim, elegant cylindrical body, Cerafine O is perfect for use in a wide variety of contemporary bathroom settings.



Mini basin mixer
with or without pop-up waste



Basin mixer
with or without pop-up waste



Dual control hole bath filler



Dual control bath shower mixer
with shower set

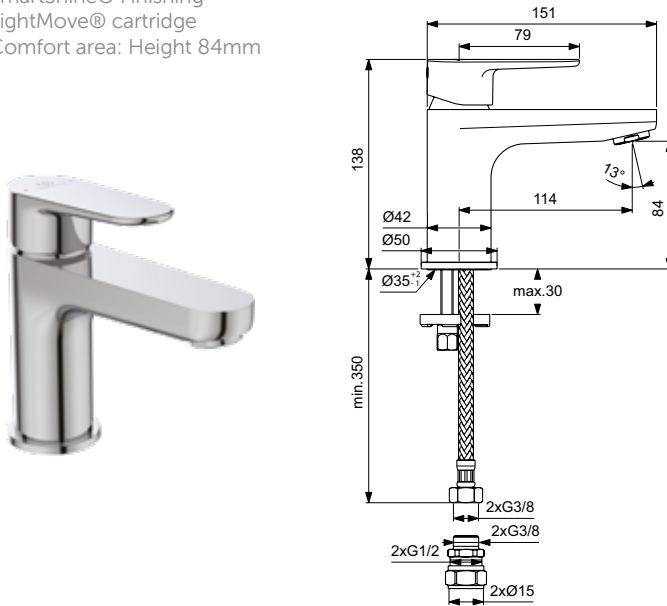
CERAFINE O SPECIFICATION DETAILS

CERAFINE O

SINGLE LEVER MINI BASIN MIXER

Single lever mini basin mixer
ISI Code: BC722AA

FirmaFlow® ceramic disc cartridge
EasyFix® system
Slim aerator – 5 l/min
Supplied with flexible hoses G3/8 PEX
Connections for 15mm copper pipe
SmartShine® Finishing
LightMove® cartridge
Comfort area: Height 84mm



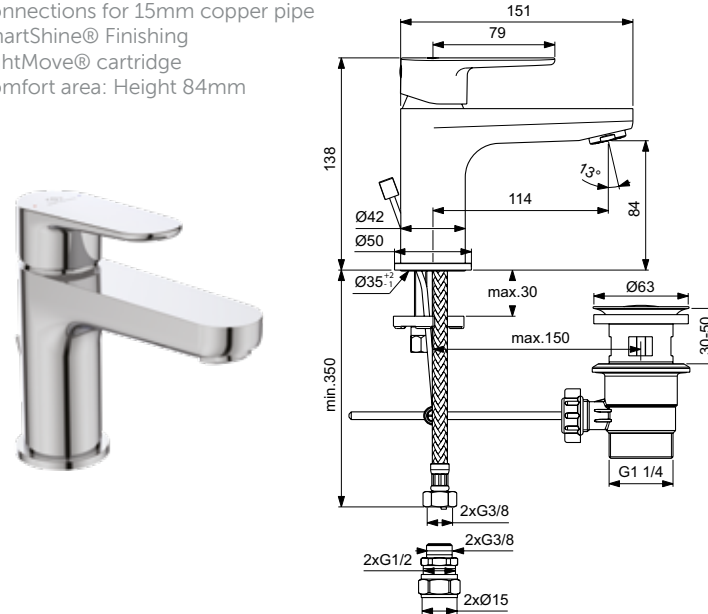
See more information on BC722AA

CERAFINE O

SINGLE LEVER MINI BASIN MIXER WITH POP-UP WASTE

Single lever mini basin mixer with pop-up waste
ISI Code: BC723AA

Pop-up waste
FirmaFlow® ceramic disc cartridge
EasyFix® system
Slim aerator – 5 l/min
Supplied with flexible hoses G3/8 PEX
Connections for 15mm copper pipe
SmartShine® Finishing
LightMove® cartridge
Comfort area: Height 84mm



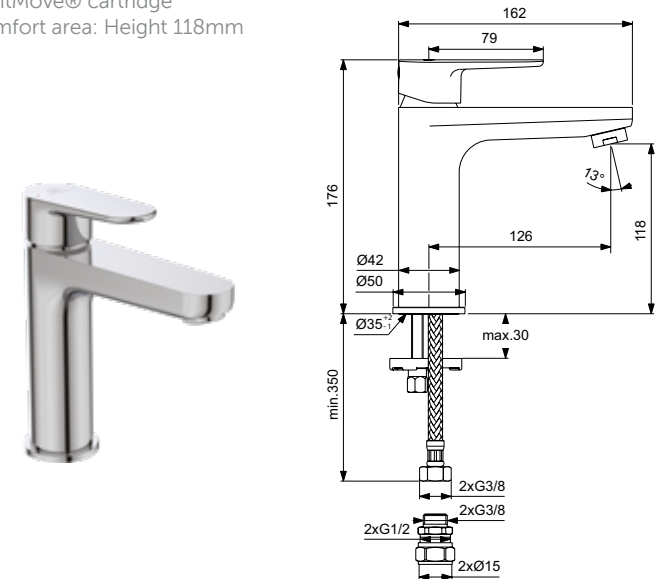
See more information on BC723AA

CERAFINE O

SINGLE LEVER BASIN MIXER

Single lever basin mixer
ISI Code: BC724AA

FirmaFlow® ceramic disc cartridge
EasyFix® system
Slim aerator – 5 l/min
Supplied with flexible hoses G3/8 PEX
Connections for 15mm copper pipe
SmartShine® Finishing
LightMove® cartridge
Comfort area: Height 118mm



See more information on BC724AA

Ideal Standard (UK) Ltd
The Bathroom Works
National Avenue
Kingston Upon Hull
HU5 4HS
UK

idealspec.co.uk



Ideal Standard