



**DOC M
COMPLIANCE
MADE EASY**

**ONLY
WE HAVE
*this*ability**

*Armitage
Shanks*

Find your complete Doc M solution

Doc M isn't just another part of the Building Regulations. It's about making buildings more accessible to everyone. And about helping people live their lives more easily.

With washrooms, showers and toilets, that usually means 'functional'. But at Armitage Shanks, we take a different approach.

With our packs, you comply.

We believe everyone should be treated equally. So we've created a wide variety of Doc M packs and fittings with the practicality you need to comply with the regulations, the style to co-ordinate with any of our bathroom ranges and the unrivalled quality, service and heritage you'd expect from us. You'll even find luxury options suited to the most prestigious projects.

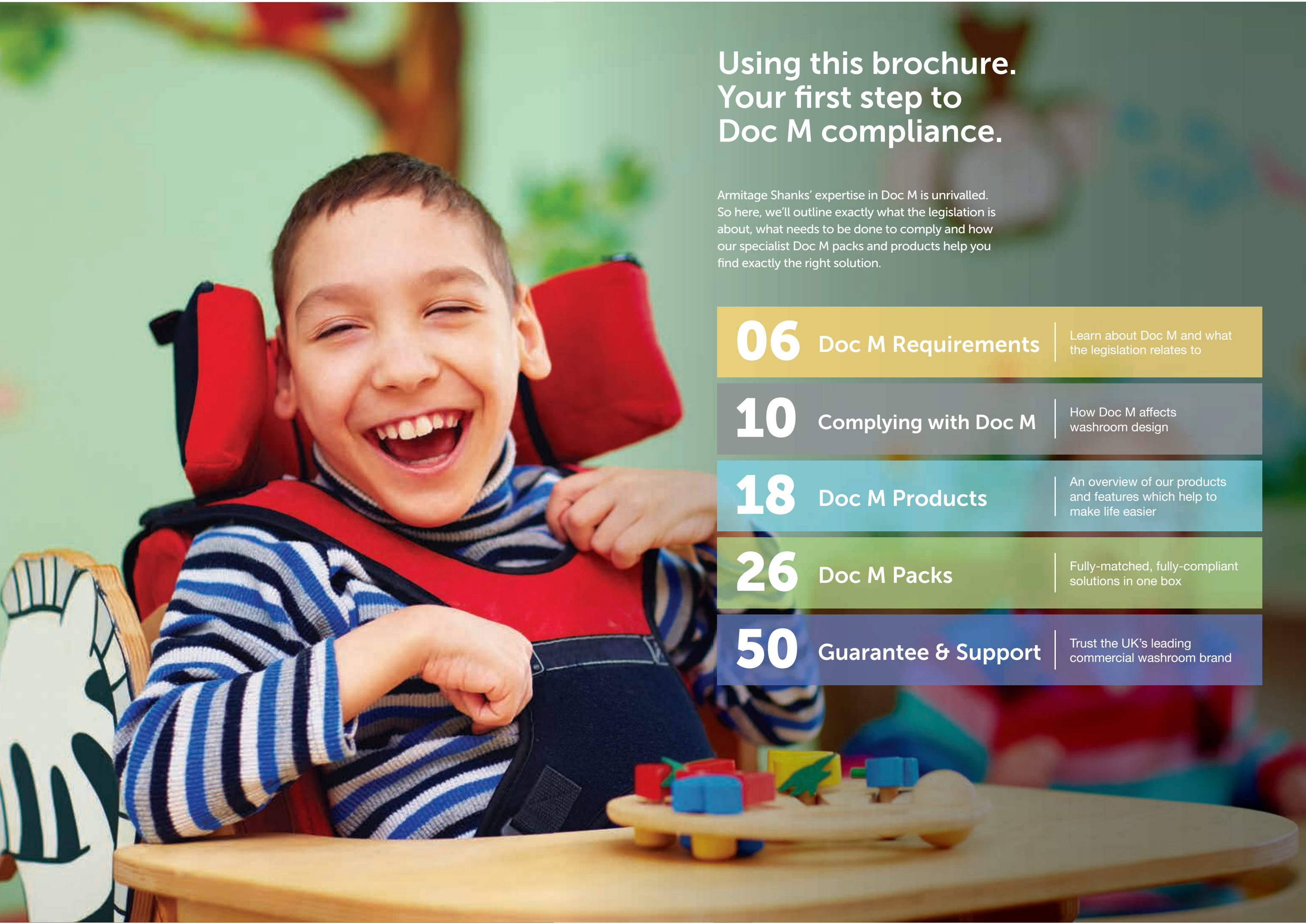
Our experts have made sure each design exceeds every standard and meets every approval, so you can be sure of 100% compliance. Just as you can be sure they'll be on-hand to help you at every stage.

This brochure will show you our latest ranges specifically for Doc M – the most trusted and installed Doc M packs in the UK and Ireland.

As well as how, with Armitage Shanks, everyone's lives can be made easier.

*Armitage
Shanks*





Using this brochure. Your first step to Doc M compliance.

Armitage Shanks' expertise in Doc M is unrivalled. So here, we'll outline exactly what the legislation is about, what needs to be done to comply and how our specialist Doc M packs and products help you find exactly the right solution.

- | | | |
|-----------|--------------------------------|---|
| 06 | Doc M Requirements | Learn about Doc M and what the legislation relates to |
| 10 | Complying with Doc M | How Doc M affects washroom design |
| 18 | Doc M Products | An overview of our products and features which help to make life easier |
| 26 | Doc M Packs | Fully-matched, fully-compliant solutions in one box |
| 50 | Guarantee & Support | Trust the UK's leading commercial washroom brand |

What is Doc M?

Document M (or Doc M) of the Building Regulations is one of a number of documents providing practical guidance for building situations. Doc M covers access to and use of buildings particularly with regards to disabled people.

A requirement of the 2010 Equality Act is to 'make any reasonable adjustment to any physical feature which might put a disabled person at a substantial disadvantage compared to a non-disabled person.'

The recommendations laid out in Doc M for washrooms provides practical guidance to help you meet many of the needs of the Equality Act.



What is required in a Doc M washroom, toilet or shower facility?

In essence, Doc M means designers need to ‘make any reasonable adjustment to any physical feature which might put a disabled person at a substantial disadvantage compared to a non-disabled person’.

So, if you are offering or required to offer toilet facilities to your customers, clients or employees, you must make reasonable provision for everyone of all levels of ability including wheelchair users.

Overall Requirements

Public and commercial properties vary in purpose, design and size. Doc M ensures that washroom accommodation is suitable for all those who use them, no matter what the nature of the building.

Doc M guidelines should be used alongside the Scale of Provision, BS 6465, applicable to each individual building type, as disabled toilets may be counted as part of its overall WC provision.

Specifiers should also refer to BS 8300-2 2018 which works in conjunction with Doc M. It provides detailed guidance on the needs of disabled people in the built environment and describes the size, layout and fittings appropriate to disabled toilet facilities.

Single Toilet Facilities

Page 12

Where you only have one toilet facility this needs to be a large unisex wheelchair accessible washroom.

Multiple Toilets Facilities

Page 12

Washrooms must offer different types of cubicle:

- Standard cubicles
- At least one ambulant cubicle per washroom
- For every four cubicles (including ambulant) you must have an enlarged cubicle
- Where you have a washroom with more than one toilet you will need a unisex wheelchair accessible washroom by the main washroom

Hotel Facilities*

Page 15

1 in every 20 rooms must provide for disabled use.

Bedrooms deemed wheelchair accessible should have a 50:50 ratio of baths and showers.

*Also applies to motels, relatives accommodation in hospitals and student accommodation.

Public Shower Facilities

Page 16

If you are offering shower facilities in a sports centre, swimming pool or health and leisure centre at least one should be wheelchair accessible.

Residential WC Facilities

Page 16

New houses must have a WC facility on the entry floor suitable for wheelchair access (Category 1).

How to comply with Doc M

Compliance with Doc M not only requires specifically designed fittings and components, but also pre-determined room layouts which will offer users ease of use depending on the location and type of facility in question.

The following pages provide guidance on what is required when designing washroom, toilet and showering facilities.



Single Toilet Facilities

Product solution on page 38

Large unisex washroom

Where you only have one toilet facility this needs to be a large unisex wheelchair accessible washroom:

- Room size 2200 x 2000mm
- Door must open outwards
- Must be unisex – no longer acceptable to have solely within male or female washroom

WC

- Raised height WC must be 480mm high (to top of seat) with a 750mm projection

Washbasin

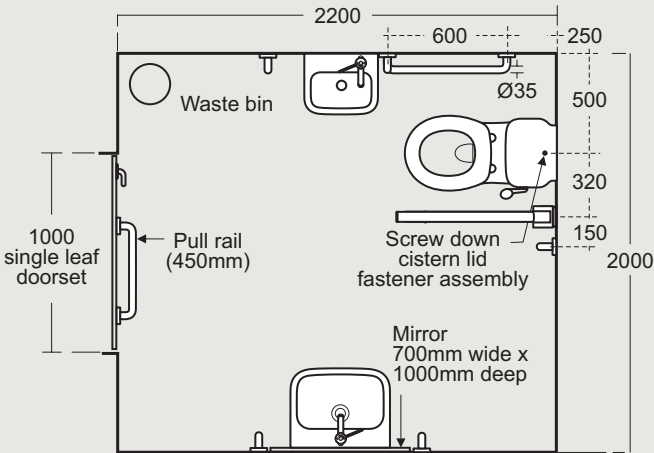
- Wall hung handrinse washbasin
- Additional standing height washbasin

Tap

- Thermostatic mixer tap TMV3 WRAS approved

Grab rails

- 2 x 600mm vertical grab rails by washbasin
- 2 x 600mm vertical grab rails by standing height washbasin
- Hinged support arm on open side of WC
- 1 x 600mm horizontal grab rail alongside WC
- Horizontal grab rail alongside WC 1 x 600mm
- 1 x 600mm vertical grab rail above and to the side of drop down rail
- 450mm horizontal grab rail on back of door



Multiple Toilet Facilities

Product solution on page 28,30,32,34

Unisex wheelchair accessible washroom

Where you have a washroom with more than one toilet you will need a unisex wheelchair accessible washroom by the main washroom:

- Room size 2200 x 1500mm
- Door must open outwards
- Must be a unisex facility

WC

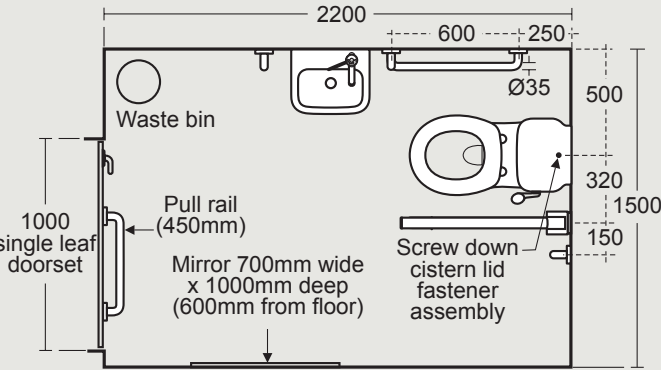
- Raised height WC must be 480mm high (to top of seat) with a 750mm projection

Washbasin

- Must have wall hung washbasin

Grab rails

- 2 x 600mm vertical grab rails
- Hinged support arm on open side of WC
- 1 x 600mm horizontal grab rail alongside WC
- Vertical grab rail alongside WC 1 x 600mm
- 1 x 600mm with 100mm projection horizontal grab rail on opposite side of WC
- 450mm horizontal rail on back of door



Multiple Toilet Facilities

Product solution on page 42

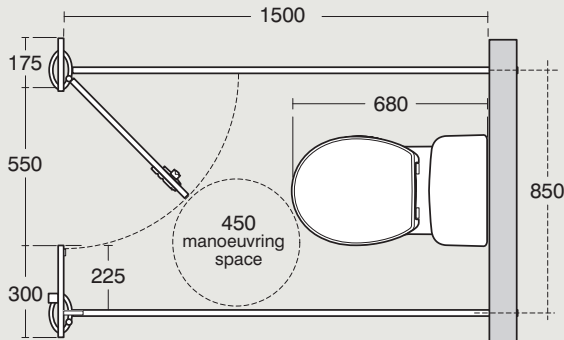
Standard cubicle

Washrooms must offer different types of cubicle:

- Must have 450mm diameter manoeuvring space
- Must be a minimum of 750mm wide
- Doors will ideally open outwards but can open inwards
- If doors open inwards, they must not infringe on activity space
- Inward opening doors must be able to be unlocked from the outside and lifted off their hinges

WC

- Standard height and projection WC



Ambulant disabled cubicle

Washrooms must have at least one ambulant cubicle:

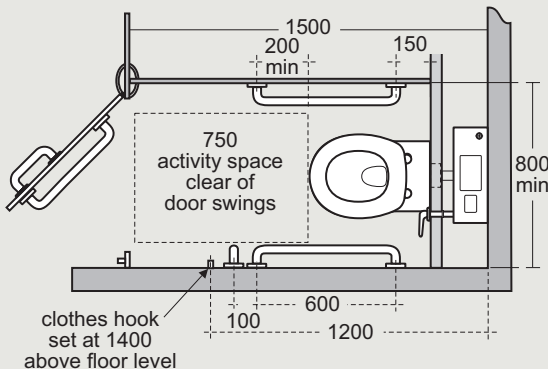
- Must have a minimum of one per washroom
- Must be 800mm wide
- Door swing must have 750mm clearance from front edge of WC
- Door must be outward opening
- Provide activity space for people who use crutches or have impaired leg movement
- Help avoid unnecessary travel to unisex toilet

WC

- Raised height WC must be 480mm high (to top of seat)
- Raised WC helps people who find it difficult to use a standard height WC

Grab rails

- Optional vertical grab rail
- Must have two horizontal grab rails



Multiple Toilet Facilities

Product solution on page 44

Enlarged cubicle

For every four cubicles, including an ambulant, there must be an enlarged cubicle. This is used by people who need extra space (e.g. people with babies or small children, people carrying luggage and the ambulant disabled).

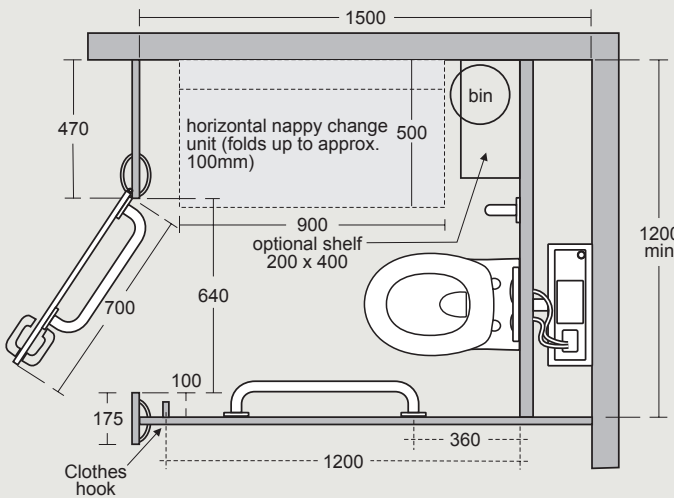
- Must be minimum 1200mm wide
- Must have a shelf
- Must have a folding baby table unless a separate facility is provided adjacent to the washroom

WC

- Standard height and projection WC

Grab rails

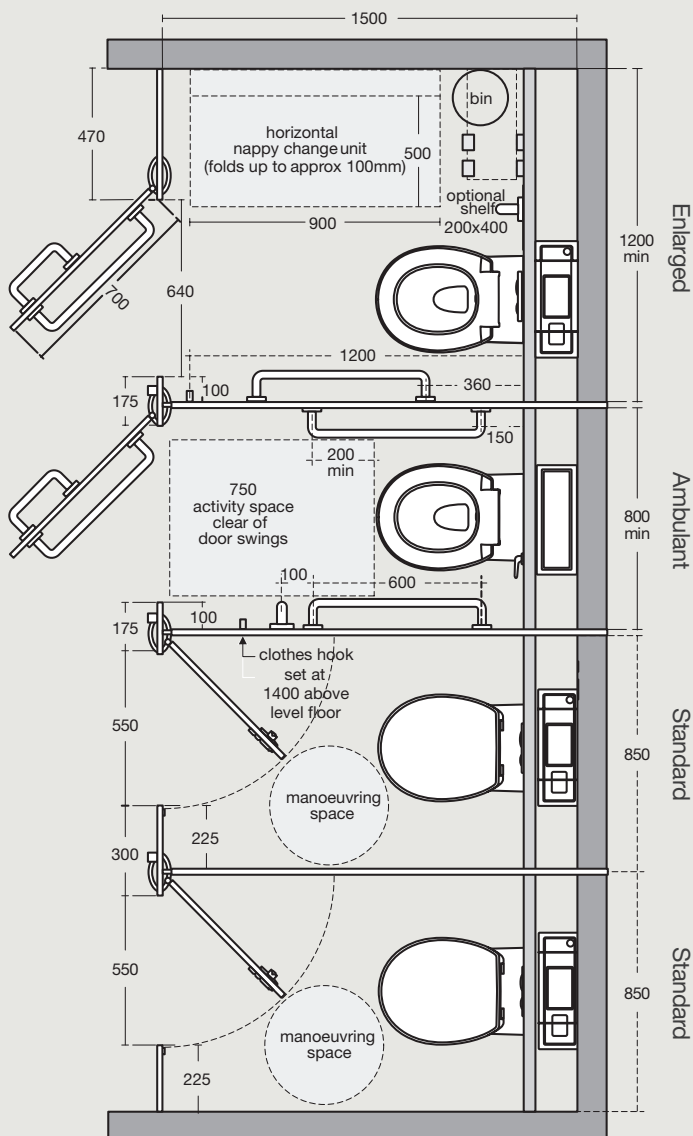
- Must have one horizontal and one vertical grab rail set around WC
- Must have a horizontal closing bar on the door



Multiple Toilet Facilities

Four cubicle combination

- Layout shows an example of a four cubicle washroom
- All washrooms must have one ambulant cubicle
- For every four cubicles (including ambulant) you must have an enlarged cubicle



Multiple Toilet Facilities

Changing Places Toilets

In large building developments an enclosed unisex toilet incorporating an adult changing table and hoist are desirable. These are for people with complex and multiple impairments who need personal assistance to use the toilet or change continence pads. The room has to be large enough to incorporate the disabled person and up to 2 assistants.

WC

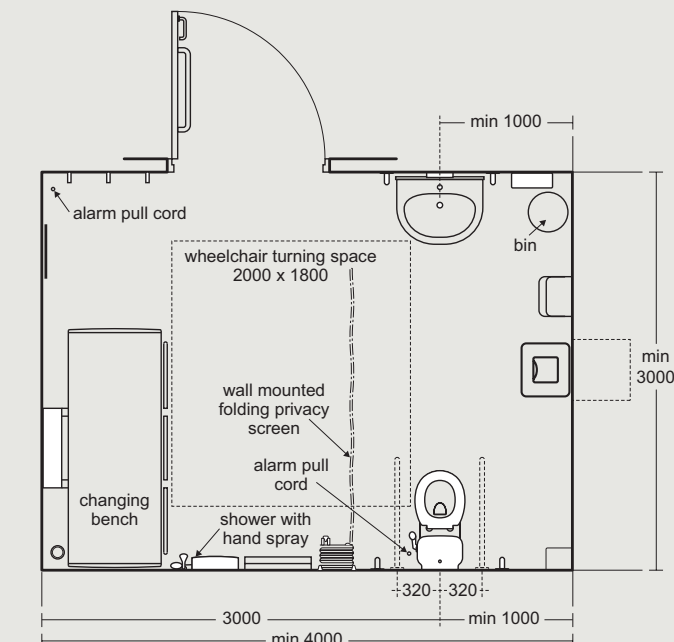
- Raised height extended WC
- Colostomy shelf
- Back rest if not close coupled
- 2 x Hinged support arms on both sides of WC, one with toilet roll dispenser
- 2 x 600mm vertical grab rails by WC

Grab rails

- Drop down grab rails on both sides of WC

Basin

- Ideally adjustable
- Large power assisted adjustable basin



Hotel Facilities*

Hotel Doc M bathroom

1 in every 20 rooms must provide for disabled use:

- All users should be able to wash or bathe independently or with assistance from others
- A choice of bathroom layout, wherever possible will meet more needs
- Layout should accommodate left and right hand transfer when there is more than one bathroom
- Floor must be slip-resistant

WC

- Raised height WC must be 480mm high (to top of seat) with a 750mm projection

Washbasin

- Needs to be reached from WC to allow for hand washing
- If larger washbasin is required it will have to be recessed

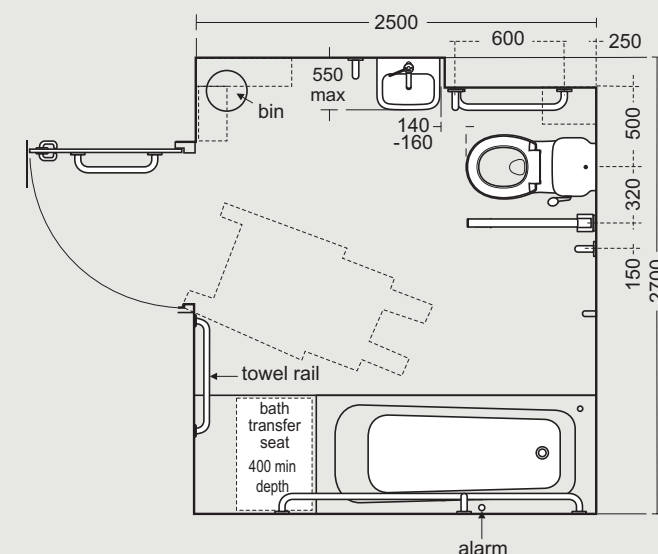
Bath

- Bath has to be 480mm high to allow for wheelchair transfer
- Bath needs a transfer seat 400mm deep and as wide as the bath

Grab rails

- 2 x 600mm vertical grab rails by washbasin
- 1 x 600mm horizontal grab rail alongside WC
- 1 x Hinged arm on open side of WC
- 450mm horizontal grab rail on back of door
- Angled horizontal grab rail to run alongside bath

*Also applies to motels, relatives accommodation in hospitals and student accommodation



Hotel Facilities*

Hotel shower room

Bedrooms deemed wheelchair accessible should have a 50:50 ratio of baths and showers:

- Half the wheelchair accessible bedrooms should have shower facilities to offer an alternative from baths
- Floor must be slip-resistant
- A shelf should be situated so it can be reached from the shower seat or wheelchair for toiletries

WC

- Raised height WC must be 480mm high (to top of seat) with a 750mm projection

Washbasin

- Needs to be reached from WC to allow for hand washing
- If larger washbasin is required it will have to be recessed

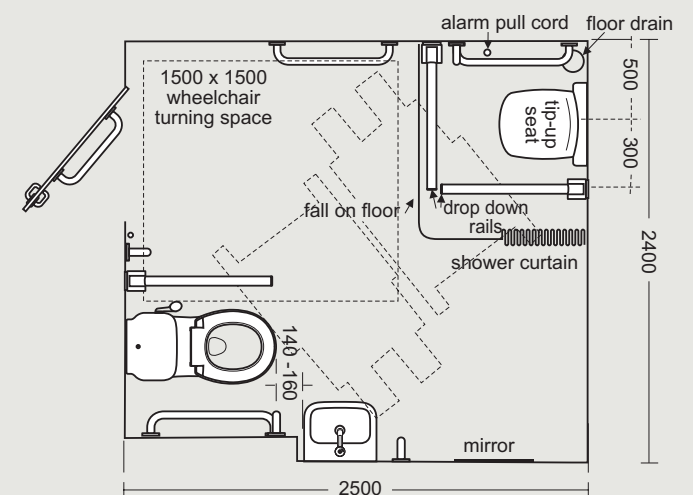
Shower

- Thermostatic shower with logical and clear markings
- Both fixed head and adjustable shower kit are required
- Tip up seat at 650mm minimum projection

Grab rails

- 2 x 600mm vertical grab rails by washbasin
- 1 x 600mm Horizontal grab rail alongside WC
- 1 x Hinged support arm on open side of WC
- 2 x Hinged support arm on open sides of tip up shower seat
- Horizontal grab rail alongside shower seat 1 x 600mm
- 450mm horizontal grab rail on back of door
- Retractable privacy curtain

*Also applies to motels, relatives accommodation in hospitals and student accommodation



Public Shower Facilities

Product solution on page 46,48

If you are offering shower facilities in a sports centre, swimming pool or health and leisure centre at least one should be wheelchair accessible:

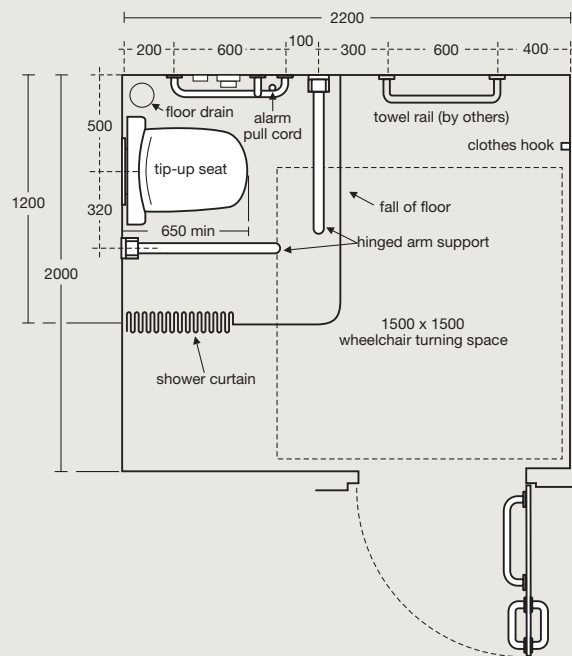
- Layout must allow privacy and space for assisted care
- Controls should be positioned between 750 and 1000mm from the floor
- Facility must have slip-resistant flooring
- Thermostatic shower with logical and clear markings
- Both fixed head and adjustable shower kit are required

Shower

- Thermostatic shower with logical and clear markings
- Both fixed head and adjustable shower kit are required
- Tip up seat at 650mm minimum projection

Grab rails

- 600mm vertical grab rail by shower rail
- 450 vertical rail with sliding shower handset
- 2 hinged support arms by tip up shower seat
- 600mm horizontal grab rail alongside shower seat
- 600mm horizontal grab rail outside shower
- 450mm horizontal grab rail on back of door
- Shower curtain and rail

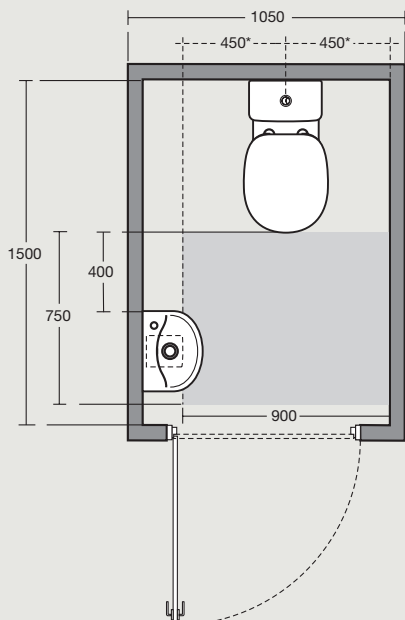
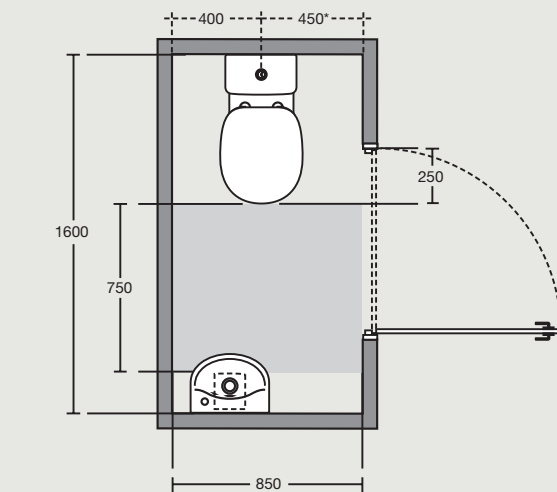


Residential WC Facilities

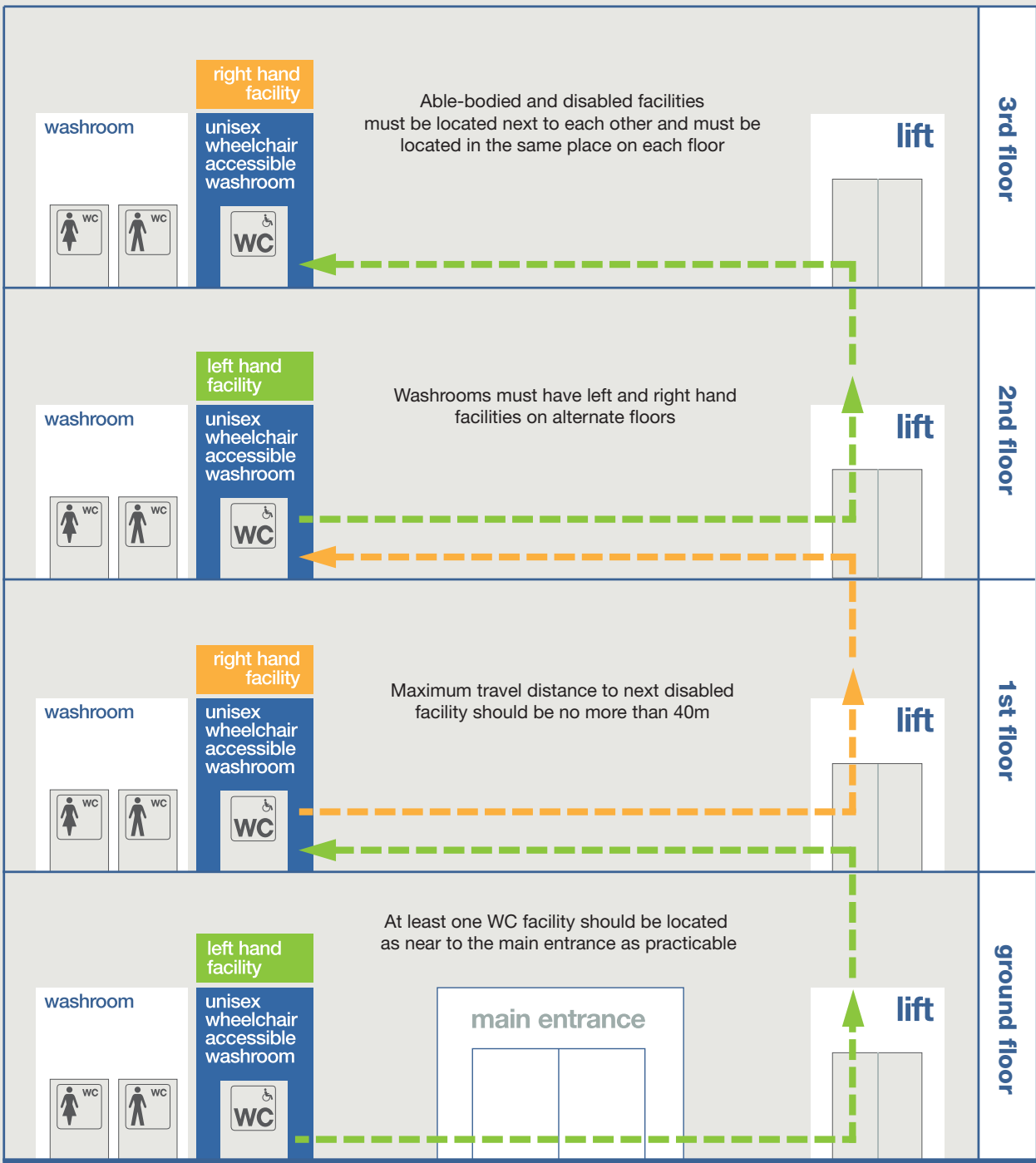
Volume 1 Dwellings
M4 category 1 visitable dwellings

New houses must have a WC facility on the entry floor suitable for wheelchair access:

- Must provide WC facility on entry floor of new buildings
- Doors must open outwards
- Entrance to property and WC facilities must allow for wheelchair access
- Must allow clear access to WC facilities
- Washbasin must not impede the wheelchair



WC location requirements for buildings of two storeys or more



Product Introduction

In order to make compliance to Doc M and the 2010 Equality Act simpler we have created a broad range of readymade solutions that cover the majority of Doc M regulations you are likely to come across in washrooms and bathrooms.

Each pack has been designed to provide you with everything you need to comply with Building Regulations with components that ensure the utmost safety and comfort for users. Take a look at the detail of each product over the next few pages to understand how they meet the recommended standards and provide the long term durability you would expect from Armitage Shanks.

WC

Our WC's come as close-coupled, back-to-wall or wall hung. With the close-coupled cistern the tank incorporates a cistern securing bolt. This ensures extra security particularly with users who might use the WC as support when transferring from their wheelchair as mentioned in BS8300.

'oblique transfer, using grab rails and grasping the WC or just grasping the WC for full support'

Basin

All Armitage Shanks, Doc M packs come as left or right handed rather than with centre tap holes. This is to ensure that users find it easy to wash their hands while seated on the WC as per BS8300.

Grab Rails

Feeling safe and secure when transferring from a wheelchair or manoeuvring around a washroom is understandably very important... that's why we test our grab rails to 200kg, which is in excess of the minimum weight requirements.

We also used aluminium for our grab rails as we want to ensure they last long in a potentially damper environment.

Taps

Our Doc M taps incorporate TMV3 thermostatic anti-scald valves for safety and have sequential operation with a long lever which makes them incredibly easy to use for anyone whatever their ability.

Seat

Toileting and washing puts people into very vulnerable positions. Our toilet seats come with lugs that makes sure the seat doesn't move and helps the user feel more secure.



Basins & Taps

Total control

Contour 21+ TMV3 WRAS approved thermostatic mixer with copper tails

A precise thermostat ensures that users will not be scalded and because it is integral within the mixer body eliminates the 'dead-leg' that can occur between a mixer and remote thermostat. The easy turn single lever caters for 'closed fist' operation, giving users total control even when the handle is wet.



Copper tails discourage bacteria growth

Built in thermostat helps prevent scalding especially for users with tactile sensitivity

Extended lever for closed fist operation

Integral thermostat also helps reduce the risk of legionella

Space saving and hygienic

Contour 21 Handrinse Washbasin

The perfect size for hand washing, this short projection 37cm basin has no overflow or chain hole, which minimises the risk of bacterial growth, while its compact size maximises the useable space available in the washroom.

BS 8300 calls for taps to be positioned on the side of the basin nearest to the WC. This will facilitate easier personal hygiene for the user, allowing them to rinse their hands from a seated position. Accordingly, Contour 21 handrinse basins are available with a choice of left or right tap holes.



No overflow or chainstay hole to avoid haven for bacteria

Left or right position of tap for ease of use from WC

Free-flow open waste to avoid accidental flooding



Sensorflow 21 Compact Mixer

The Sensorflow 21 allows for hands-free operation, making it even easier to wash hands.

Water technology listed.

WC Options

Optimal wheelchair transfer

Contour 21 WC & cistern

The extended projection of the pan and its raised height ensure wheelchair transfer is as easy as it can be. Close-coupled, wall-mounted and back-to-wall options flush at an economical 4.5 litre of water and the spatula flush lever is reversible for left or right hand use, ensuring easy operation.

The contemporary style is from the pen of award winning designer Robin Levien, Royal Designer for Industry.



Water saving
4.5 litre cistern

Seat retainers keep seat
secure when transferring from
wheelchair to WC

Reversible spatula
lever for left or right
hand use

Contour 21 close-coupled WC



Spatula lever for
easy flushing with
hand or elbow



Sensorflow 21, sensor activated
WC flush for touch free operation



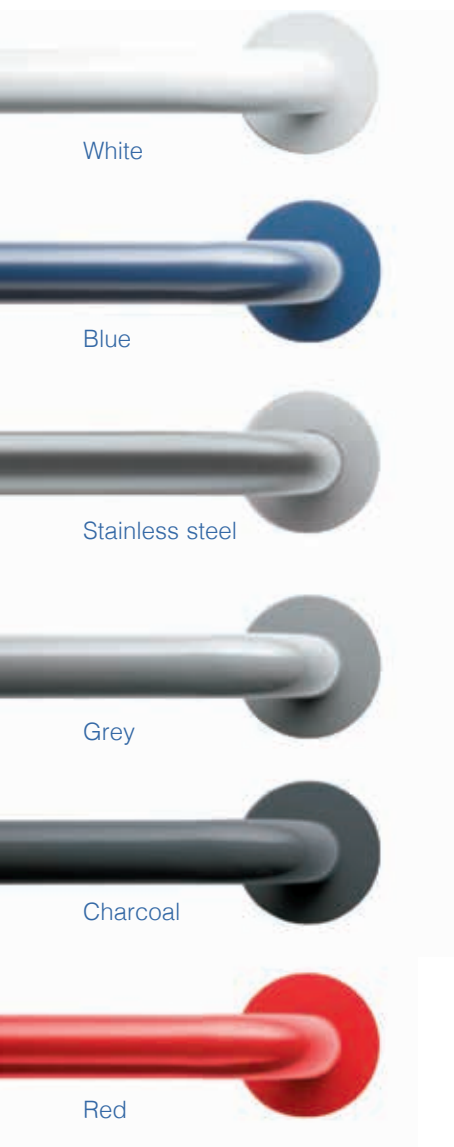
Contour 21+ wall-mounted WC



Back rest for use with back-to-wall
and wall hung extended WCs

Contour 21+ back-to-wall WC

Contour 21

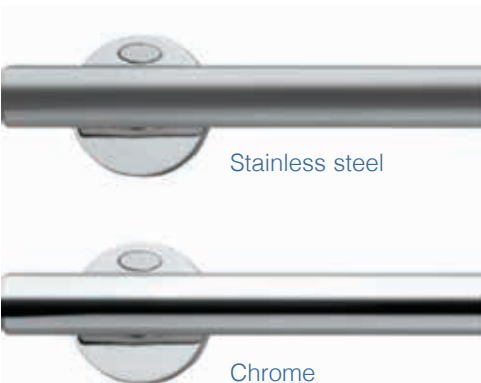


Get to grips with Doc M

Fixed grab rails

Available in white, grey, blue, charcoal, stainless steel or chrome, with the new addition of red to aid spacial awareness for visually impaired users. Each rail is made of 35mm diameter polyester coated aluminum (with the exception of the stainless steel and chrome rails), has concealed fixings for improved hygiene and security and is capable of supporting 200kg.

Contemporary 21



Hinged support arm

A robust support that folds up and out of the way, simplifying transfer from wheelchair to WC. Slip-resistant contact surfaces enhance safety and promote confidence in the user. The hinged support arm can support 200kg when fixed using best practice. There is an optional toilet roll holder that can be attached to the drop down rail. The holder has a ratcheted mechanism that allows the user to tear off pieces of paper with one hand.



Surface finish requirements

To help the visually impaired safely navigate a Doc M washroom the colours of the wall and floor finishes must have a minimum of 30 point difference in their Light reflectance value (LRV). Where the illuminance in a room is greater than 200, a 20 point difference in LRV is acceptable*

- All sanitary fittings, including grab rails, must contrast visually with background wall and floor colours
- Wall finishes and floor coverings must contrast with each other in terms of colour and texture
- A luminance differential of at least 20 points is mandatory
- The floor surface in all disabled washrooms should be non-slip

*The difference of LRV required is determined by the illuminance (amount of light falling on the surface). Where illuminance is greater than 200 lux the minimum LRV difference is 20. If illuminance is less than 200 then the minimum LRV difference is 30

COLOUR/FINISH	RAL	LRV
White	9016	87
Blue	5011	6
Grey	7005	19
Charcoal	7016	8
Red	3020	12



Product overview

Our Doc M packs are available in both right and left hand corner arrangements. They are supplied with layout drawings, detailing the necessary fixing positions necessary for Doc M compliance.

Doc M Close-Coupled WC Pack



Doc M Close-Coupled WC Pack with Standing Height Basin



Doc M Peninsular Care Pack



Doc M Back-to-Wall WC Pack



Doc M Wall-Mounted WC Pack



Doc M Ambulant Back-to-Wall or Close-Coupled Packs



Doc M Enlarged Back-to-Wall Cubicle



Doc M Sensorflow Wall-Mounted WC Pack



Concept Freedom Hotel Ensuite Bathroom + Shower Pack



Doc M Concealed Shower Room Pack



Doc M Exposed Shower Room Pack



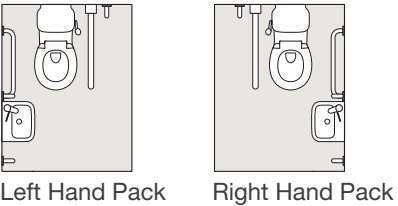
Doc M Close-Coupled WC Pack

LABC approved, this economical, simply styled, practical pack features a raised height WC, thermostatically controlled mixer, spatula flush lever and grab rails tested to over 200kg.

Pack Includes

- Raised height WC pan, 75cm projection
- Seat, no cover, top fixing hinges and retaining buffers
- Water saving cistern with spatula lever
- Handrinse washbasin, 37cm
- TMV3 WRAS approved thermostatic mixer tap with copper tails
- Grab rail straight, 60cm long x 4
- Grab rail straight, 45cm long
- Hinged support rail, 80cm long with toilet roll holder

Selecting your Doc M Pack



Product Codes

Left Hand

- S0683AC Contour 21+ Doc M Close coupled pack with white rails
- S0683LI Contour 21+ Doc M Close coupled pack with blue rails
- S0683LJ Contour 21+ Doc M Close coupled pack with grey rails
- S0683RN Contour 21+ Doc M Close coupled pack with charcoal rails
- S0683MY Contour 21+ Doc M Close coupled pack with stainless steel rails
- S0683GQ Contour 21+ Doc M Close coupled pack with red rails

Right Hand

- S0684AC Contour 21+ Doc M Close coupled pack with white rails
- S0684LI Contour 21+ Doc M Close coupled pack with blue rails
- S0684LJ Contour 21+ Doc M Close coupled pack with grey rails
- S0684RN Contour 21+ Doc M Close coupled pack with charcoal rails
- S0684MY Contour 21+ Doc M Close coupled pack with stainless steel rails
- S0684GQ Contour 21+ Doc M Close coupled pack with red rails

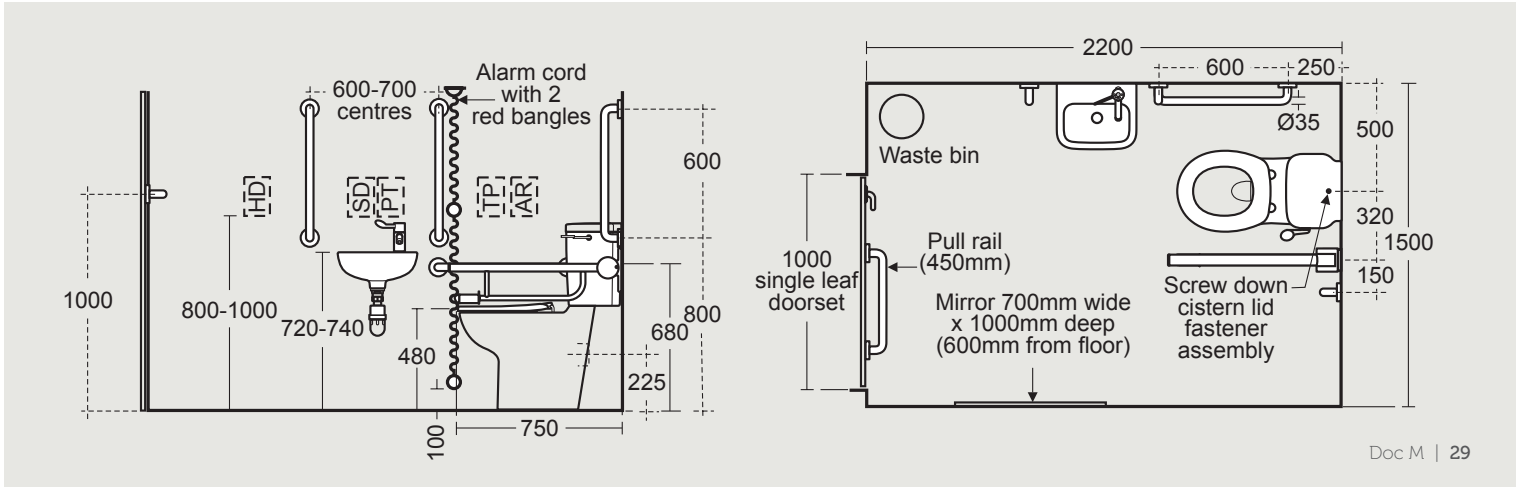


Unisex wheelchair accessible washroom solution ✓

S0683LJ
Left Hand



For more information or to order this product visit www.thebluebook.co.uk



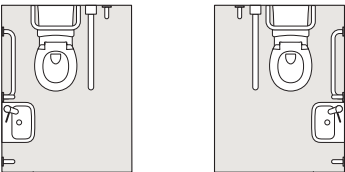
Doc M Back-to-Wall WC Pack

For washrooms having concealed cisterns, this LABC approved pack is the perfect partner. A 480mm high WC is fed by a cistern hidden by block-work or panelling to minimise clutter and maximise hygiene.

Pack Includes

- Back-to-wall rimless raised height WC pan, 75cm projection
- Seat, no cover, top fixing hinges and retaining buffers
- Conceala 2 cistern 4.5 or 6 litre single flush with spatula lever
- Handrinse washbasin, 37cm
- TMV3 WRAS approved thermostatic mixer tap with copper tails
- Grab rail straight, 60cm long x 4
- Grab rail straight, 45cm long
- Hinged support rail, 80cm long with toilet roll holder
- Back support rail
- Cushion for back support

Selecting your Doc M Pack



Left Hand Pack Right Hand Pack

Product Codes

Left Hand

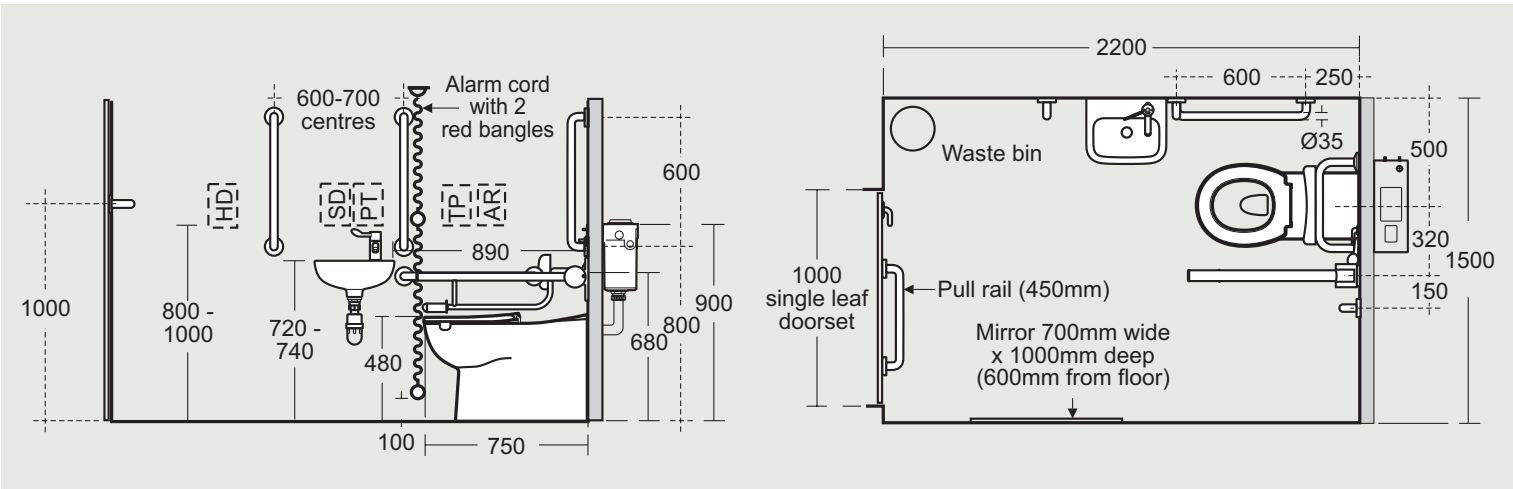
- S0685AC Contour 21+ Doc M Back-to-wall pack with white rails
- S0685LI Contour 21+ Doc M Back-to-wall pack with blue rails
- S0685LJ Contour 21+ Doc M Back-to-wall pack with grey rails
- S0685RN Contour 21+ Doc M Back-to-wall pack with charcoal rails
- S0685MY Contour 21+ Doc M Back-to-wall pack with stainless steel rails
- S0685GQ Contour 21+ Doc M Back-to-wall pack with red rails and red seat

Right Hand

- S0686AC Contour 21+ Doc M Back-to-wall pack with white rails
- S0686LI Contour 21+ Doc M Back-to-wall pack with blue rails
- S0686LJ Contour 21+ Doc M Back-to-wall pack with grey rails
- S0686RN Contour 21+ Doc M Back-to-wall pack with charcoal rails
- S0686MY Contour 21+ Doc M Back-to-wall Pack with stainless steel rails
- S0686GQ Contour 21+ Doc M Back-to-wall pack with red rails and red seat



For more information or to order this product visit www.thebluebook.co.uk



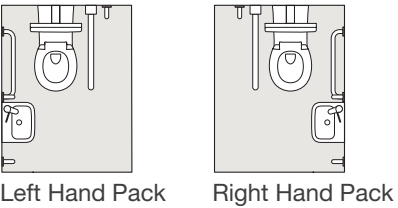
Doc M Wall-Mounted WC Pack

Clean modern lines and elegant fixtures lift this LABC approved pack beyond the users level of expectation. From the wall-mounted WC to the chrome or satin finish grab rails this is a disabled washroom of distinction.

Pack Includes

- Rimless wall-mounted WC pan, 75cm projection
- Seat, no cover, top fixing hinges and retaining buffers
- Conceala 2 cistern delay fill 4.5/3 litre dual flush
- Contemporary flush plate dual flush
- Handrinse washbasin, 37cm
- TMV3 WRAS approved thermostatic mixer tap with flexible tails
- Contemporary grab rail straight, 60cm long x 4
- Contemporary grab rail straight, 45cm long
- Contemporary hinged support rail, 80cm long
- Multi-system back support

Selecting your Part M Pack



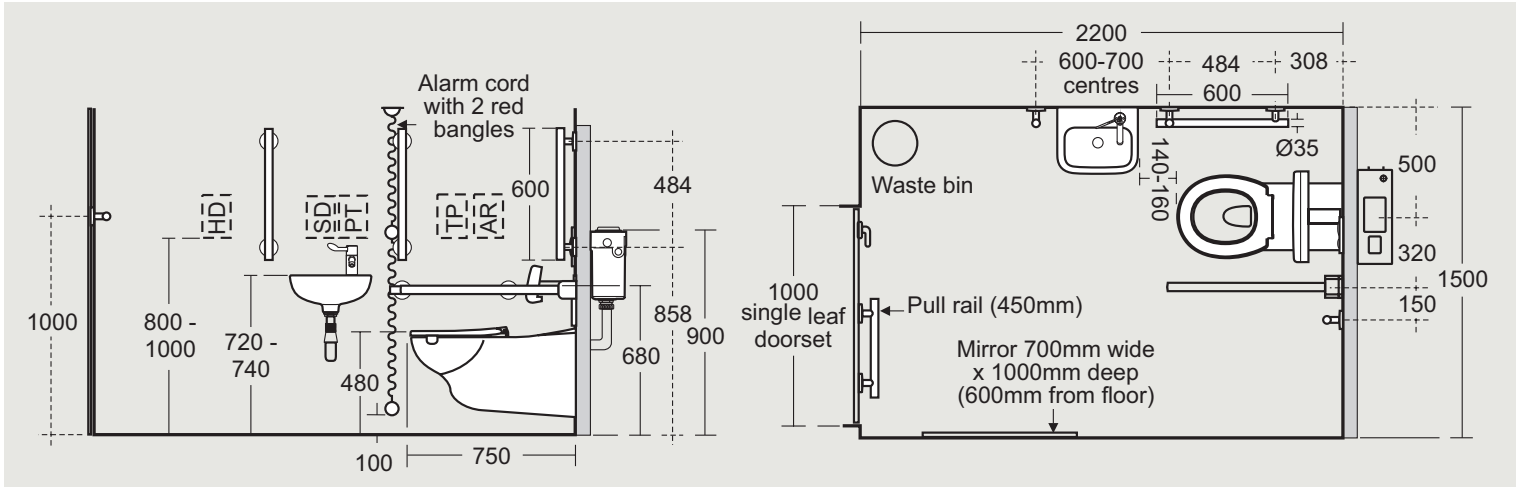
Product Codes

Left Hand

- S6972AA Contour 21 Doc M Wall Hung Pack with chrome rails
- S6972MY Contour 21 Doc M Wall Hung Pack with stainless steel rails

Right Hand

- S6973AA Contour 21 Doc M Wall Hung Pack with chrome rails
- S6973MY Contour 21 Doc M Wall Hung Pack with stainless steel rails



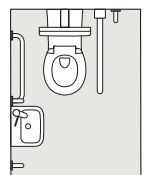
Doc M Sensorflow Wall-Mounted WC Pack

This LABC approved pack offers striking contemporary design and proven Sensorflow technology create a state of the art Doc M compliant facility, whose sensor activated electronic basin mixer and WC flush eliminate the need for manual operation.

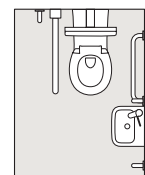
Pack Includes

- Rimless wall-mounted WC pan, 75cm projection
- Seat, no cover, top fixing hinges and retaining buffers
- Sensorflow 21 WC flushing device, panel mounted sensor, delay fill 4 or 4.5 litre
- Washbasin, no overflow or chainstay hole, 37cm
- WRAS approved and Water Technology list sensor tap and TMV3 WRAS approved thermostatic mixing valve
- Contemporary grab rail straight, 60cm long x 4
- Contemporary grab rail straight, 45cm long
- Contemporary hinged support rail, 80cm long
- Multi-system back support
- Concept toilet roll holder

Selecting your Part M Pack



Left Hand Pack



Right Hand Pack

Product Codes

Left Hand

S6986AA Sensorflow 21 Wall hung Doc M Pack with chrome rails

Right Hand

S6987AA Sensorflow 21 Wall hung Doc M Pack with chrome rails

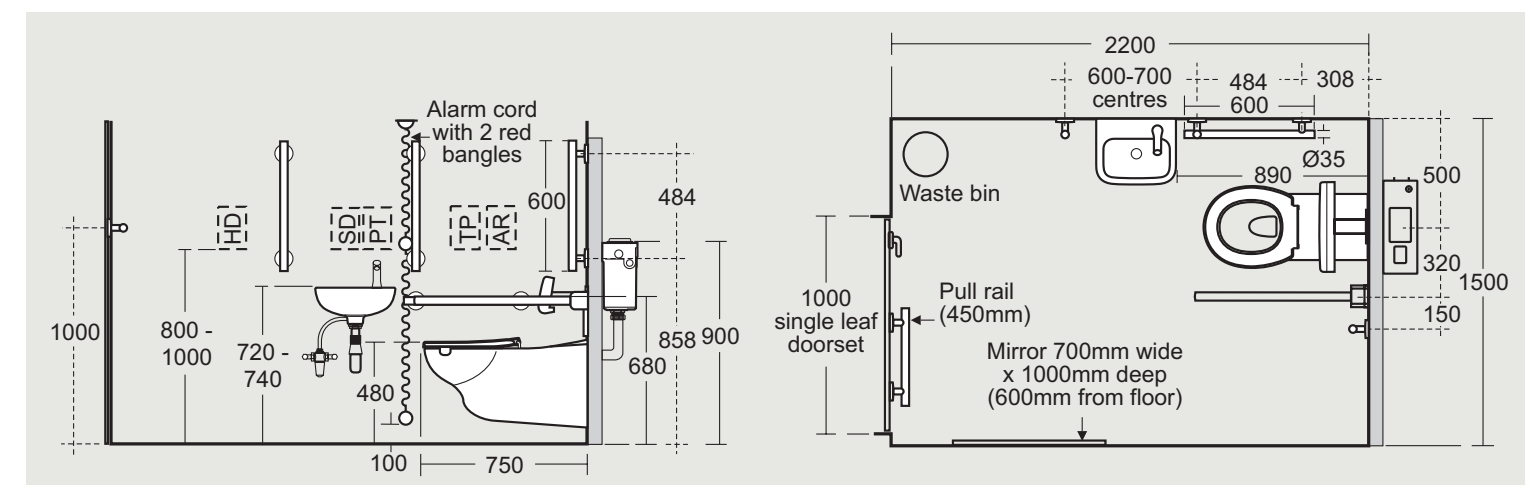


For more information or to order this product visit www.thebluebook.co.uk



Unisex wheelchair accessible washroom solution ✓

S6986AA
Left Hand



Concept Freedom Hotel Ensuite Bathroom + Shower Pack

Concept Freedom Hotel Ensuite Bathroom

Luxury wheelchair accessible ensuite bathroom that meets the requirements for Doc M. Concept Freedom is part of the Concept range and brings sophistication into this often design neglected area.

Ideal for hotels and care homes.

En-suite Bathroom Pack Includes

- Wall-mounted WC pan, 75cm projection
- Seat, no cover
- Concealed cistern 4/2.6 litre dual flush
- Karisma Flush plate
- Elongated accessible washbasin, 60cm
- Concept Blue mixer tap and TMV3 WRAS Thermostatic mixing valve
- Contemporary 21 grab rail straight, 60cm long x 4
- Contemporary 21 grab rail straight, 45cm long
- Contemporary 21 hinged support rail, 80cm long
- Contemporary back rest

Product Codes

S6402AA Concept Freedom ensuite bathroom pack - chromium rails and white seat

Concept Freedom Shower Pack

Luxury wheelchair accessible shower room that meets the requirements of Doc M. Pack includes everything required to specify a shower room including luxury Hewi shower seat, chrome grab rails and thermostatic shower valve and shower kit with easy operation handles.

En-suite Bathroom Pack Includes

- Detachable Hewi shower seat and rail
- Freedom dual thermostatic shower with easy operation pin handles, fixed showerhead and adjustable handspray
- Contemporary 21 hinged support rail, 80cm long
- Contemporary 21 grab rail straight, 60cm long x 2

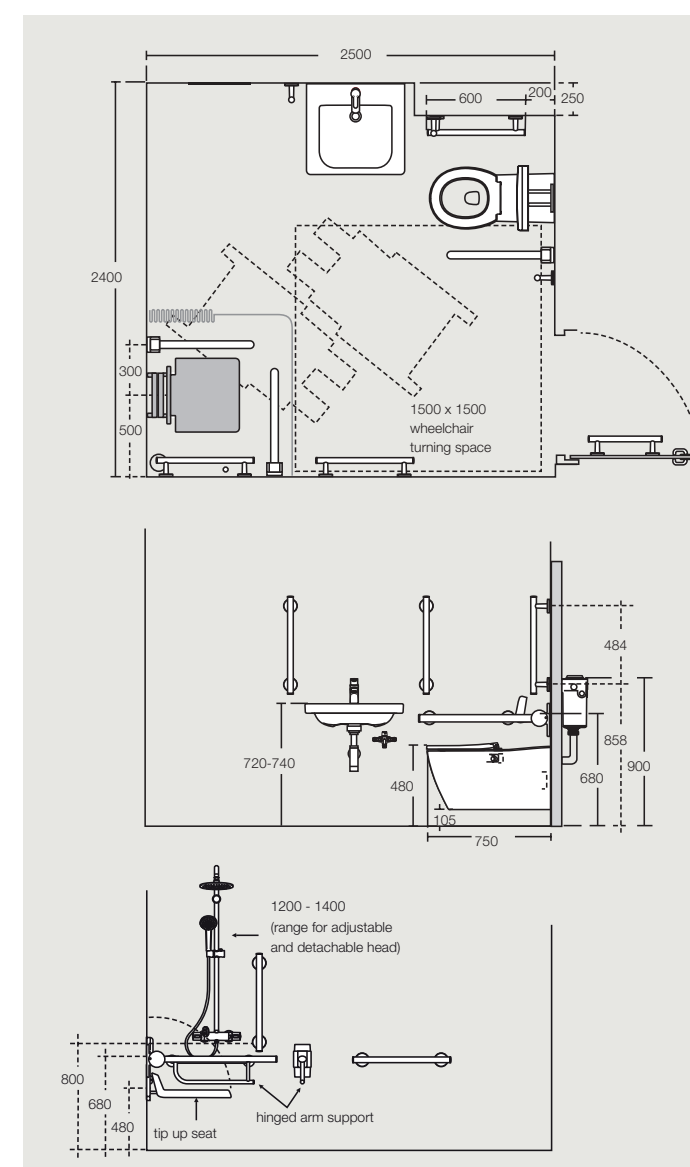
Product Codes

S6407AA Concept Freedom shower pack

For more information or to order this product visit www.thebluebook.co.uk



Hotel Doc M bathroom solution ✓



Doc M Close-Coupled WC Pack with Standing Height Basin

The room set is described in Doc M as ‘Doc M Close-Coupled Pack and additional washbasin for standing users’. This provides the unisex wheelchair toilet facility suitable for use where only one washroom exists within a building.

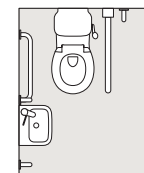
Pack Includes

- Raised height WC pan, 75cm projection
- Seat, no cover, top fixing hinges and retaining buffers
- Water saving cistern with spatula lever
- Handrinse washbasin, 37cm
- TMV3 WRAS approved thermostatic mixer tap with copper tails
- Grab rail straight, 60cm long x 4
- Grab rail straight, 45cm long
- Hinged support rail, 80cm long with toilet roll holder

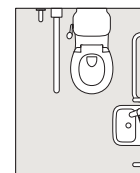
Additional Items

- Portman 21 washbasin, 50cm trap and waste
- Grab rail straight, 60cm long
- TMV3 WRAS approved thermostatic mixer tap with copper tails

Selecting your Part M Pack



Left Hand Pack



Right Hand Pack

Product Codes

Left Hand

S0683AC	Contour 21+ Doc M Close coupled pack with white rails
S0683LI	Contour 21+ Doc M Close coupled pack with blue rails
S0683LJ	Contour 21+ Doc M Close coupled pack with grey rails
S0683RN	Contour 21+ Doc M Close coupled pack with charcoal rails
S0683MY	Contour 21+ Doc M Close coupled pack with stainless steel rails
S0683GQ	Contour 21+ Doc M Close coupled pack with red rails

Right Hand

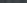
S0684AC	Contour 21+ Doc M Close coupled pack with white rails
S0684LI	Contour 21+ Doc M Close coupled pack with blue rails
S0684LJ	Contour 21+ Doc M Close coupled pack with grey rails
S0684RN	Contour 21+ Doc M Close coupled pack with charcoal rails
S0684MY	Contour 21+ Doc M Close coupled pack with stainless steel rails
S0684GQ	Contour 21+ Doc M Close coupled pack with red rails

Additional Product Codes

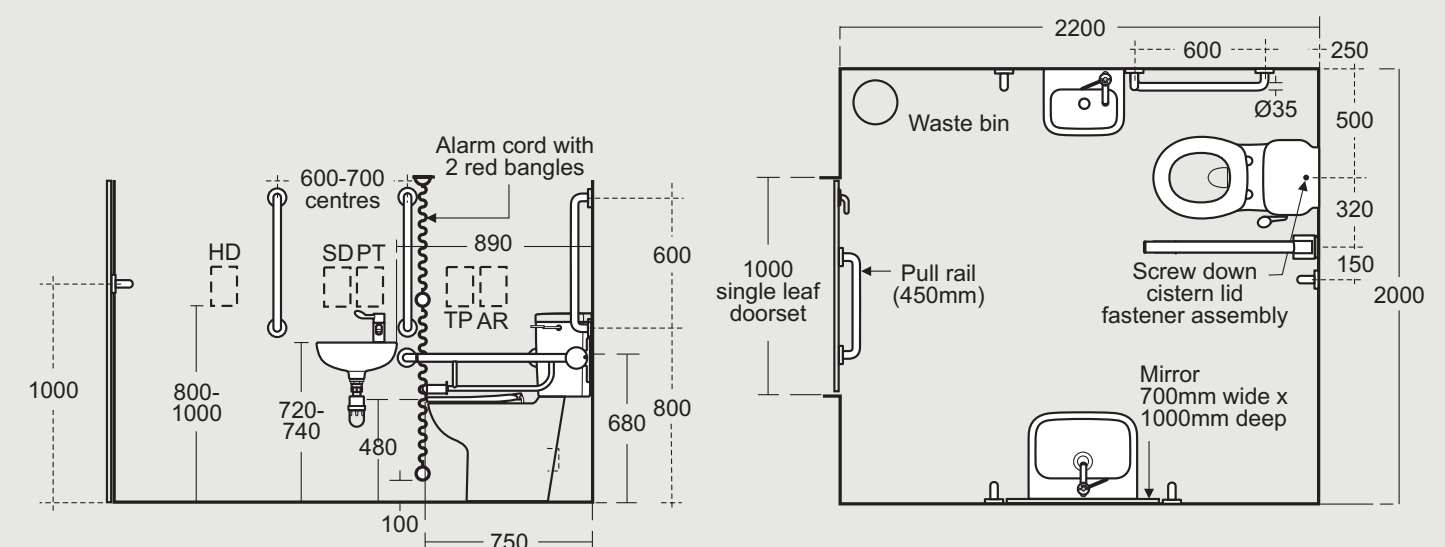
S2252(01)	Portman 21 washbasin, 50cm
S9137(67)	Bracket concealed with clamps and centre waste support for Portman 21 washbasins, 60 and 50cm
A6697(AA)	Contour 21+ TMV3 WRAS approved thermostatic mixer tap with copper tails
S8734(AA)	Brass swivel plug waste, 80mm unslotted tail
S8910(67)	Plastic bottle trap, 75mm seal
S6454(AC)	Contour 21 grab rail straight, 60cm long x 2

For more information or to order this product visit www.thebluebook.co.uk



Large unisex washroom for single toilet solution 

S0683AC
Left Hand



Doc M Peninsular Care Pack

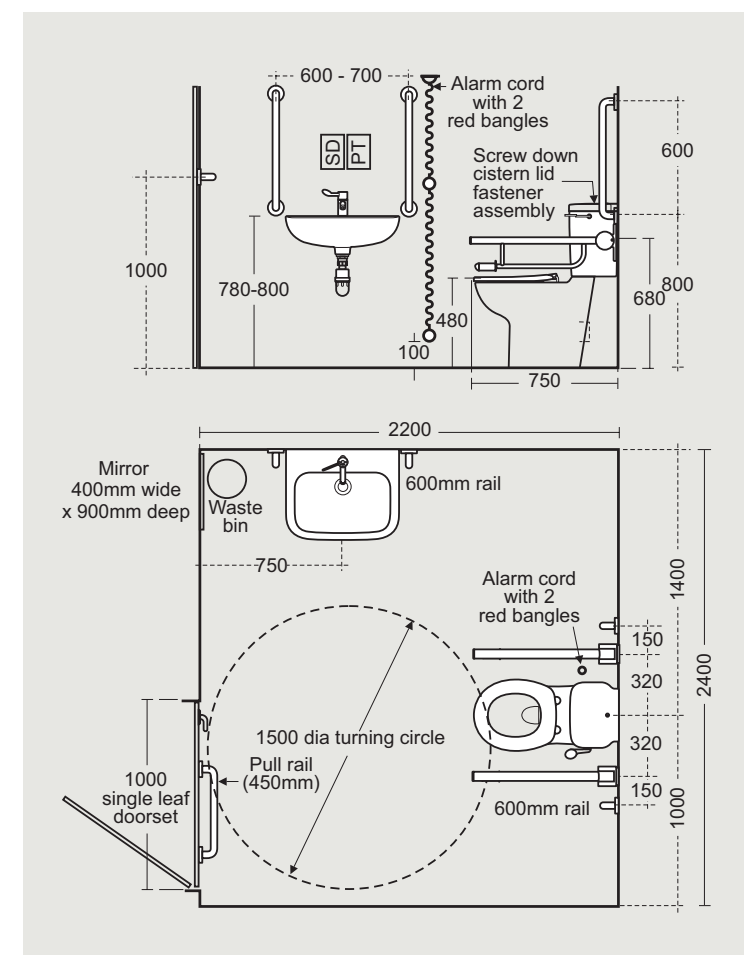
Designed especially to provide wheelchair access to the WC from either side, the functional ergonomics of the close-coupled WC and twin grab rails produce a washroom of ultimate convenience.

Pack Includes

- Close-coupled raised height WC pan, 75cm projection with floor fixing kit
- 2 hinged arm support, with toilet roll holder
- Seat, no cover, top fixing hinges and retaining buffers
- Larger washbasin, 60cm
- TMV3 WRAS approved thermostatic mixer tap with copper tails
- Water saving cistern with spatula lever
- Grab rail straight, 60cm long x 4
- Grab rail straight, 45cm long

Product Codes

- S0682AC Contour 21+ Doc M Peninsular pack with white rails
 S0682RN Contour 21+ Doc M Peninsular pack with charcoal rails
 S0682LI Contour 21+ Doc M Peninsular pack with blue rails



For more information or to order this product visit www.thebluebook.co.uk

Doc M Ambulant Back-to-Wall or Close-Coupled Packs

Equipment for ambulatory accessible WC compartments for walking impaired people.

Pack Includes

- Rimless back-to-wall WC. Raised height standard, projection
- Seat, no cover, top fixing hinges and retaining buffers
- Conceala 2 cistern 4.5 or 6 litre single flush with lever
- Grab rail straight, 60cm long x 3
- Grab rail straight, 45cm long
- Clothes hook

Product Codes

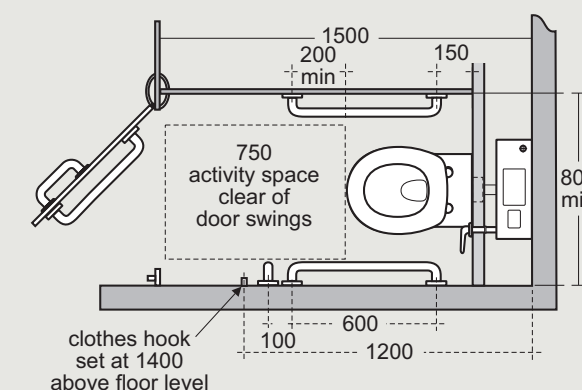
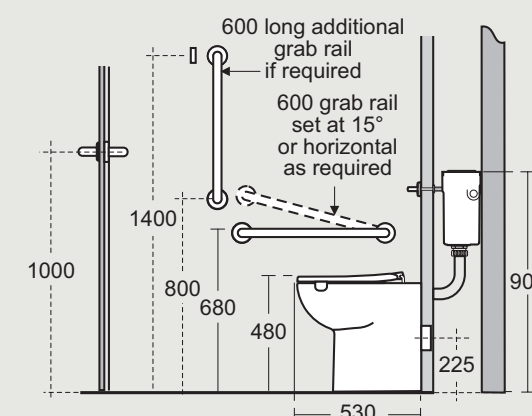
Close Coupled

- S6958AC Contour+ 21 Doc M Ambulant close coupled pack with white rails
S6958LI Contour+ 21 Doc M Ambulant close coupled pack with blue rails

Back-to-wall

- S0681AC Contour+ 21 Doc M Ambulant back-to-wall pack with white rail
S0681LI Contour+ 21 Doc M Ambulant back-to-wall pack with blue rails
S0681LJ Contour+ 21 Doc M Ambulant back-to-wall pack with grey rails
S0681RN Contour+ 21 Doc M Ambulant back-to-wall pack with charcoal rails
S0681MY Contour+ 21 Doc M Ambulant back-to-wall pack with stainless steel rails
S0681GQ Contour+ 21 Doc M Ambulant back-to-wall pack with red rails

For more information or to order this product visit www.thebluebook.co.uk



Doc M Enlarged Back-to-Wall Cubicle

Equipment for extra wide enlarged WC cubicle suitable for ambulant disabled, people with babies or small children and/or people with large bags/luggage. This installation conforms to Doc M of the Building Regulations.

Product Codes

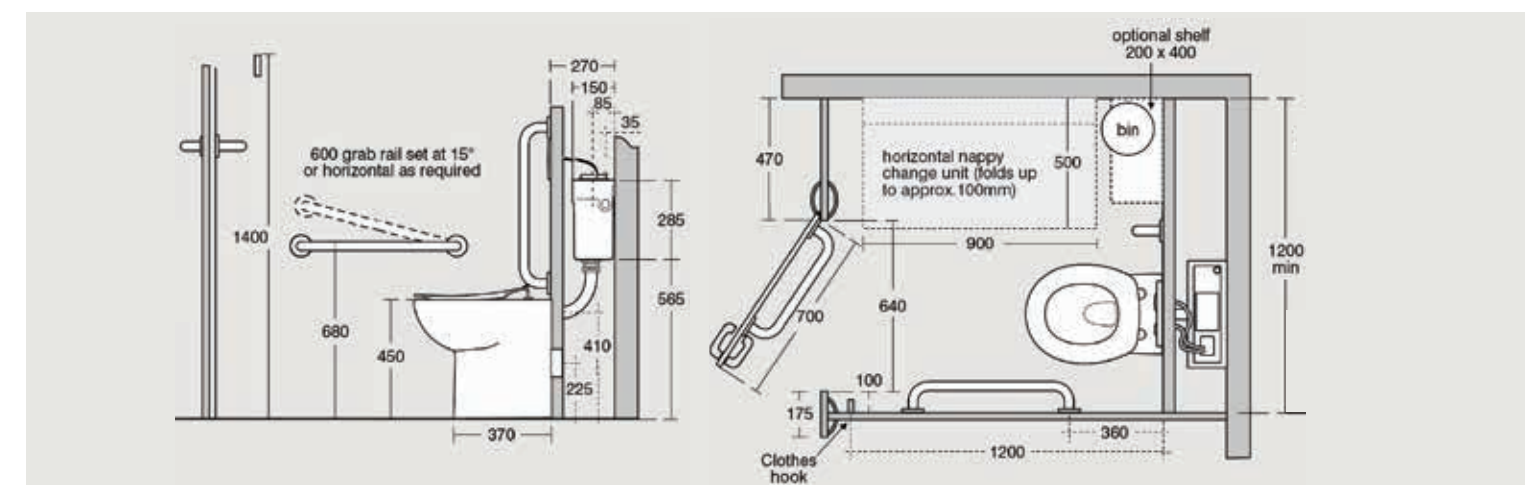
S0440(HY)	Back-to-wall rimless, raised height WC pan with horizontal outlet
S4065(01)	Seat and cover, top fixing hinges, white
S4066(01)	Seat no cover, top fixing hinges, white
S3643(67)	Conceala 2 cistern 4.5/3 or 4/2.6 litre dual flush valve
S4504(MY)	Flush plate dual flush
S6454(AC)	Grab rail straight, 60cm long x 2, white
S6452(AC)	Grab rail straight, 45cm long, white
S5093(AC)	Clothes hook

Other colour options available include:

Blue rails and blue seat (LI)
Grey rails and grey seat (LJ)
Charcoal rails and charcoal seat (MY)
Stainless steel rails and grey seat (RN)
Red rails and red seat (GQ)



Enlarged Back-to-Wall cubicle solution ✓



For more information or to order this product visit www.thebluebook.co.uk

Doc M Concealed Shower Room Pack

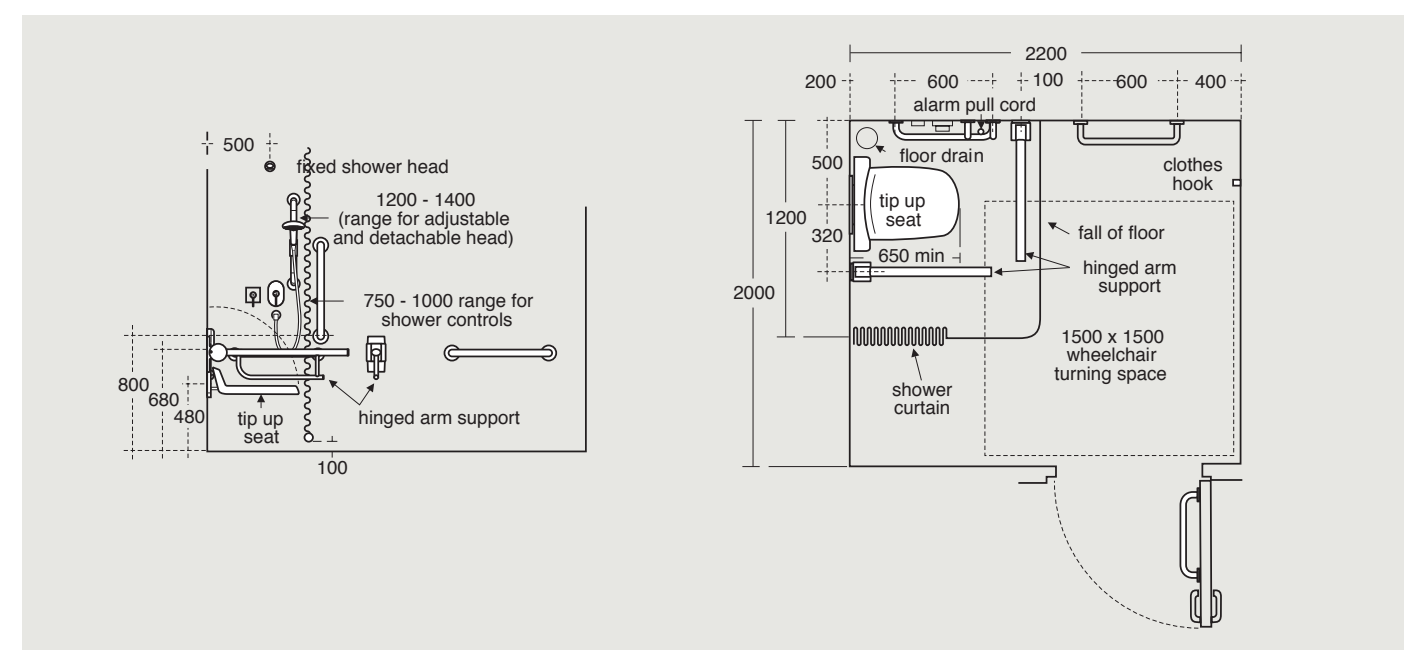
An installation for use by ambulant disabled, walking impaired and infirm people, providing shower area with slip-resistant floor, hinged seat, lever operated mixer fixed or adjustable shower head, shower curtain and grab rails. Thermostatic shower valve TMV3 WRAS approved to help prevent scalding. The shower valve and diverter are designed for duct installation.

Pack Includes

- Folding shower seat and back support
- Grab rail straight, 60cm long x 3
- Grab rail straight, 45cm long x 2
- Hinged support rail, 80cm long x 2
- TMV3 WRAS approved lever operated thermostatic mixer
- Shower handset holder
- Handset and hose
- Fixed short projection shower head
- Lever operated diverter
- Clothes hook
- Curtain rail and curtain

Product Codes

S6960AC	Contour 21 DOC M Unisex Shower pack with white rails
S6960LI	Contour 21 DOC M Unisex Shower pack with blue rails
S6960LJ	Contour 21 DOC M Unisex Shower pack with grey rails
S6960RN	Contour 21 DOC M Unisex Shower pack with charcoal rails
S6960MY	Contour 21 DOC M Unisex Shower pack with stainless steel rails



For more information or to order this product visit www.thebluebook.co.uk

Doc M Exposed Shower Room Pack

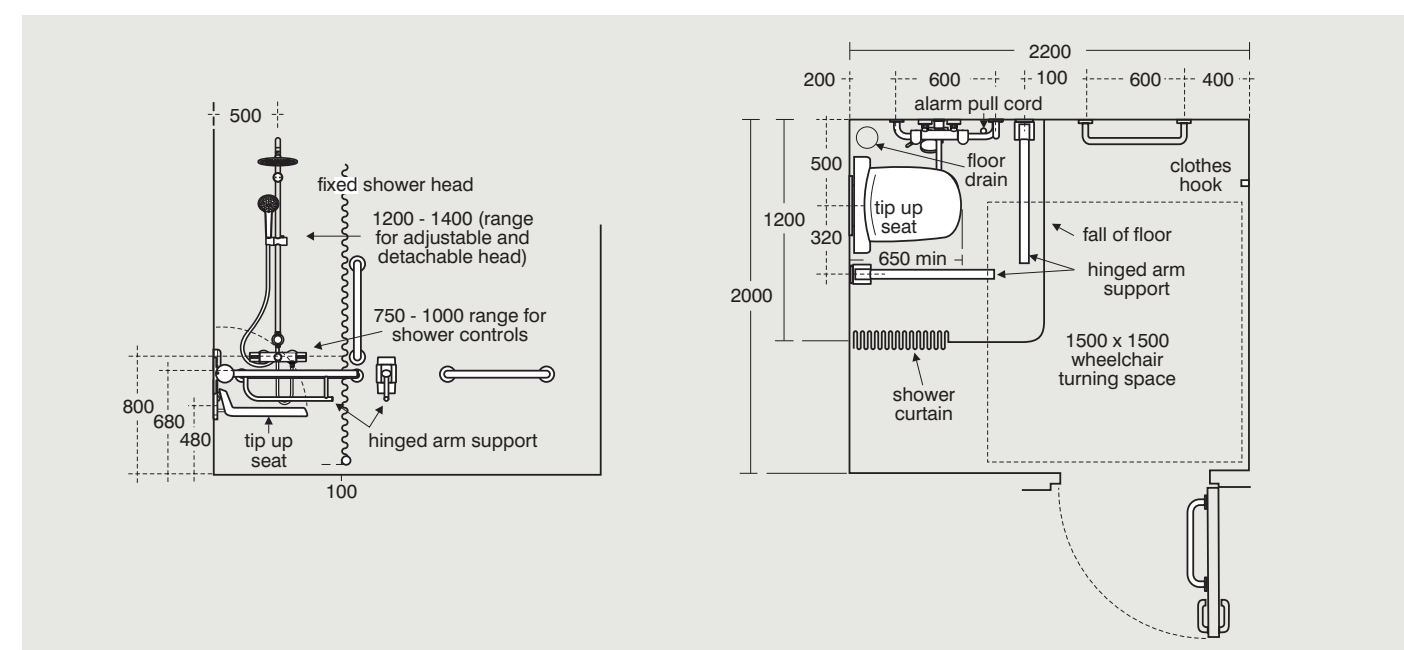
An installation for use by ambulant disabled, walking impaired and infirm people, providing shower area with slip-resistant floor, hinged seat, lever operated mixer, fixed or adjustable shower head, shower curtain and grab rails. Thermostatic shower valve TMV3 WRAS approved to help prevent scalding. The pack is designed for use on solid walls where there is no duct or panel recess.

Pack Includes

- Folding shower seat and back support
- Grab rail straight, 60cm long x3
- Grab rail straight, 45cm long x 1
- Hinged support rail 80cm x 2
- TMV3 WRAS approved exposed shower mixer
- Ideal duo shower kit with fixed head and movable handset and hose
- Curtain rail and curtain
- Clothes Hook

Product Codes

S0755AC	Contour 21 Exposed DOC M Unisex Shower pack with white rails
S0755LI	Contour 21 Exposed DOC M Unisex Shower pack with blue rails
S0755LJ	Contour 21 Exposed DOC M Unisex Shower pack with grey rails
S0755RN	Contour 21 Exposed DOC M Unisex Shower pack with charcoal rails
S0755MY	Contour 21 Exposed DOC M Unisex Shower pack with stainless steel rails
S0755GQ	Contour 21 Exposed DOC M Unisex Shower pack with red rails



For more information or to order this product visit www.thebluebook.co.uk

Guarantee

Lifetime on all ceramic products

5 years on taps, mixers, toilet seats, stainless steel and cistern fittings

Our confidence in the quality and reliability of our product allows us to offer outstanding extended guarantees on all our products – where the product fails within 5/25 years/ lifetime we offer a free replacement or replacement part (or nearest equivalent). So when your washroom has been satisfactorily installed and is working well, please ensure you register your guarantee.

This guarantee is transferable – it applies to the product not the purchaser provided the guarantee registration is passed on to the new owner.

Liability is limited to individual products and the guarantee does not cover the consequential loss or damage or installation costs. This guarantee does not affect your statutory rights. Products must be installed, used and cared for in line with our fixing instructions and local water regulations, and room must be adequately ventilated.

Parts (eg. flushvalves) are guaranteed for five years and will be replaced if found to be faulty. The guarantee does not cover general wear and tear.

Applies to UK and Republic of Ireland only.

You can register for guarantees on a bathroom bought on your behalf by a plumber or builder.

Colours printed in this book are as near as possible to the manufactured range of Armitage Shanks products. Our policy is one of continuous improvement and we reserve the right to change specification and design at any time without notice.

All measurements are in millimetres and are approximate. Products can be subject to tolerances due to manufacturing processes.

Building information Modeling (BIM)

We've been leading innovation within the bathroom sector for decades and with BIM there is no exception. Each of our BIM drawings are created within Ideal Standard directly from the original design data, providing you with the highest visual representation and accurate up to date COBie data. Our expert team are also able to offer a bespoke BIM package.

Idealspec

Idealspec.co.uk, is the industry bible. With over 5,000 dedicated listings, it has become the UK's largest collection of bathroom and washroom products. It offers a specifier tool that generates documentation in NBS format and downloadable CAD files. All optimised for use on smartphones when you are on site. www.IdealSpec.co.uk

The Idealspec website contains all the information you need on DOC M products shown in this brochure. Download images, drawings, CAD and BIM and update on the latest products and information.



Technical helpline 0870 122 8822

Planning

We offer a complete 3D and 4D visualisation service using Virtual Worlds planning software.

Professional Services

Armitage Shanks have experience and expertise that can prove invaluable to your project. Our sales support teams know the product ranges back-to-front and field based contact managers can provide technical advice and training in installation.

We understand that your business relies on our supply chain, ease of installation and guaranteed performance.

Business support

Armitage Shanks specialist service has been created as a 'one stop shop' to work alongside you until your project reaches a successful conclusion. We bring all of our expertise and product knowledge to bear on your behalf, however large or small your budget. We are effectively a partner in parallel and we:

- hold a huge amount of information and experience in water delivery
- can advise on issues around environment legislation and health and safety
- can match appropriate products to specific applications
- work with you to prepare estimates, costings and schedules
- track projects from proposal to completion
- advise on after care and maintenance.

Our aim is to enable the smooth specification of a project making life easy for you.

0870 122 8822 Monday to Friday 9:00 - 5:30pm

Hosted on www.nationalbimlibrary.com and www.BIMobject.com

Supporter of BIM4M2 www.bim4m2.co.uk

For further information on any products; please call 0870 122 8822 or visit www.idealspec.co.uk

Additional Information GOV.UK www.gov.uk

The recommendations in this guide are based on Armitage Shank's interpretation of Part M of The Building Regulations. The onus is on the specifier to ensure their designs are in line with Part M, wherever possible by direct reference to it and other relevant publications.

© IDEAL STANDARD (UK) LTD. P1938 04/19



Armitage Shanks

Armitage, Rugeley, Staffordshire WS15 4BT

Tel 01543 490253 | Fax 01543 491677 | www.idealspec.co.uk

Armitage Shanks Dublin Ltd

3013 Lake Drive, Citywest Business Campus, Dublin 24

Tel: 003531 456 4525



Ideal Standard