

# Regional Residential House Builder

## Bathroom Specification



Ideal Standard



# Contents

## INTRODUCTION

---

About Ideal Standard	4
Singular™	12
Leaders in Performance	14
Delivering on Quality	20
Supporting our Partners	22
Together for a better future	27

## PROPOSED SPECIFICATION

---

### Gold Specification

Cloakroom	30
Bathroom	32
Ensuite	36

### Silver Specification

Cloakroom	40
Bathroom	42
Ensuite	46

### Bronze Specification

Cloakroom	50
Bathroom	52
Ensuite	56
Kitchen Taps	60

**The Ideal Standard Group works across urban development, architecture and residential design to provide inspirational bathroom solutions across Europe and MENA.**



**700m+**  
sales

---

**8,000+**  
team members  
worldwide

---

**9**  
manufacturing sites,  
mostly in Europe & MENA



# Our innovation throughout the years

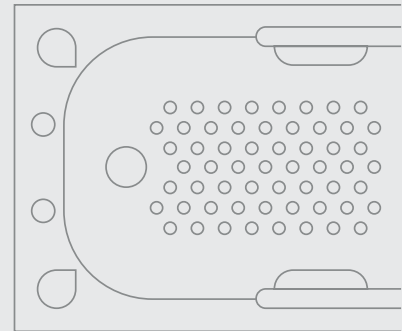
**1902**

The first one-piece bathtub



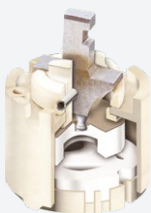
**1965**

The first skid-resistant bathtub



**1969**

Invention of the ceramic disc cartridge



**1979**

The Rimless toilet



**1990**

TopFix



**2000**

Click Technology



**2007**

Markwik



**2011**

IdealBlue®



**2015**

Aquablade®



**2016**

FirmaFlow®



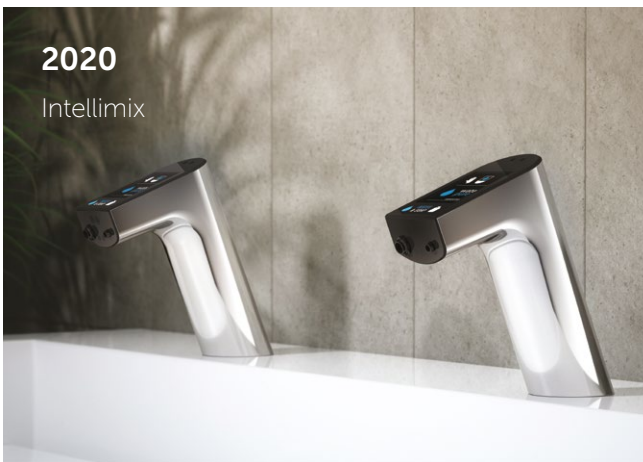
**2017**

Ipalyss®



**2020**

Intellimix



**2023**

Alu+







## Inspiring solutions for tomorrow



Whether it is the latest colour trends, innovative new materials that allow for highly complex designs, or sustainable solutions that help save water, at Ideal Standard we design all products with the needs of our customers in mind. While we can look back on a proud history of pioneering technologies as well as a strong design heritage, we always keep an eye on the future to meet the ever-changing demands of modern living.



# Where it all comes together.

From inspiration to installation, Singular™ is our end-to-end journey for creating cross-category solutions.

It's built on our understanding of customer and sector needs, and brings together our specification expertise, design and performance to create solutions that make life easier for everyone.

Joy  
Free-standing  
bathtub spout



▲  
Linda-X  
Free-standing  
bathtub



◀ Idealrain  
Rainshower  
head

◀ Idealrain  
Stick handspray

▲ Joy  
Shower  
mixer

Mirror ▶

Joy  
Wall mounted  
basin mixer ▶

▲ Linda-X  
Vessel

▲ Conca  
Console &  
basin unit

# Leaders in performance

From comfort and safety, to hygiene, durability and sustainability, excellence in performance makes everything possible.

Combining experience and expertise allows us to push past limitations into new possibilities, and deliver innovations that set a new standard in washrooms and bathrooms. It's ingenuity at its best. It's leadership in performance.

# Aquablade®

**Engineered  
for hygiene.**

Silent, superior, splash-free flushing,  
even at low water volumes.

For spaces where hygiene is paramount,  
and for washrooms where first  
impressions are essential, AquaBlade®  
is the ultimate design solution.

---

## CLEANER

AquaBlade® Technology ensures 95%  
of the surface is cleaned every time.

---

## QUIETER

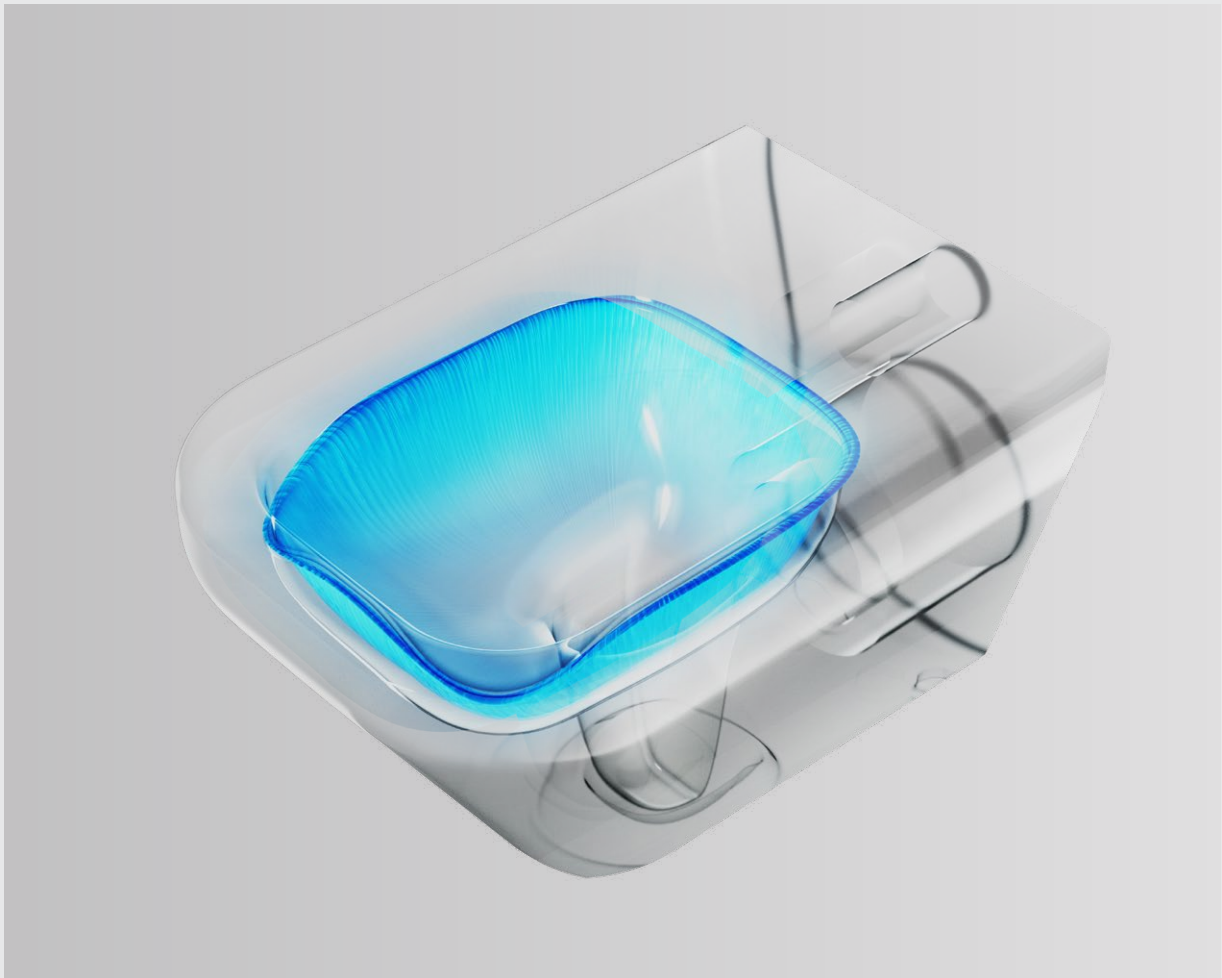
AquaBlade® is proven to be up to  
25% quieter than equivalent models.

---

## SMARTER

More effective and efficient use of  
water compared to standard flushes.

---





---

# RimLS+<sup>®</sup>

**Engineered  
for hygiene.**

With every flush, RimLS+<sup>®</sup> delivers a powerful whole-bowl clean with no place for bacteria to hide. Splashfree and easier to clean, RimLS+<sup>®</sup> is the go-to solution for busy bathrooms.

REGIONAL RESIDENTIAL HOUSE BUILDER

# ProSys®

## Engineered for your peace of mind.

The ProSys® installation system provides complete pre-wall solutions for all washroom fixtures: toilets, bidets and basins. With different products for solid and dry wall applications, ProSys® is ideal for a wide variety of projects. The versatile range combines seamlessly with Ideal Standard's range of ceramics and fittings to ensure optimal performance. With end-to-end quality control and exceeding testing standards, the ProSys® system provides complete peace of mind.



# Engineered to last.

We pioneered the ceramic disc cartridge in 1969 and this innovation redefined the way people used bathrooms and made it possible to create the single lever tap.

As the ultimate development of the original ceramic disc cartridge, some 50 years on, FirmaFlow® is an undisputed market leader with its innovative engineering and extraordinary powers of durability, comfort and control are achieved for twice as long as the industry standard.





# Navigo®

## Engineered for control.

Experiencing ultimate control of water temperature and flow has never been easier with Navigo® supported by the hidden technology of the Easy-box. It's technology you can rely on.

• Sleek, minimalist look for the modern bathroom.

• Single push-button control of temperature and water flow.

• Precise and consistent temperature settings.

## **We engineer our faucets and showers in Germany, assemble and manufacture in Europe.**

They're made of state-of-the-art materials, including dezincification resistant & stress corrosion resistant DZR Brass, high tech zinc-diecast and high performance polymers.



## **We're one of the largest ceramics manufacturers in Europe.**

We use high-tech pressure casting, automated glaze spraying and environmentally efficient kilns. Every product is made using vitreous china and fine fire clay for the highest quality.



**We're pioneers in the acrylic industry since 1986, exporting to more than 45 countries worldwide.**

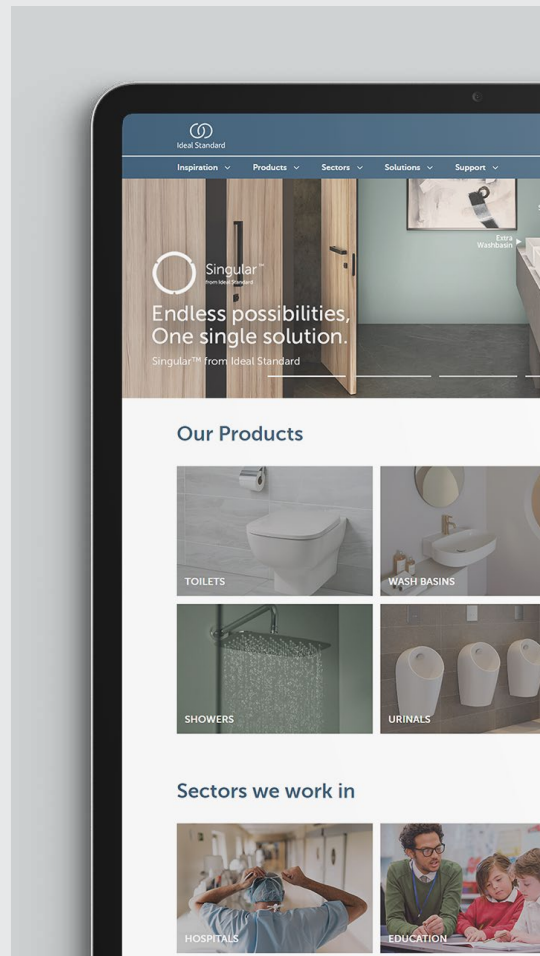
Our UV resistant, highly durable materials ensure colour stability, longevity and prevent bacteria proliferation. All our products have a 25-year guarantee and are NF certified.

# Specification & design support

## An interactive specification system unique to Ideal Standard.

We provide the most comprehensive specification support services of any sanitary ware manufacturer in the UK.

All co-ordinated by a dedicated, experienced and highly knowledgeable Residential Sales Team including KAMs who know the residential sector inside out.



## Leading the way in BIM



**bim  
object**

AWARDS 2020

**WINNER**  
MOST DOWNLOADED  
BRAND DURING 2019

Winner presented at BIMobject® LIVE 2020

[world.bimobject.com](http://world.bimobject.com)

We are consistently one of the most downloaded brands in the UK in terms of BIM objects.

In fact Ideal Standard was named "Most Downloaded Brand" for the second time in four years at the 2020 BIMobject Awards.

These can be downloaded in a variety of formats ranging from PDF datasheets to dedicated project specifications output in NBS clause format.

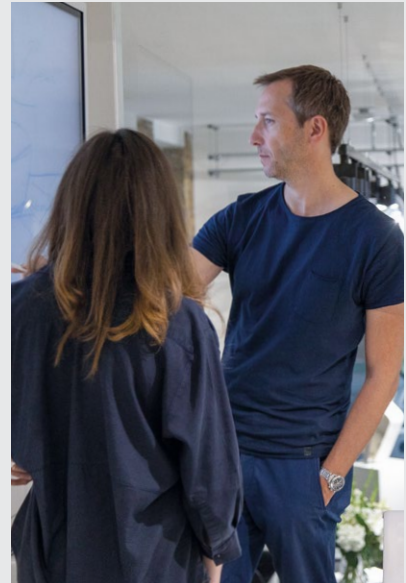
## The Design and Specification Centre is a unique space and resource centre for architects and interior designers.

Located in the heart of London's Clerkenwell, it showcases our latest products and innovations and provides inspiration, information and space to research.

An experienced team is available to offer practical advice in the planning and designing of bathrooms and washrooms for any project from luxury hotels to offices and residential properties.

The Design and Specification Centre provides a relaxed, sales-free environment where you can experience products hands-on, explore different planning options and get practical help with regulations and budget planning.

There is a meeting room to bring your clients to, as well as an area where rooms can be mocked-up for you. We also host a programme of CPD presentations and features on relevant subjects throughout the year. And of course, there's good tea and coffee.

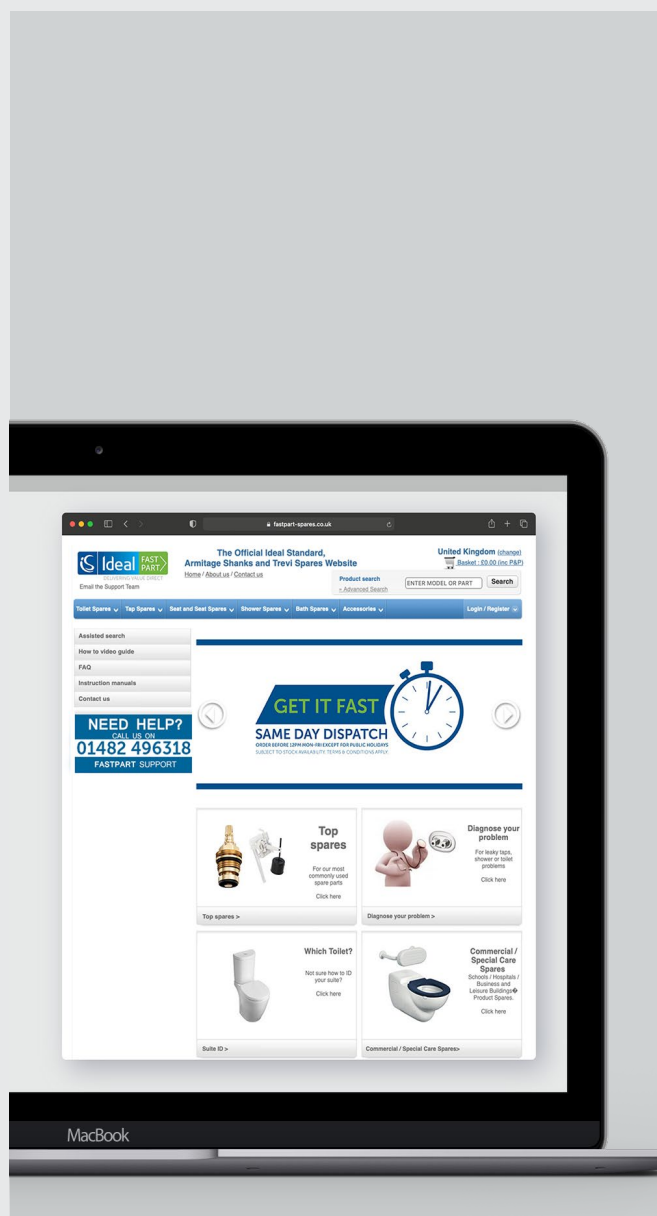




---

## **Our UK based customer teams provide developers access to our extensive knowledge and experience in water delivery.**

Our installation customer care is unrivalled. Our technical teams including engineers, are available on-line, on the phone or when required on-site in person, to advise on the care and maintenance of products before, during and after installation.



## Our commitment to customer care extends well beyond initial sale.

Our dedicated Fastpart-Spares.co.uk site allows specifiers and consumers rapid access to spares ordering 24/7. Plus, support and advice on spares selection is available by phone or email.

As one of the leading  
manufacturers in the  
bathroom industry,  
Ideal Standard has an  
important role to play  
when it come to building  
*a more sustainable future*  
for the benefit of society.

# Our nine commitments

Based on the SDGs most relevant to us, we agreed on nine commitments around which our sustainability programme is centred.

We recognise there is no single big change that we can implement to satisfy the nine commitments we have made. Instead, progress towards fulfilling each of the commitments is to be achieved through the successful execution of a series of step-by-step improvements across our organisation. The cumulative effect of all of these will be meaningful change.

## FOR A BETTER PLANET



### Decarbonise

Committed to actively work towards carbon neutrality.



### Circular economy

Use recyclable and sustainably sourced materials wherever feasible.



### Innovation

Deliver innovative products that encourage sustainable living.

## FOR BETTER LIVES



### Culture

Foster growth in our employees, encouraging social awareness and engagement.



### Equality

Operate a gender and ethnically diverse environment that ensures equality for all.



### Safety

Maintain world class safety standards.

## FOR BETTER BUSINESS



### Customers

Safeguard supply chain resilience and customer satisfaction.



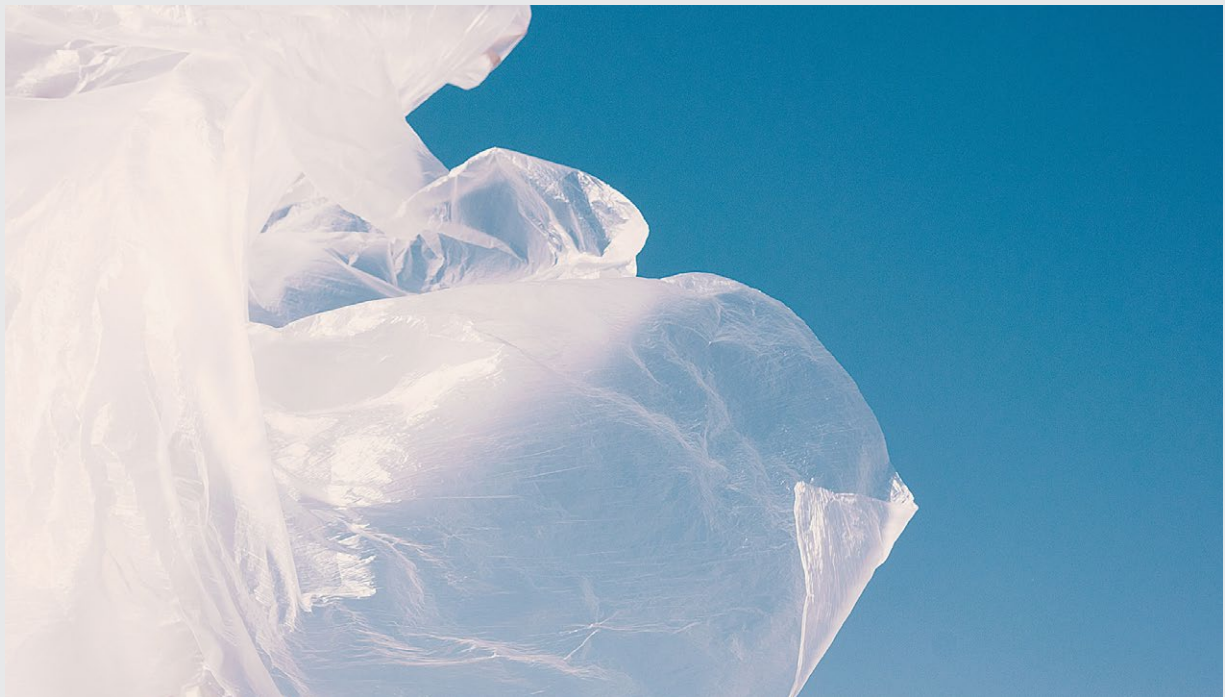
### Suppliers

Robust governance of supplier commitment to Ideal Standard values.



### Transparency

Deliver accurate, transparent and ethical reporting to all stakeholders.



---

## Sustainable Packaging

**We've saved 712 tonnes of plastic since 2019.**

We changed to using 75% recycled plastic in our pallet bags, saving an average of 178 tonnes of plastic each year.

---

**We're saving 170,000kg of plastic each year.**

By removing shrink wrap across ceramic products, we're preserving 170,000kg of plastic.



# Waste Magement & Recycling

Ideal Standard is exploring a wide range of projects to support our zero-waste to landfill initiative.

---



## Creating 240,000 bathtubs from acrylic waste.

All acrylic waste is fully regranulated in a regenerative process. In the last three years we have re-used around 4,000 tonnes of material.



# Gold

## Cloakroom Specification

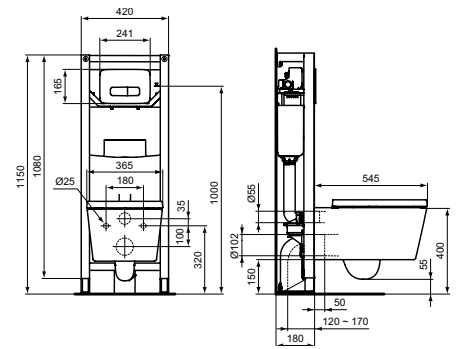
ATELIER

## Gold Specification - Cloakroom

### BLEND CUBE WC WITH PROSYS FRAME & OLEAS FLUSHPLATE



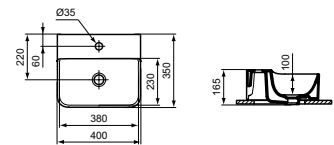
MODEL	SKU
Blend Cube Wall Hung Toilet with Aquablade Technology	<b>T3686--</b>
Blend Cube toilet seat and cover, slow close	<b>T3927--</b>
ProSys 1150mm height, mechanical wall hung WC frame, 120 depth, front actuation	<b>R015367</b>
Oleas M3 mechanical dual flushplate	<b>R0459--</b>
<ul style="list-style-type: none"> <li>Complete specification solution for WC, frame, cistern and flushplate</li> <li>Features AquaBlade® flush technology</li> </ul>	



### CONCA 40CM HANDRINSE BASIN



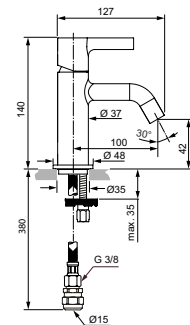
MODEL	SKU
Handrinse basin with overflow - 1 taphole	<b>T3695--</b>
<ul style="list-style-type: none"> <li>Slotted overflow</li> <li>Wall-mounted installation</li> </ul>	



### JOY BASIN MIXER



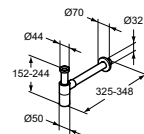
MODEL	SKU
Single lever mini basin mixer	<b>BC802--</b>
<ul style="list-style-type: none"> <li>FirmaFlow® ceramic disc cartridge</li> <li>Available in Chrome and 3 PVD finishes</li> <li>Easyfix® system</li> <li>5 year guarantee</li> </ul>	



### BRUSHED GOLD BOTTLE TRAP



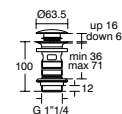
MODEL	SKU
1 1/4" Bottle Trap	<b>T4441--</b>



### BRUSHED GOLD BASIN WASTE



MODEL	SKU
1 1/4" Basin clicker waste: slotted	<b>E1482--</b>
<ul style="list-style-type: none"> <li>'Silent' clicker mechanism reinforces luxury level performance</li> <li>5 year guarantee</li> </ul>	



#### WC & BASIN FINISHES

White - 01    Silk White - V1

#### FLUSH PLATE, MIXER, TRAP & WASTE FINISHES

Chrome - AA    Silver Storm - GN    Brushed Gold - A2    Magnetic Grey - A5

# Gold

## Bathroom Specification

ATELIER



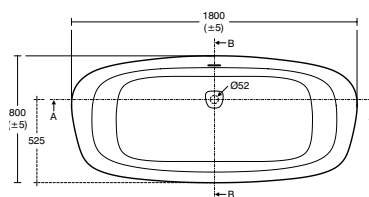


## Gold Specification - Bathroom

## DEA FREESTANDING DOUBLE ENDED BATH & WASTE

MODEL	SKU
180cm x 80cm freestanding double-ended bath with clicker waste and integrated slotted overflow	E306701
Waste cover - Magnetic Grey	LV238A5

- One piece acrylic
- Includes clicker waste and integrated slotted overflow

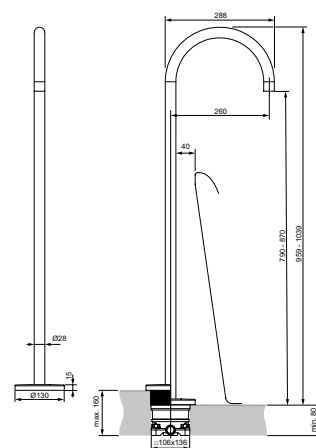


## JOY FREESTANDING BATH SPOUT



MODEL	SKU
Freestanding bath spout	A7387--

- FirmaFlow® ceramic disc cartridge
- Available in Chrome and 3 PVD finishes
- Easyfix system
- 5 year guarantee

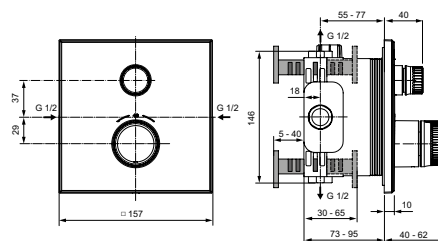


## CERATHERM NAVIGO SHOWER MIXER



MODEL	SKU
Built-in thermostatic 1 outlet square shower mixer	A7301--
Easybox Kit 1	A1000NU

- Available in Chrome and 3 PVD finishes



## BATH SPOUT & SHOWER MIXER FINISHES







# Gold

## Ensuite Specification

ATELIER

REGIONAL RESIDENTIAL HOUSE BUILDER



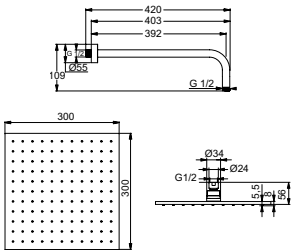
Gold Specification - Ensuite

IDEALRAIN SQUARE 300MM FIXED HEAD & 400MM WALL ARM



MODEL	SKU
Square 300mm fixed rainshower head	A5805--
Horizontal wall arm 400mm	B9445--

- Available in 4 finishes
- Easy clean nozzles to prevent lime scale build-up
- 12 l/min flow restrictor

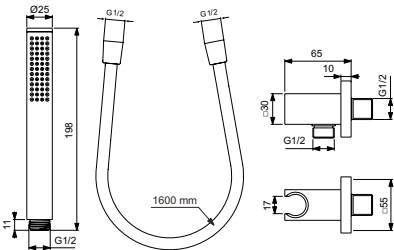


IDEALRAIN HANDSPRAY, HOSE & ELBOW BRACKET



MODEL	SKU
Idealrain single function stick handspray	BC774--
1600mm smooth shower hose	A3330--
Square shower handset bracket	BC771--

- Available in 4 finishes

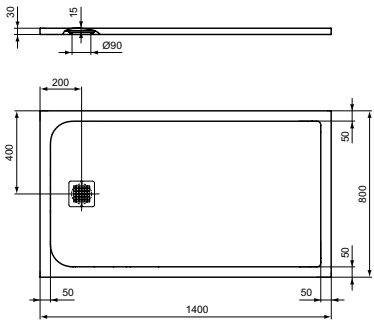


ULTRA FLAT S 1400MM SHOWER TRAY



MODEL	SKU
1400x800x30mm shower tray	K8237--
Idealite top access shower tray waste and trap	L6307AA

- Comes with stainless steel waste grill (other colour finishes available)
- Low profile 30mm height
- Antislip (DIN Class C)
- Bacterial Resistant
- 5 year guarantee

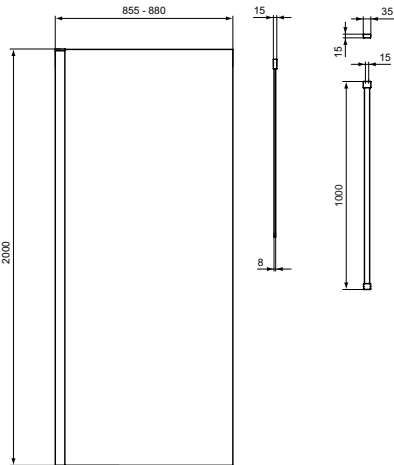


I.LIFE 900 WALK IN PANEL, BRACKET & WASTE



MODEL	SKU
900mm wetroom panel with idealclean clear glass, bright silver finish	T4871EO
1000mm straight bracing bracket, bright silver finish	T4891EO

- 8mm toughened clear safety glass
- IdealClean treatment
- 25mm adjustment
- Unhanded
- 10 year guarantee
- Concealed fixings



IDEALRAIN FINISHES



TRAY FINISHES





# Silver

## Cloakroom Specification

CONNECT AIR



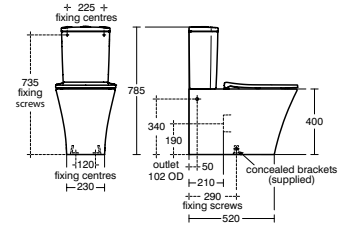
## Silver Specification - Cloakroom

### CONNECT AIR CUBE BACK TO WALL WC



MODEL	SKU
Close coupled bowl / back-to wall with AquaBlade technology - horizontal outlet	<b>E013701</b>
Close coupled cistern with dual flush valve, 6/4 litre	<b>E191801</b>
Wrap style toilet seat and cover, slow close	<b>E081401</b>

- Features AquaBlade® flush technology
- Push button dual flush cistern
- Slow close with quick release seat

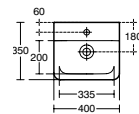


### CONNECT AIR CUBE 40CM HANDRINSE BASIN



MODEL	SKU
Handrinse basin with overflow - 1 taphole	<b>E076901</b>

- 1 hole overflow
- Wall-mounted installation or with pedestal

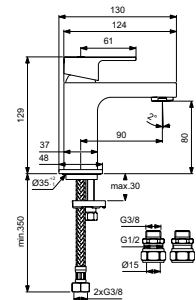


### EDGE BASIN MIXER



MODEL	SKU
Single lever mini basin mixer	<b>A7575AA</b>

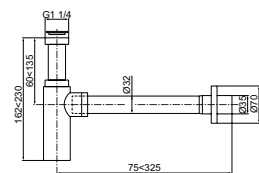
- EasyFix® system
- Suitable for low and high pressure
- 5 litre per minute eco flow regulator fitted
- 5 year guarantee



### CONTEMPORARY BOTTLE TRAP



MODEL	SKU
1 1/4" Contemporary metal bottle, 75mm seal	<b>E0079AA</b>

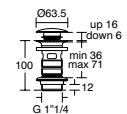


### BASIN WASTE



MODEL	SKU
1 1/4" Basin clicker waste: slotted	<b>E1482--</b>

- 'Silent' clicker mechanism reinforces luxury level performance
- 5 year guarantee



**WASTE FINISHES**

Chrome - AA	Silver Storm - GN	Brushed Gold - A2	Magnetic Grey - A5
-------------	-------------------	-------------------	--------------------

# Silver

## Bathroom Specification

CONNECT AIR



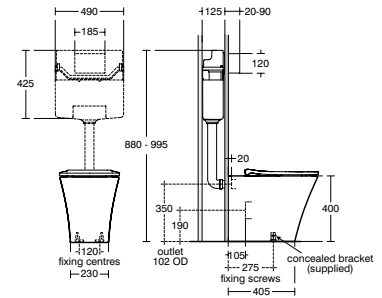
## Silver Specification - Bathroom

## CONNECT AIR WC WITH PROSYS FRAME & OLEAS FLUSHPLATE



MODEL	SKU
Connect Air back-to-wall toilet bowl with horizontal outlet and AquaBlade flush technology	<b>E143201</b>
Toilet seat and cover with quick release, slow close	<b>E081401</b>
ProSys 120 depth WC cistern, mechanical, front actuation	<b>R031767</b>
Oleas M1 mechanical dual flushplate	<b>R0115AA</b>

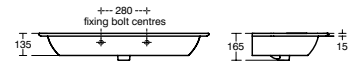
- Complete specification solution for WC, frame, cistern and flushplate
- Features AquaBlade® flush technology



## CONNECT AIR 104CM VANITY WASHBASIN



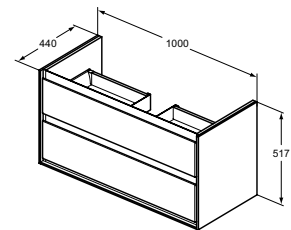
MODEL	SKU
Vanity washbasin with overflow - 1 taphole	E027401
<ul style="list-style-type: none"><li>• 1 hole overflow</li><li>• Wall-mounted installation or with furniture</li></ul>	



## CONNECT AIR 104CM WALL HUNG VANITY UNIT



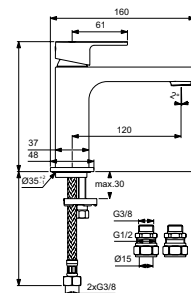
MODEL	SKU
Wall hung vanity unit with 2 drawers in Wood Light Brown and Matt Light Brown	E0821--
<ul style="list-style-type: none"><li>• Soft closing drawers and doors</li><li>• Integrated handle</li><li>• Available in 6 finishes</li></ul>	



## EDGE BASIN MIXER



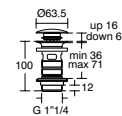
MODEL	SKU
Single lever basin mixer	A7576AA
<ul style="list-style-type: none"><li>• EasyFix® system</li><li>• Suitable for low and high pressure</li><li>• 5 litre per minute eco flow regulator fitted</li><li>• 5 year guarantee</li></ul>	



## BASIN WASTE



MODEL	SKU
1 1/4" Basin clicker waste: slotted	E1482--
<ul style="list-style-type: none"><li>• 'Silent' clicker mechanism reinforces luxury level performance</li><li>• 5 year guarantee</li></ul>	



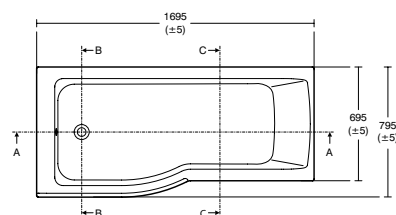
- FLUSH PLATE & WASTE FINISHES**  Chrome - AA  Silver Storm - GN  Brushed Gold - A2  Magnetic Grey - A5
- FURNITURE FINISHES**  Gloss White & Matt White - B2  Gloss Light Grey & Matt White - EQ  Gloss White & Matt Grey - KN  Wood Light Grey & Matt White - PS  Wood Light Brown & Matt Light Brown - UK  Matt Dark Brown & Matt White - VY

## CONNECT AIR 170CM X 80CM SHOWER BATH, PANELS & WASTE



MODEL	SKU
Connect Air 170cm x 80cm Idealform Plus+ shower bath with no tapholes, left hand	E114301
Connect Air 170cm x 80cm Idealform Plus+ shower bath with no taphole, right hand	E114501
Connect Air 170 front panel	E108201
Unilux Plus+ 80cm bath panels	E483101
1 1/2" Luxury bath clicker waste and overflow	E1484AA

- Left and right hand options

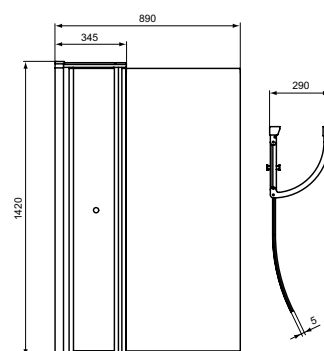


## CONNECT AIR SHOWER BATH SCREEN



MODEL	SKU
Shower bath screen with access panel	E1137EO

- 5mm clear toughened safety glass
- Bright silver finish
- Access panel
- Upto 20mm adjustment
- Unhanded
- Concealed fixings, easy click cover profile and top caps
- Opens inwards and outwards
- 10 year guarantee

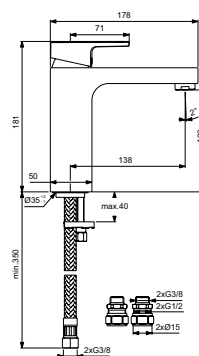


## EDGE BATH FILLER



MODEL	SKU
Single lever 1 hole bath filler	A7579AA

- FirmaFlow® ceramic disc cartridge
- 5 litre per minute eco flow regulator fitted
- Easyfix® system
- 5 year guarantee

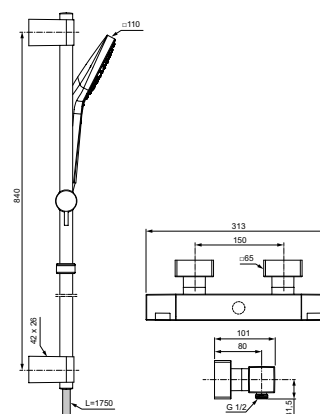


## CERATHERM C100 SHOWER MIXER PACK



MODEL	SKU
Exposed thermostatic shower mixer pack with Idealrain eco diamond 3 function 125mm handspray, 600mm rail and 1.75m Idealflex hose	A7537AA

- FirmaFlow® ceramic disc cartridge
- Cool body technology
- Temperature safety button
- Easy to clean
- 5 year guarantee





# Silver

## Ensuite Specification

CONNECT AIR

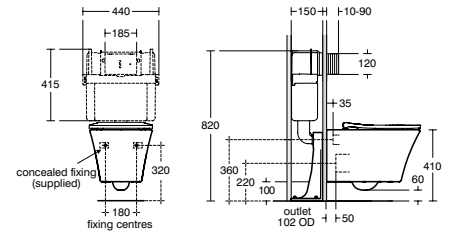


## Silver Specification - Ensuite

### CONNECT AIR WC WITH PROSYS FRAME & OLEAS FLUSHPLATE



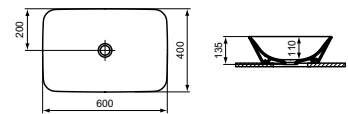
MODEL	SKU
Connect Air wall hung toilet bowl with Aquablade technology	<b>E240401</b>
Toilet seat and cover with quick release, slow close	<b>E081401</b>
ProSys 820mm height, mechanical wall hung WC frame, 150 depth, front or top actuation	<b>R014067</b>
Oleas M1 mechanical dual flushplate	<b>R0115--</b>
<ul style="list-style-type: none"> <li>Complete specification solution for WC, frame, cistern and flushplate</li> <li>Features AquaBlade® flush technology</li> </ul>	



### CONNECT AIR CUBE 60CM VESSEL WASHBASIN



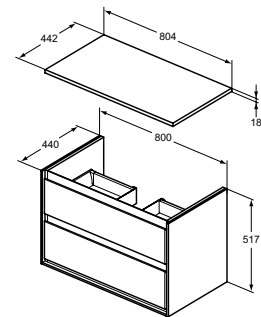
MODEL	SKU
Cube 60cm vessel washbasin, no tapholes	<b>E034801</b>
<ul style="list-style-type: none"> <li>For furniture use</li> <li>Thin ceramic walls</li> </ul>	



### CONNECT AIR 80CM WALL HUNG UNIT



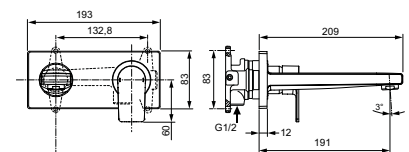
MODEL	SKU
Wall hung vanity unit with 2 drawers in Wood Light Grey & Matt White	<b>E0819--</b>
80cm worktop for vessel installation in Wood Light Grey & Matt White	<b>E0849--</b>
<ul style="list-style-type: none"> <li>Soft closing drawers and doors</li> <li>Integrated handle</li> <li>Available in 6 finishes</li> </ul>	



### EDGE WALL MOUNTED BASIN MIXER



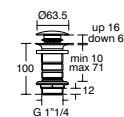
MODEL	SKU
Single lever wall mounted basin mixer	<b>A7116AA</b>
Built-in basin mixer kit 1, horizontal	<b>A5948NU</b>
<ul style="list-style-type: none"> <li>Suitable for low and high pressure</li> <li>5 litre per minute eco flow regulator fitted</li> <li>5 year guarantee</li> </ul>	



### BASIN WASTE



MODEL	SKU
1 1/4" Basin clicker waste: unslotted	<b>E1483--</b>
<ul style="list-style-type: none"> <li>'Silent' clicker mechanism reinforces luxury level performance</li> <li>5 year guarantee</li> </ul>	



#### FLUSH PLATE & WASTE FINISHES

Chrome - AA
  Silver Storm - GN
  Brushed Gold - A2
  Magnetic Grey - A5

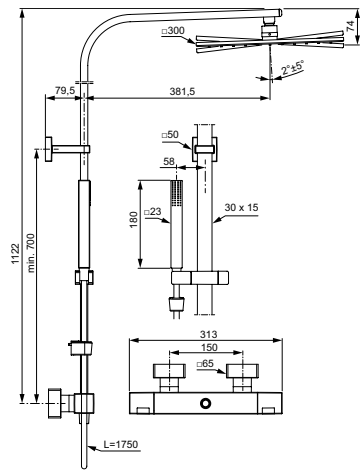
#### FURNITURE FINISHES

Gloss White & Matt White - B2
  Gloss Light Grey & Matt White - EQ
  Gloss White & Matt Grey - KN
  Wood Light Grey & Matt White - PS
  Wood Light Brown & Matt Light Brown - UK
  Matt Dark Brown & Matt White - VY

CERATHERM C100 SHOWER SYSTEM



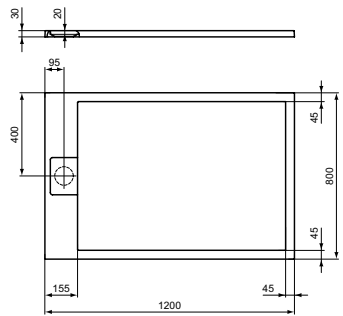
MODEL	SKU
Exposed thermostatic shower system with Idealrain 300mm square rainshower, rectangular riser pipe, single function square stick handspray and 1.75mm Idealflex hose	A7543AA
<ul style="list-style-type: none"><li>FirmaFlow® ceramic disc cartridge</li><li>Cool body technology</li><li>Temperature safety button</li><li>Easy to clean</li><li>5 year guarantee</li></ul>	



ULTRA FLAT S I.LIFE 1200MM SHOWER TRAY



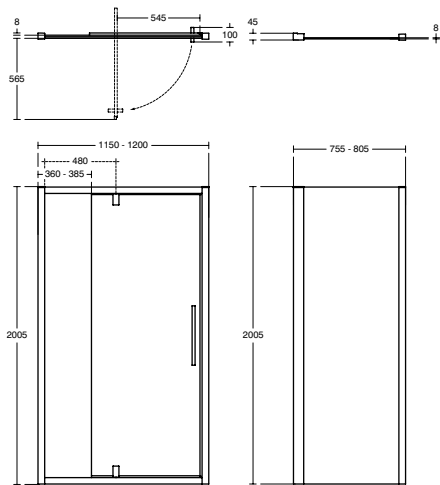
MODEL	SKU
1200x800x30mm shower tray	T5220--
Idealite top access shower tray waste and trap	L6307AA
<ul style="list-style-type: none"><li>Low profile 30mm height</li><li>Stone resin with gel coat finish</li><li>Textured stone finish</li><li>Antislip - EN 16165</li><li>Available in 4 finishes</li><li>Colour matched waste cover included</li></ul>	



I.LIFE PIVOT DOOR 1200MM & 800MM SIDE PANEL



MODEL	SKU
1200mm pivot door with idealclean clear glass, bright silver finish	T4965EO
800mm side panel with idealclean clear glass, bright silver finish	T4915EO
<ul style="list-style-type: none"><li>8mm toughened clear safety glass</li><li>IdealClean treatment</li><li>25mm adjustment per profile</li><li>Chrome plated double handle</li><li>Unhanded</li><li>10 year guarantee</li><li>Concealed fixings</li><li>Power shower proof</li></ul>	

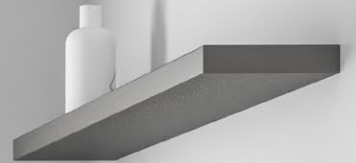




# Bronze

## Cloakroom Specification

I.LIFE

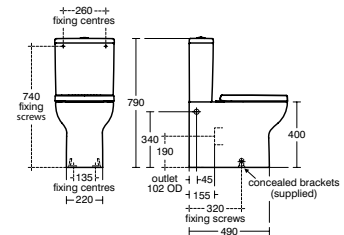


## Bronze Specification - Cloakroom

### I.LIFE A CLOSE COUPLED BACK TO WALL WC

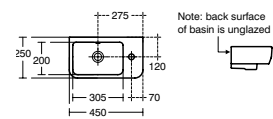
MODEL	SKU
i.life A close coupled back to wall bowl with horizontal outlet and rims+ technology	<b>T481401</b>
i.life A & S close coupled compact cistern 6/4 litre dual flush valve bottom supply and internal overflow	<b>E249101</b>
i.life A & S toilet seat and cover, compact, slow close	<b>T473701</b>

- Rimless flushing technology - RimLS+
- Including fixation set



### I.LIFE S 45CM GUEST WASHBASIN

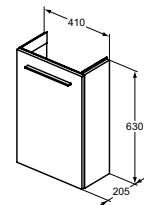
MODEL	SKU
45cm guest washbasin, 1 taphole, right hand	<b>T518601</b>
<ul style="list-style-type: none"><li>• Right taphole</li><li>• 1 hole overflow</li></ul>	



### I.LIFE S 41CM GUEST WASHBASIN UNIT



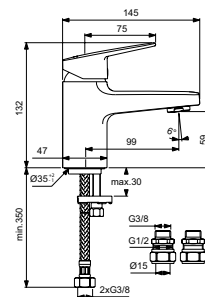
MODEL	SKU
41 cm guest washbasin unit with 1 door	T5296--
i.life 27cm bar handle	T5325XG
<ul style="list-style-type: none"><li>• Compact space saving design</li><li>• Luxury soft close door</li><li>• Two handle finish options</li><li>• Available in five matt and two wood finishes</li></ul>	



## CERAPLAN MINI BASIN MIXER



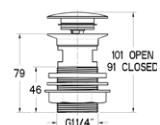
MODEL	SKU
Single lever mini basin mixer	BD208--
<ul style="list-style-type: none"><li>• FirmaFlow® ceramic disc cartridge</li><li>• 5 litre per minute eco flow regulator fitted</li><li>• Easyfix® system</li><li>• 5 year guarantee</li></ul>	



## BASIN WASTE



MODEL	SKU
1 1/4" Basin clicker waste: slotted	S8803AA
<ul style="list-style-type: none"><li>• 'Silent' clicker mechanism reinforces luxury level performance</li><li>• 5 year guarantee</li></ul>	



**FURNITURE FINISHES**

Matt White - DU   Matt Sandy Beige - NF   Matt Quartz Grey - NG   Matt Griege - NH   Matt Carbon Grey - NV   Coffee Oak - NW   Natural Oak - NX

**MINI BASIN MIXER FINISHES**

Chrome - AA   Silk Black - XG

# Bronze

## Bathroom Specification

I.LIFE A

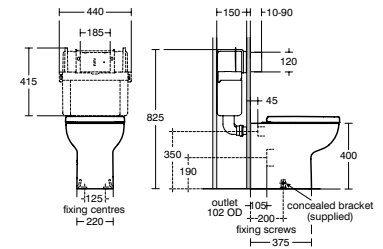


## Bronze Specification - Bathroom

### I.LIFE A WC WITH PROSYS FRAME & OLEAS FLUSHPLATE



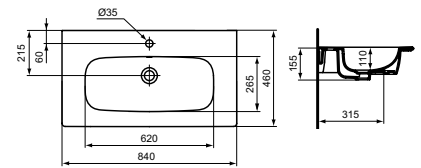
MODEL	SKU
i.life A back to wall wc bowl with horizontal outlet and rimls+ technology	<b>T471901</b>
i.life A toilet seat and cover, slow close	<b>T453101</b>
ProSys 120 depth WC cistern, mechanical, front actuation	<b>R031767</b>
Oleas M3 mechanical dual flushplate	<b>R0123AA</b>
<ul style="list-style-type: none"> <li>Complete specification solution for WC, frame, cistern and flushplate</li> <li>Rimless flushing technology - RimLS+</li> </ul>	



### I.LIFE A 84CM VANITY WASHBASIN



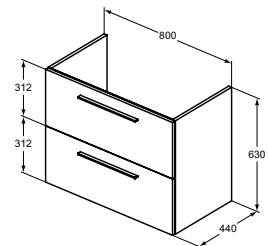
MODEL	SKU
Vanity washbasin with overflow - 1 taphole	<b>T462001</b>
<ul style="list-style-type: none"> <li>Central taphole</li> <li>1 hole overflow</li> </ul>	



### I.LIFE A 80CM WALL HUNG VANITY UNIT



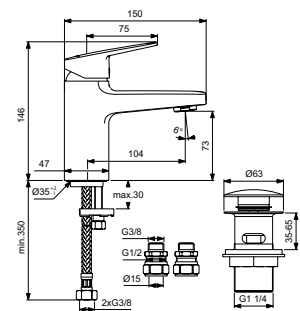
MODEL	SKU
80cm wall hung vanity unit with 2 drawers	<b>T5256--</b>
i.life 34cm bar handle	<b>T5326XG</b>
<ul style="list-style-type: none"> <li>Luxury soft close door</li> <li>Two handle finish options</li> <li>Available in five matt and two wood finishes</li> </ul>	



### CERAPLAN BASIN MIXER



MODEL	SKU
Single lever basin mixer, with click waste	<b>BD246AA</b>
<ul style="list-style-type: none"> <li>FirmaFlow® ceramic disc cartridge</li> <li>5 litre per minute eco flow regulator fitted</li> <li>Easyfix® system</li> <li>5 year guarantee</li> </ul>	



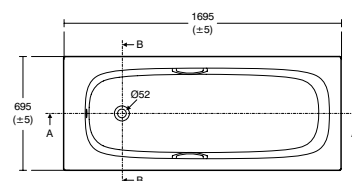
<b>FLUSH PLATE FINISHES</b>	<span>Chrome - AA</span> <span>Silver Storm - GN</span> <span>Brushed Gold - A2</span> <span>Magnetic Grey - A5</span>
<b>FURNITURE FINISHES</b>	<span>Matt White - DU</span> <span>Matt Sandy Beige - NF</span> <span>Matt Quartz Grey - NG</span> <span>Matt Griegie - NH</span> <span>Matt Carbon Grey - NV</span> <span>Coffee Oak - NW</span> <span>Natural Oak - NX</span>

## Bronze Specification - Bathroom

### I.LIFE 170CM X 70CM RECTANGULAR BATH, PANELS & WASTE



MODEL	SKU
i.life 170cm x 70cm rectangular idealform water saving bath with chrome handgrip, no taphole	<b>T478201</b>
Unilux 170cm front panel	<b>E319401</b>
Unilux 70cm end panel	<b>E316901</b>
1 1/2" Luxury bath clicker waste and overflow	<b>E1484AA</b>

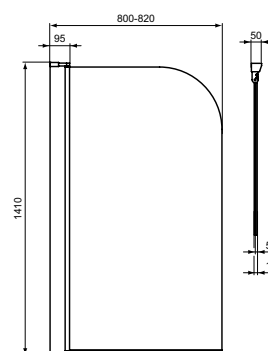


### CONNECT 2 RADIUS BATH SCREEN



MODEL	SKU
Radius bath screen	<b>T9924--</b>

- 5mm clear toughened safety glass
- Up to 20mm adjustment
- Unhanded
- Concealed fixings easy click cover profile and top cap
- Rise and fall hinges
- Inward and outward opening - 180°
- 10 year guarantee

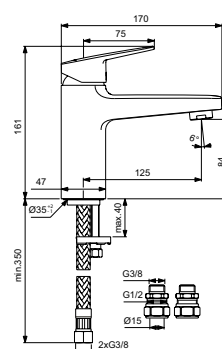


### CERAPLAN BATH FILLER



MODEL	SKU
Single lever 1 hole bath filler	<b>BD266AA</b>

- FirmaFlow® ceramic disc cartridge
- 5 litre per minute eco flow regulator fitted
- Easyfix® system
- 5 year guarantee

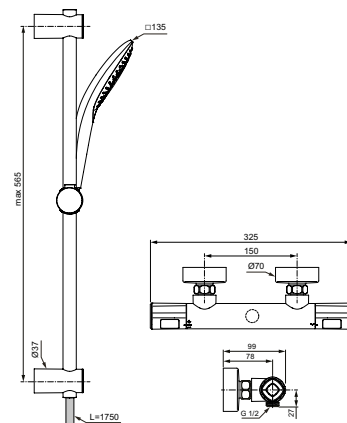


### CERATHERM T100 SHOWER MIXER PACK



MODEL	SKU
Exposed thermostatic shower mixer pack with idealrain evo jet shower kit with 3 function diamond 125mm handspray, 600mm rail and 1.75m idealflex hose	<b>A7237AA</b>

- FirmaFlow® ceramic disc cartridge
- Cool body technology
- Temperature safety button
- Includes hose retaining ring
- 5 year guarantee



#### BATH SCREEN FINISHES

- Chrome - AA
- Silk Black - V3



# Bronze

## Ensuite Specification

I.LIFE A



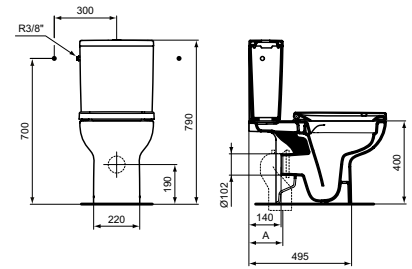
## Bronze Specification - Ensuite

## I.LIFE A CLOSE COUPLED WC



MODEL	SKU
i.life A close coupled wc bowl with horizontal outlet and rims+ technology	T472101
i.life B 4/2.6 litre dual flush valve bottom supply and internal overflow	E248101
i.life A toilet seat and cover, slow close	T453101

- Rimless flushing technology - RimLS+
- Including fixation set

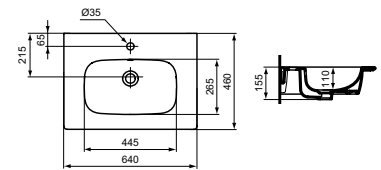


### I.LIFE A 64CM VANITY WASHBASIN



MODEL	SKU
Vanity washbasin with overflow - 1 taphole	<b>T461901</b>

- Central taphole
- 1 hole overflow

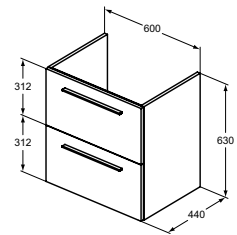


### I.LIFE A 60CM WALL HUNG VANITY UNIT



MODEL	SKU
60cm wall hung vanity unit with 2 drawers	T5255--
i.life 34cm bar handle	T5326XG

- Luxury soft close door
- Two handle finish options
- Available in five matt and two wood finishes

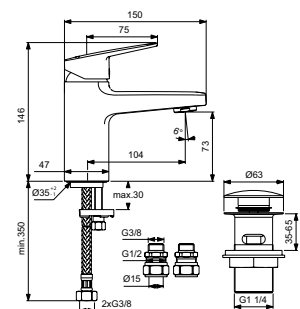


## CERAPLAN BASIN MIXER



MODEL	SKU
Single lever basin mixer, with click waste	BD246AA

- FirmaFlow® ceramic disc cartridge
- 5 litre per minute eco flow regulator fitted
- Easyfix® system
- 5 year guarantee

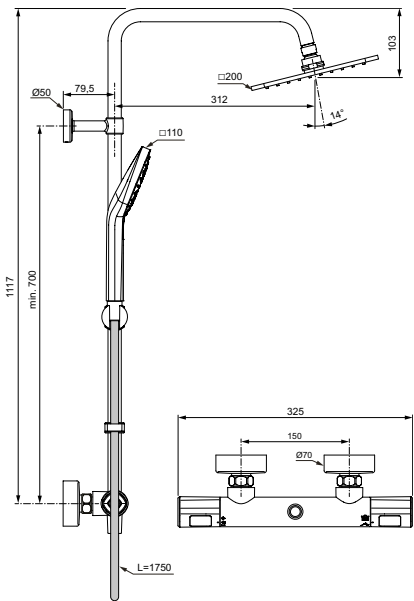


**FURNITURE FINISHES**  Matt White - DU  Matt Sandy Beige - NF  Matt Quartz Grey - NG  Matt Griege - NH  Matt Carbon Grey - NV  Coffee Oak - NW  Natural Oak - NX

CERATHERM T100 SHOWER SYSTEM



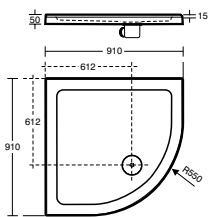
MODEL	SKU
Exposed thermostatic shower system with Idealrain 200mm square rainshower, Idealrain Evo diamond 3 function handspray and 1.75m Ideaflex hose	A7242AA
<ul style="list-style-type: none"><li>FirmaFlow® ceramic disc cartridge</li><li>Cool body technology</li><li>Temperature safety button</li><li>Includes hose retaining ring</li><li>Integrated ceramic diverter to select handspray or showerhead</li><li>5 year guarantee</li></ul>	



SIMPLICITY LOW PROFILE QUADRANT UPSTAND SHOWER TRAY



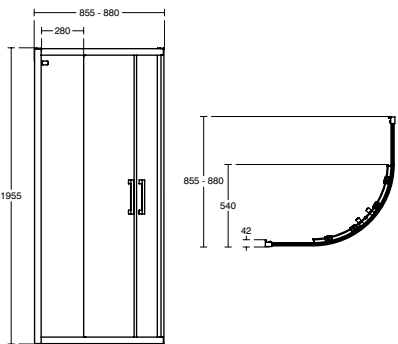
MODEL	SKU
900mm quadrant low profile upstand shower tray including waste with 2 upstands	L512501
<ul style="list-style-type: none"><li>Rigidity &amp; strength</li><li>Low Profile 50mm height (inc upstand)</li><li>Lightweight stone resin</li><li>Flat top or upstand versions available</li><li>ABS capped</li><li>Integral upstand</li><li>Includes 90mm chrome waste and trap</li><li>Suitable for floor standing or riser installations</li><li>25 year guarantee</li></ul>	



CONNECT 2 QUADRANT ENCLOSURE



MODEL	SKU
900 x 900mm Quadrant Enclosure with idealclean clear glass, bright silver finish	K9384EO
<ul style="list-style-type: none"><li>6mm toughened clear safety glass</li><li>IdealClean treatment</li><li>25mm adjustment per profile</li><li>Sleek chrome plated handle</li><li>Click and clean wheels</li><li>Unhanded</li><li>10 year guarantee</li><li>Concealed fixings</li><li>Smooth running wheels</li><li>Power shower proof</li></ul>	





# Gusto

Life happens  
in the kitchen.



Designed with immense attention to detail, the Gusto kitchen taps come in striking square and flowing curved aesthetics as well as a choice of finishes.

For more flexibility the range is available in a wide variety of models including semi-professional and professional options as well as the innovative iMX mixer, featuring an integrated soap dispenser for a neater kitchen worksurface and improved cleanliness.

Gusto is packed with practical features such as EasyFix+ fixation, pull-out spouts and dual spray modes, making the collection stunning to look at, simple to install and easy to use.



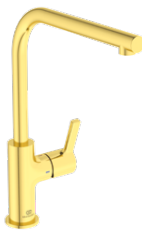
Single lever round C  
spout kitchen mixer  
**SKU BD410--**



Single lever round C pull  
out spout kitchen mixer  
**SKU BD471AA**



Single lever square C  
spout kitchen mixer  
**SKU BD413--**



Single lever L  
spout kitchen  
**SKU BD419--**



Single lever L pull out  
spout kitchen mixer  
**SKU BD473AA**

## KITCHEN TAP FINISHES



Chrome  
- AA



Silver  
Storm - GN



Brushed  
Gold - A2



Magnetic  
Grey - A5



# Ceralook

**Simply beautiful,  
versatile and  
incredibly practical.**

Ceralook combines practicality and elegance in a range of kitchen mixers that leaves nothing more to be desired. Its distinctive design sets the tone in every kitchen.

The comprehensive functionality is provided by numerous different models with low or high mounted spouts, L-spouts as well as a semi-pro model.

Ceralook has many practical and aesthetic features, such as pull-out spouts or colour finishes.



Single lever low spout  
kitchen mixer

**SKU BD571--**



Single lever L-shape spout  
kitchen mixer

**SKU BD572--**



Single lever L-shape spout  
kitchen mixer with pull out spout

**SKU BD573AA**



Single lever semi-pro kitchen  
mixer with 2 function spout

**SKU BD574AA**

## KITCHEN TAP FINISHES



# Guarantee

**Ideal Standard have been producing bathrooms for more than 100 years. Intensive and continuous testing is the key to class-leading durability. Designed to endure the impact of daily use all of our products are guaranteed to perform stylishly and reliably, year after year.**

Our confidence in the quality and reliability of Ideal Standard products enables us to guarantee many of them for a lifetime. Our guarantee is offered on all products that have been used in the manner for which they were intended and does not apply to any products that have been misused or abused in any way. Products must be installed and cared for in line with our fixing instructions and local water by-laws. In the unlikely event the product fails within the guarantee period, we offer a free replacement or replacement part (or nearest equivalent). Liability is limited to individual products and does not cover consequential loss or damage on installation.

For full conditions, please refer to our website:  
**[www.idealspec.co.uk/support/guarantee.html](http://www.idealspec.co.uk/support/guarantee.html)**

Ideal Standard pursue a policy of continuing improvement in design and performance of our products. The right is therefore reserved to vary specifications without notice. While great care has been taken to ensure accuracy of all prices, product codes, descriptions and dimensions, Ideal Standard reserves the right to correct errors or misprints. Colour reproduction is as accurate as possible within the limitations of the printing process.

©Ideal Standard UK Ltd  
P1921(3) 10/23





# Ideal Standard

**Ideal Standard (UK) Ltd**

The Bathroom Works  
National Avenue  
Kingston Upon Hull  
HU5 4HS  
England

01482 346461

[www.idealstandard.co.uk](http://www.idealstandard.co.uk)