

## Sensorflow Wave basin tap 1 hole (mains)

### ILLUSTRATED

**A6161** Sensorflow Wave basin tap 1 hole, mains

### ILLUSTRATED PRODUCT DETAILS

#### Weights

**A6161** 2.20 KG

#### Materials

**A6161** Chrome Plated

#### Finishes

**A6161**  Chrome (AA)

#### Flow rates

**A6161** 3.7 Litres per minute @ 3 bar pressure

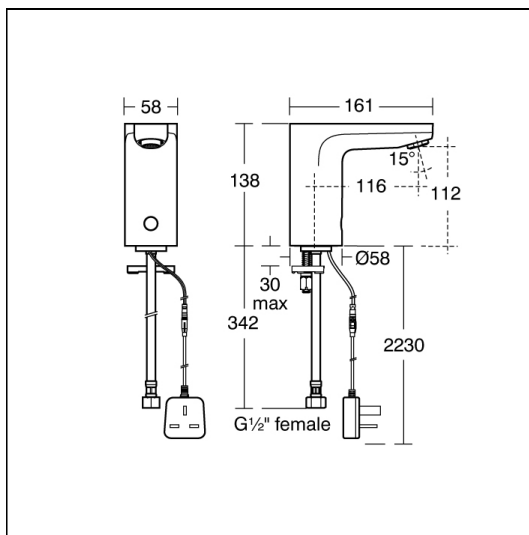
#### Special Notes

Minimum operating pressure 1 bar. Fitted with a proximity sensor which will automatically shut off 2 seconds after sensor no longer detects movement.

Automatic flow stop factory set to operate after 55 seconds of continuous operation. Adjustable duty flush/purge facility.

Consideration should be given to safe hot water delivery and the use of an appropriate temperature reduction device, please see A5900AA (for use with 15mm pipework) or A5901AA (for use with 22mm pipework).

Mains powered Sensorflow products must be connected to a continuous permanent power supply of these require 220-240 volts and each 1 having its own fuse spur.



### ACCREDITATIONS

**A6161(AA)**

Unified  
**Water Label**



**3.70**

Litres  
Per  
Minute

### FEATURES

