

## Markwik 21+ Panel Mounted Thermostatic Basin Mixer, Sequential lever with Removable Spout

### ILLUSTRATED

**A6682** (TB H2A) Markwik 21+ panel mounted thermostatic basin mixer, single sequential lever, demountable with detachable spout

### OPTIONS

**A6899** Markwik 21+ purging kit for panel mounted thermostatic mixers  
**A6255** Inlet protection caps for prolonged demount  
**A6252** (TB H6) 100mm short projection spout

### ILLUSTRATED PRODUCT DETAILS

#### Weights

**A6682** 3.60 KG

#### Finishes

**A6682**  Chrome (AA)

#### Materials

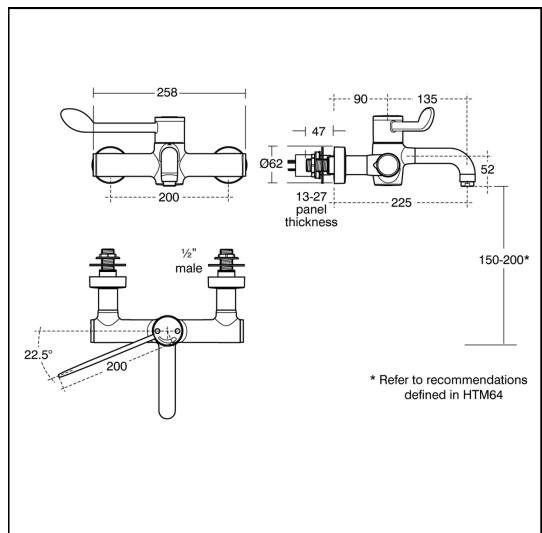
**A6682** Chrome Plated Brass

#### Standards

HTM 04-01 supplement D08, HBN 00-10

#### Special Notes

Minimum 0.6 bar pressure, regulated flow to a maximum of 10 litres per minute. A separate purging kit is available to facilitate installation flushing and water sampling.



### ACCREDITATIONS

### FEATURES

