

Sandringham SL 21 2 hole bath filler

ILLUSTRATED

B3309 Sandringham SL 21 2 hole bath filler

ILLUSTRATED PRODUCT DETAILS

Weights

B3309 1.68 KG

Finishes

B3309  Chrome (AA)

Materials

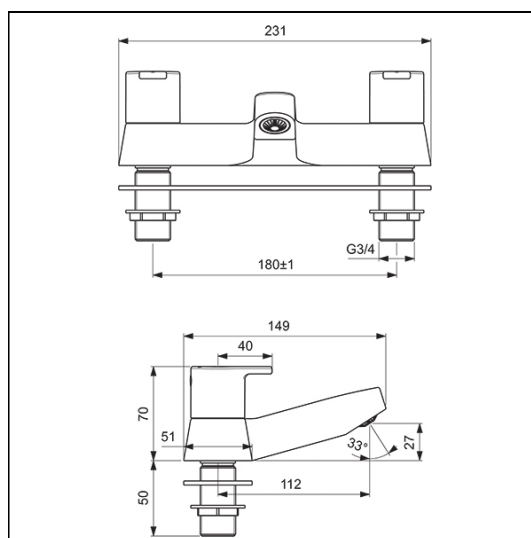
B3309 Chrome Plated Brass

Flow rates

B3309 70 Litres per minute @ 3 bar pressure

Special Notes

High pressure. Easy to operate lever handles. Quarter turn ceramic disc valves. Requires separate TMV for safe bathing, please see A5900AA (for use with 15mm pipework) or A5901AA (for use with 22mm pipework). Unregulated mixed supply flow rate 18 litres per minute at 0.1 bar.



FEATURES

