

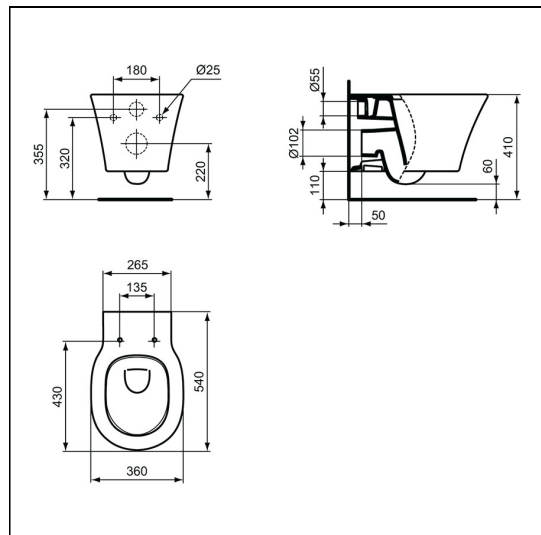
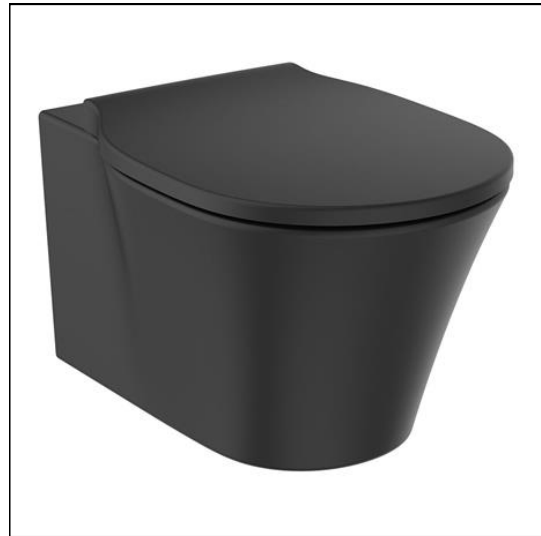
Connect Air Wall Hung Toilet Bowl With Aquablade Technology

ILLUSTRATED

- E0054** Connect Air wall hung toilet bowl with Aquablade technology
- E0368** Connect Air toilet seat and cover with quick release, slow close
- R0115** Oleas M1 mechanical dual flushplate Ideal Standard - black
- R0153** ProSys 1150mm height, mechanical wall hung WC frame, 120 depth, front actuation

OPTIONS

- R0158** ProSys electronic conversion kit for proximity actuated flushplates (Altes & Symfo) (120 depth frames and cisterns only)
- R0176** Prosys conversion kit (front to top actuation) for mechanical 150 depth frames & cisterns (for when using Oleas flushplates)
- S3643** Conceala 2 4.5/3 or 4/2.6 litre cistern, dual flush valve, side supply, internal overflow, alternative height plastic flushbends, no flushplate/button
- E2125** Conceala 2 concealed cistern universal height, side inlet cistern - pneumatic dual flush valve - no flushplate - 6/4 litre flush
- R0116** Oleas P1 pneumatic dual flushplate Ideal Standard - white
- R0121** Oleas M2 mechanical dual flushplate Ideal Standard - white
- R0119** Oleas P2 pneumatic dual flushplate Ideal Standard - white
- R0123** Oleas M3 mechanical dual flushplate Ideal Standard - white
- R0124** Oleas P3 pneumatic dual flushplate Ideal Standard - white
- R0110** Solea P2 pneumatic dual flushplate
- R0130** Altes NT1 electronic (proximity) ceramic dual flushplate Ideal Standard - white
- R0129** Symfo NT1 electronic (proximity) glass dual flushplate Ideal Standard - white
- P0109** Septa Pro XS pneumatic push button no logo - chrome
- R0184** Septa Pro XS pneumatic push button, no logo
- R0100** ProSys half frame for wall hung WC pans (no cistern)
- R0313** ProSys 1150mm height, pneumatic wall hung WC frame, 120 depth, front actuation
- R0140** ProSys 820mm height, mechanical wall hung WC frame, 150 depth, front or top actuation
- R0312** ProSys 820mm height, pneumatic wall hung wc frame 150 depth, front or top actuation
- R0314** ProSys 1150mm height, freestanding mechanical wall hung WC frame, front actuation
- S4300** Panekta outlet connector to convert horizontal outlet wcs to S or turned P trap
- S4305** Panekta outlet connector to convert horizontal outlet wcs to P trap
- E0060** Support frame with bolts for wall mounted toilet bowls



ILLUSTRATED PRODUCT DETAILS

E: info@idealspec.co.uk | T: 0870 122 8822 | F: 0870 122 8282 | www.idealspec.co.uk

Ideal Standard (UK) Ltd. makes every effort to ensure that the information provided on its website is accurate. However, we cannot guarantee this, and accept no liability for any information or advice given via its website.

Connect Air Wall Hung Toilet Bowl With Aquablade Technology





Weights

E0054	22.36 KG
E0368	2.10 KG
R0115	0.34 KG
R0153	12.20 KG

Materials

E0054	Vitreous China
E0368	Plastic
R0115	Mixed Material
R0153	Mixed Material

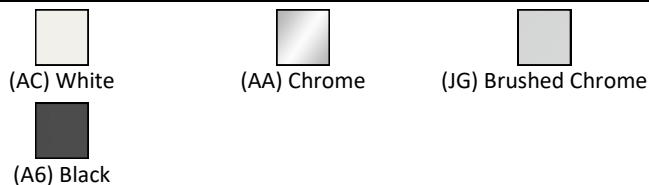
Finishes

E0054		Silk Black (V3)
E0368		Silk Black (V3)
R0115		White (AC)
R0153		Neutral / No Finish (67)

Designer

Robin Levien, RDI

FINISH OPTIONS



Standards

WC bowl to BS EN 997 & BS EN 33

Special Notes

Fix the E0060 support brackets to the floor within the duct and secure the WC with bolts (supplied) and hidden fixing set provided. Screw the bolts to the back wall. Can be used with Concept Space, Concept Air and Tempo furniture WC units. The WC bowl should not be installed with lever activated cistern fitted with a syphon. Oleas, Solea, Altes & Symfo are compatible with Prosys cisterns only. Please see flushplate section for full finish/colour options.