

## ProSys 1150mm height, pneumatic wall hung WC frame

### ILLUSTRATED

- R0313** ProSys 1150mm height, pneumatic wall hung WC frame, 120 depth, front actuation
- R0116** Oleas P1 pneumatic dual flushplate Ideal Standard - chrome

### OPTIONS

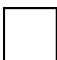
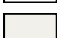
- R0119** Oleas P2 pneumatic dual flushplate Ideal Standard - white
- S0857** Oleas P2 pneumatic dual flushplate Armitage Shanks - chrome
- R0124** Oleas P3 pneumatic dual flushplate Ideal Standard - white
- R0110** Solea P2 pneumatic dual flushplate
- S0775** Septa Pro P1 pneumatic metal dual flushplate Armitage Shanks
- S0860** Septa Pro P2 pneumatic metal dual small flushplate Armitage Shanks
- R0136** Septa Pro P4 pneumatic dual small flushplate with raised adjustable buttons
- P0109** Septa Pro XS pneumatic push button no logo - chrome
- R0184** Septa Pro XS pneumatic push button, no logo
- R0137** Septa Pro inspection plate white
- R0099** ProSys electronic conversion kit for infra-red actuated flushplates (Septa Pro E1 & E2) (120 depth frames and cisterns only)
- R0174** ProSys WC noise insulation kit (avoids contact between WC bowls and tiles)
- R0106** ProSys frame noise insulation kit (avoids direct contact between frame and floor)
- R0199** Prosys horizontal outlet for WC

### ILLUSTRATED PRODUCT DETAILS

#### Weights

- R0313** 12.20 KG
- R0116** 0.38 KG

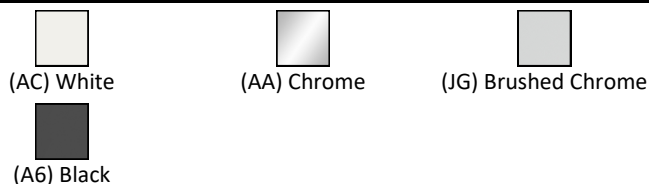
#### Finishes

- R0313**  Neutral / No Finish (67)
- R0116**  White (AC)

#### Materials

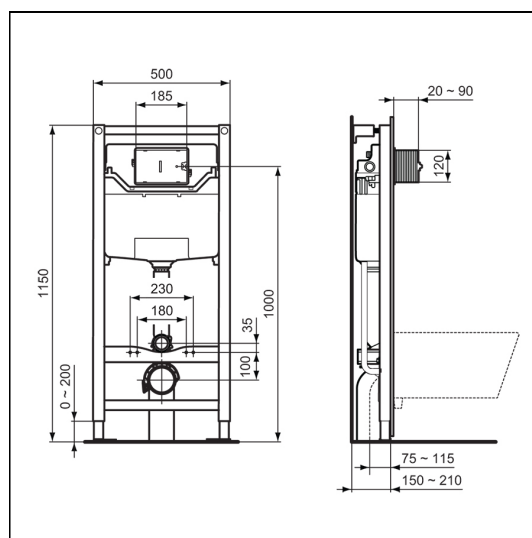
- R0313** Mixed Material
- R0116** Mixed Material

### FINISH OPTIONS



#### Special Notes

Suitable for use with selected Ideal Standard & Armitage Shanks wall hung WC bowls at 6/4 litre or 4.5/3 litre dual flush. For use with Oleas, solea and Septa Pro pneumatic flushplates or Altes/Symfo or Septa Pro electronic plates with the appropriate conversion kit. Please refer to the flushplate instructions to clarify wall thickness before fitting the frame.



### ACCREDITATIONS



### FEATURES

