

Contour 21 Back To Wall Doc M Ambulant - Individual Items

ILLUSTRATED

- S0440** Contour 21+ raised height back-to-wall rimless toilet bowl with raised horizontal outlet and anti-microbial glaze
- S6454** Contour 21 grab rail straight 60cm long x 35mm diameter
- S6452** Contour 21 grab rail straight 45cm long x 35mm diameter
- S5093** Clothes hook screw to wall, plastic
- S3617** Conceala 2 4.5 or 6 litre cistern, single flush syphon, side supply, internal overflow, plastic flushbend and long CP lever
- S4066** Contour 21 toilet seat only, top fixing hinges and retaining buffers

OPTIONS

- S3635** Conceala 2 cistern delay fill 4.5 litre single flush syphon low level bottom supply and internal overflow plastic flushbend, CP lever
- S4065** Contour 21 toilet seat and cover, top fixing hinges

ILLUSTRATED PRODUCT DETAILS





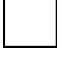

Weights

- S0440** 22.70 KG
- S6454** 2.00 KG
- S6452** 0.62 KG
- S5093** 1.76 KG
- S3617** 3.00 KG
- S4066** 1.55 KG

Materials

- S0440** Vitreous China
- S6454** Aluminium
- S6452** Aluminium
- S5093** Vitreous China
- S3617** Plastic
- S4066** Plastic

Finishes

- S0440**  White with SmartGuard (HY)
- S6454**  White (AC)
- S6452**  White (AC)
- S5093**  White (AC)
- S3617**  Neutral / No Finish (67)
- S4066**  White (01)

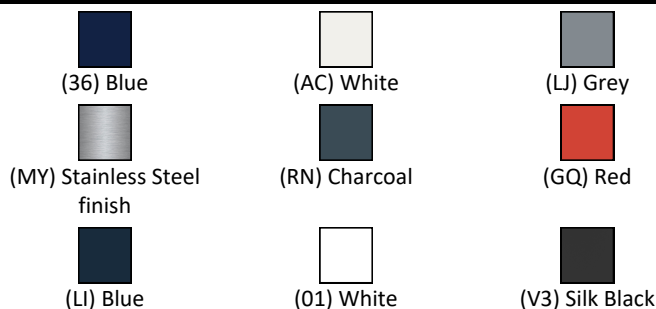
Capacity

- S3617** 4.5 litres

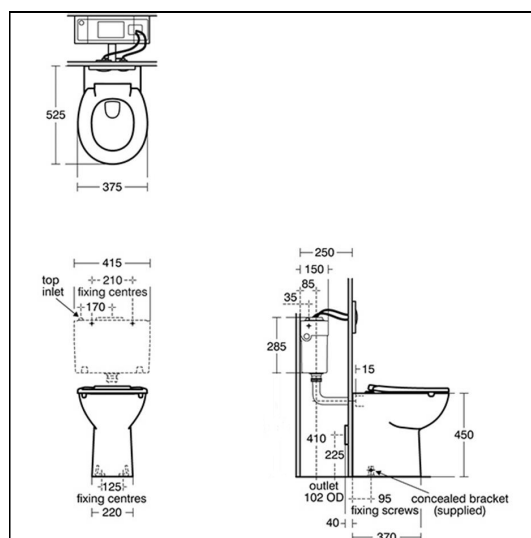
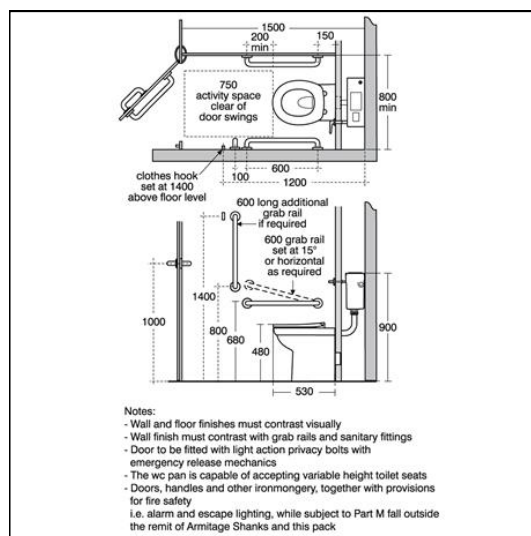
Designer

Robin Levien, RDI


FINISH OPTIONS




Standards



ACCREDITATIONS

S3635(67)
 Unified Water Label  4.5 Average Flushing Volume (Litres)

S3617(67)
 Unified Water Label  4.5 Average Flushing Volume (Litres)

FEATURES



Contour 21 Back To Wall Doc M Ambulant - Individual Items

Special Notes

For LRV and RAL numbers see Doc M introduction.

600mm grab rail S6454 x 3 for room set.

450mm grab rail S6452 for back of door.

White:Ral=9016, LRV=87

Blue:Ral=5011, LRV=6

Red:Ral=3020, LRV=12

Grey:Ral=7005, LRV=19

Charcoal:Ral=7016, LRV=8