

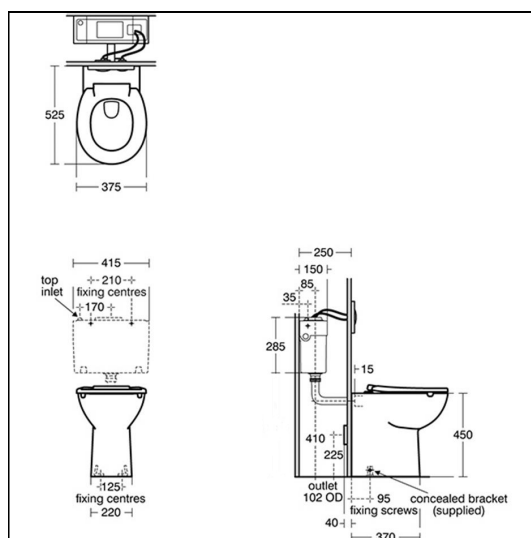
Contour 21+ Raised Height Back-to-Wall Rimless Toilet

ILLUSTRATED

- S0440** (WC H) Contour 21+ raised height back-to-wall rimless toilet bowl with raised horizontal outlet and anti-microbial glaze
- S3617** Conceala 2 4.5 or 6 litre cistern, single flush syphon, side supply, internal overflow, plastic flushbend and long CP lever
- S4066** Contour 21 toilet seat only, top fixing hinges and retaining buffers

OPTIONS

- R0158** ProSys electronic conversion kit for proximity actuated flushplates (Altes & Symfo) (120 depth frames and cisterns only)
- R0099** ProSys electronic conversion kit for infra-red actuated flushplates (Septa Pro E1 & E2) (120 depth frames and cisterns only)
- R0137** Septa Pro inspection plate white
- S3643** Conceala 2 4.5/3 or 4/2.6 litre cistern, dual flush valve, side supply, internal overflow, alternative height plastic flushbends, no flushplate/button
- S3640** Conceala 2 4.5 litre cistern, single flush valve, side supply, internal overflow and alternative height plastic flushbends
- R0317** ProSys 120 depth WC cistern, mechanical, front actuation
- R0318** ProSys 120 depth WC cistern, pneumatic, front actuation
- S4065** Contour 21 toilet seat and cover, top fixing hinges
- E4463** Karisma flush plate, dual flush, unbranded for Conceala 2 cisterns
- S4513** Palm push button pneumatic, stainless steel for 31mm maximum thickness partition
- S0767** Oleas M2 mechanical dual flushplate Armitage Shanks - white
- S0857** Oleas P2 pneumatic dual flushplate Armitage Shanks - chrome
- S0858** Septa Pro M1 mechanical metal dual flushplate Armitage Shanks
- S0859** Septa Pro M2 mechanical metal single flushplate Armitage Shanks
- S0775** Septa Pro P1 pneumatic metal dual flushplate Armitage Shanks
- S0860** Septa Pro P2 pneumatic metal dual small flushplate Armitage Shanks
- R0136** Septa Pro P4 pneumatic dual small flushplate with raised adjustable buttons
- P0109** Septa Pro XS pneumatic push button no logo - chrome
- S0772** Septa Pro E1 electronic (infrared) & manual metal dual flushplate Armitage Shanks
- S0773** Septa Pro E2 electronic (infrared) metal dual flushplate Armitage Shanks
- R0130** Altes NT1 electronic (proximity) ceramic dual flushplate Ideal Standard - white
- R0129** Symfo NT1 electronic (proximity) glass dual flushplate Ideal



FEATURES



Contour 21+ Raised Height Back-to-Wall Rimless Toilet

Standard - white

S4305 Panekta outlet connector to convert horizontal outlet wcs to P trap

S4300 Panekta outlet connector to convert horizontal outlet wcs to S or turned P trap

ILLUSTRATED PRODUCT DETAILS

Weights

S0440 22.70 KG

S3617 3.00 KG

S4066 1.55 KG

Materials

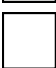
S0440 Vitreous China

S3617 Plastic

S4066 Plastic

Finishes

S0440  White with SmartGuard (HY)

S3617  Neutral / No Finish (67)

S4066  White (01)

Capacity

S3617 4.5 litres

Designer

Robin Levien, RDI

FINISH OPTIONS



(01) White



(36) Blue



(L) Grey



(RN) Charcoal



(GQ) Red



(V3) Silk Black

Standards

WC bowl to BS EN 997 & BS EN 33

Special Notes

WC Pan screwed to floor using concealed brackets (supplied). Oleas, Solea, Altes & Symfo are compatible with Prosys cisterns only. Please see flushplate section for full finish/colour options.