

Care Plus Electric Washbasin Bracket, Vertical and Horizontal Adjustment

ILLUSTRATED

- S0654** Care Plus washbasin mounting electrically operated by lever, vertical and horizontal adjustment
- S0656** Care Plus track 60cm length
- E5499** Concept Freedom 60cm accessible washbasin, one taphole
- S0650** Care Plus flexible 120cm feed and 150cm waste system for sideways adjustment
- BD246** Ceraplan single lever basin mixer, with click waste

ILLUSTRATED PRODUCT DETAILS

Sizes

E5499 w:600 x d:555

Weights

S0654 23.82 KG

S0656 2.10 KG

E5499 14.00 KG

S0650 1.70 KG

BD246 1.77 KG

Materials

S0654 Mixed Material


S0656 Aluminium


E5499 Vitreous China

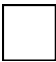
S0650 Mixed Material


BD246 Chrome Plated Brass

Finishes

S0654  Neutral / No Finish (67)

S0656  Neutral / No Finish (67)

E5499  White (01)

S0650  Neutral / No Finish (67)

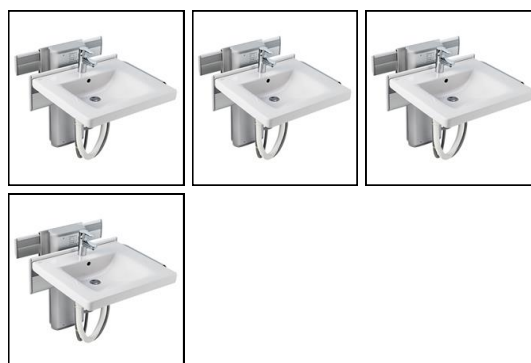
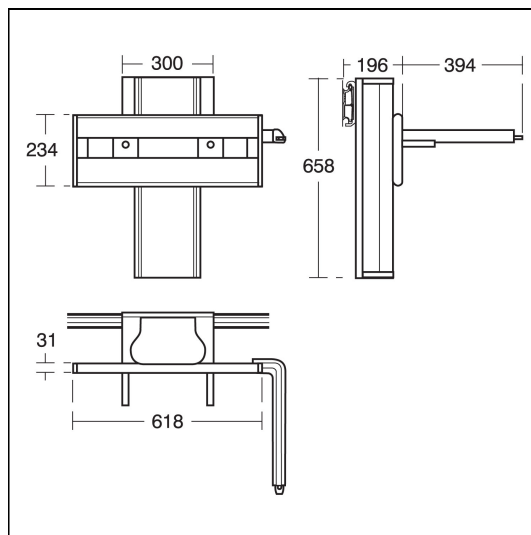
BD246  Chrome (AA)

Capacity

E5499 4.4 litres

Flow rates

BD246 5 Litres per minute @ 3 bar pressure



FEATURES

