

Doc M Contour 21+ Close Coupled Pack RH

ILLUSTRATED

S0684 Doc M Contour 21+ close coupled right hand corner pack, WC pan, water saving delay fill cistern with spatula lever, grab rails, hinged support rail with toilet roll holder, seat no cover with retaining buffers, copper tails on TMV3 mixer tap

ILLUSTRATED PRODUCT DETAILS

Weights

S0684 69.65 KG

Materials

S0684 Mixed Material

Finishes

S0684  White (AC)

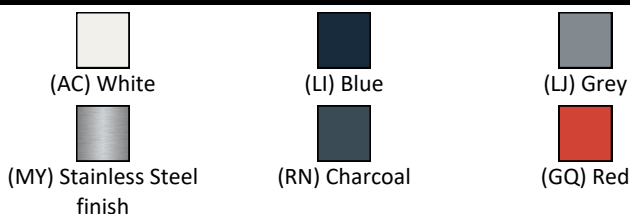
Capacity

S0684 4.5 litres

Flow rates

S0684 4 Litres per minute @ 3 bar pressure

FINISH OPTIONS



Standards

Vitreous china to BS 3402

BS 8300 compliant

Special Notes

Doc M packs are available both right and left hand corner arrangement, the washbasin in the pack is handed so the tap is positioned closest to the seated user. Supplied with layout drawings, detailing the fixing positions necessary for Doc M compliance.

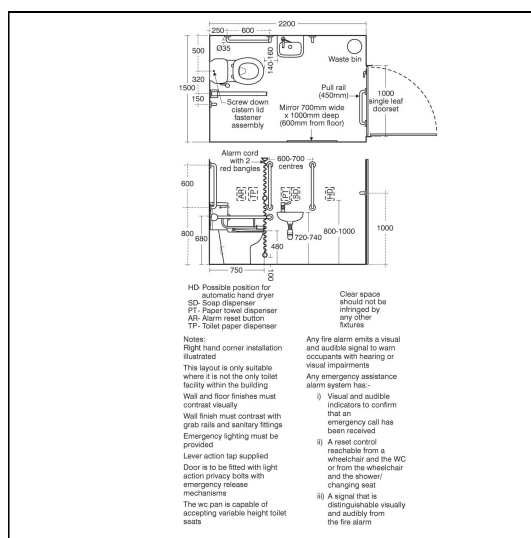
White:Ral=9016, LRV=87

Blue:Ral=5011, LRV=6

Red:Ral=3020, LRV=12

Grey:Ral=7005, LRV=19

Charcoal:Ral=7016, LRV=8



ACCREDITATIONS



FEATURES

