

Doc M Contour 21+ Close Coupled Pack RH & Standing Washbasin

ILLUSTRATED

- S0684** Doc M Contour 21+ close coupled right hand corner pack, WC pan, water saving delay fill cistern with spatula lever, grab rails, hinged support rail with toilet roll holder, seat no cover with retaining buffers, copper tails on TMV3 mixer tap
- S2252** Portman 21 washbasin 50cm, 1 taphole, no overflow or chainstay hole
- E0157** Wall fixing set
- A6697** Contour 21+ 1 hole thermostatic basin mixer, single sequential lever with copper tails
- S8734** Waste 1¼" brass swivel plug waste, 80mm unslotted tail
- S8910** Trap 1¼" plastic bottle, 75mm seal, multi-purpose outlet
- S6454** Contour 21 grab rail straight 60cm long x 35mm diameter

ILLUSTRATED PRODUCT DETAILS

Sizes

S2252 w:50 x d:42






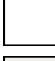
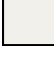
Weights

- S0684** 69.65 KG
- S2252** 12.73 KG
- E0157** 0.16 KG
- A6697** 2.10 KG
- S8734** 0.35 KG
- S8910** 0.20 KG
- S6454** 2.00 KG

Materials

- S0684** Mixed Material
- S2252** Vitreous China
- E0157** Metal
- A6697** Chrome Plated Brass
- S8734** Chrome Plated Metal
- S8910** Plastic
- S6454** Aluminium

Finishes

- S0684**  White (AC)
- S2252**  White (01)
- E0157**  Neutral / No Finish (67)
- A6697**  Chrome (AA)
- S8734**  Chrome (AA)
- S8910**  Neutral / No Finish (67)
- S6454**  White (AC)

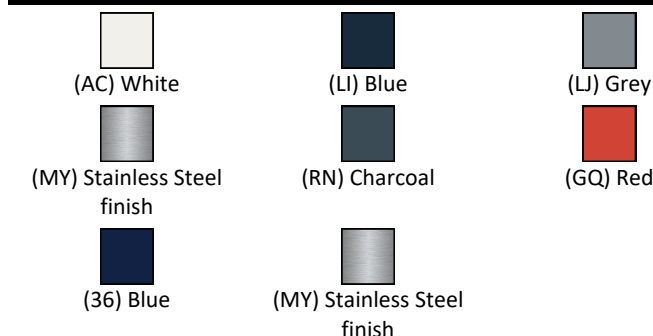
Capacity

S0684 4.5 litres

Flow rates

- S0684** 4 Litres per minute @ 3 bar pressure
- A6697** 3.9 Litres per minute @ 3 bar pressure

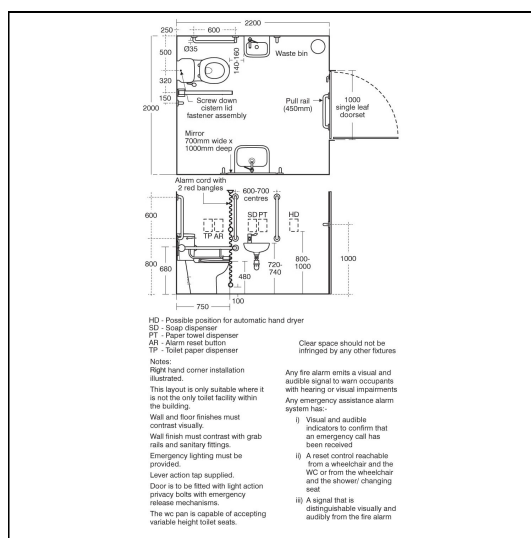
FINISH OPTIONS



Standards

E: info@idealspec.co.uk | T: 0870 122 8822 | F: 0870 122 8282 | www.idealspec.co.uk

Ideal Standard (UK) Ltd. makes every effort to ensure that the information provided on its website is accurate. However, we cannot guarantee this, and accept no liability for any information or advice given via its website.



ACCREDITATIONS



FEATURES



Doc M Contour 21+ Close Coupled Pack RH & Standing Washbasin

Vitreous china to BS 3402.

BS 8300 compliant

Special Notes

This assembly comprises a Unisex wheelchair accessible facility with corner WC, finger rinse washbasin and an additional standing height washbasin fixed at 780-800mm from floor to front rim. Doc M packs are available both right and left hand corner arrangement, the washbasin in the pack is handed so the tap is positioned closest to the seated user. Supplied with layout drawings, detailing the fixing positions necessary for Doc M compliance. Contour 21 mixer A6697(AA) to TMV3.

White:Ral=9016, LRV=87

Blue:Ral=5011, LRV=6

Red:Ral=3020, LRV=12

Grey:Ral=7005, LRV=19

Charcoal:Ral=7016, LRV=8