

Doc M Standard Pack LH

ILLUSTRATED

S0689 Doc M Standard low level left corner pack, WC with spacer box low level cistern, grab rails, hinged support rail with toilet roll holder, seat no cover with retaining buffers

ILLUSTRATED PRODUCT DETAILS

Weights

S0689 70.00 KG

Finishes

S0689  White (AC)

Materials

S0689 Mixed Material

Capacity

S0689 6.0 litres

Flow rates

S0689 4 Litres per minute @ 3 bar pressure

FINISH OPTIONS



Standards

Vitreous china to BS 3402

BS 8300 compliant

Special Notes

Doc M packs are available both right and left hand corner arrangement, illustrated is left hand arrangement.

Supplied with layout drawings, detailing the fixing positions necessary for Doc M compliance.

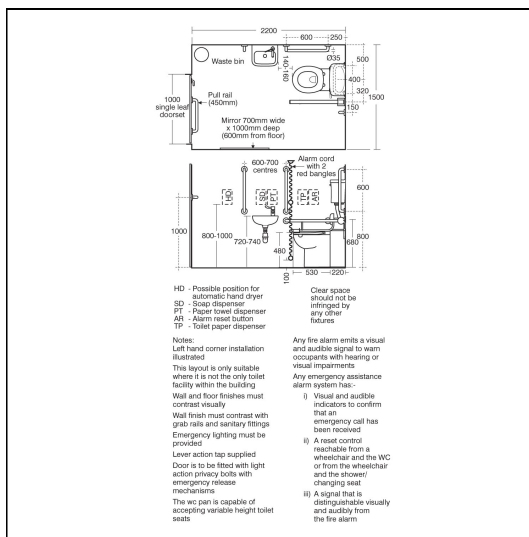
White:Ral=9016, LRV=87

Blue:Ral=5011, LRV=6

Red:Ral=3020, LRV=12

Grey:Ral=7005, LRV=19

Charcoal:Ral=7016, LRV=8



ACCREDITATIONS



FEATURES

