

ILLUSTRATED

S0825	Edit Assist Back to Wall Raised Height WC Pan
S3326	Conceala 3 dual flush 6/4 litre cistern, side inlet, pneumatic actuation, easy adjustable to low water volumes (4.5/3 or 4/2.6 litres), internal overflow, flushpipe included, no button/flushplate
E7917	Concept toilet seat and cover, slow close
E4463	Karisma pneumatic flush plate, dual flush, unbranded for Conceala 3 cisterns

R0099	ProSys electronic conversion kit for infra-red actuated flushplates (Septa Pro E1 & E2) (120 depth frames and cisterns only)
R0317	ProSys 120 depth WC cistern, mechanical, front actuation
K7060	Concept toilet seat only
S0767	Oleas M2 mechanical dual flushplate Armitage Shanks - chrome
S0858	Septa Pro M1 mechanical metal dual flushplate Armitage Shanks
S0772	Septa Pro E1 electronic (infrared) & manual metal dual flushplate Armitage Shanks
S0773	Septa Pro E2 electronic (infrared) metal dual flushplate Armitage Shanks





Weights

S0825	32.70 KG
S3326	2.70 KG
E7917	2.30 KG
E4463	0.20 KG

Materials

S0825	Vitreous China
S3326	Plastic
E7917	Plastic
E4463	Chrome Plated Plastic

Finishes

S0825		White (01)
S3326		Neutral/No Finish (67)
E7917		White (01)
E4463		Chrome (AA)

Designer

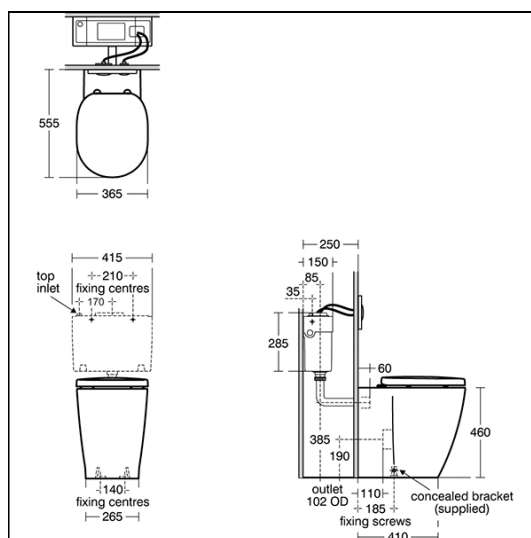
Robin Levien, RDI

Standards

Vitreous china to BS3402. WC pan to BS EN 997 and BS EN 38

Special Notes

WC bowl screwed to floor using concealed brackets (supplied). The WC bowl should not be installed with a lever activated cistern fitted with syphon. Oleas, Solea, Altes & Symfo are compatible with Prosys cisterns only. Please see flushplate section for full finish/colour options.



FEATURES

