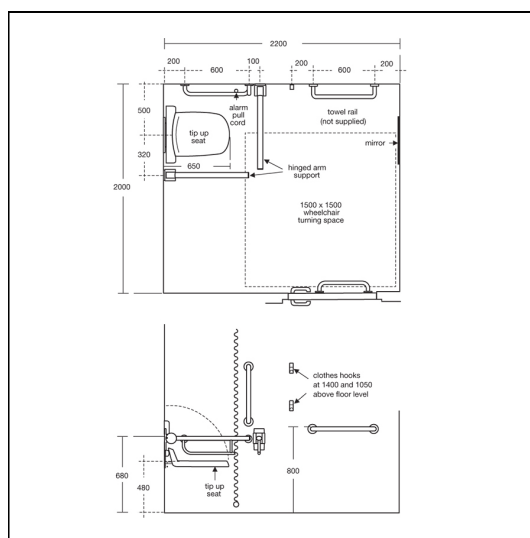
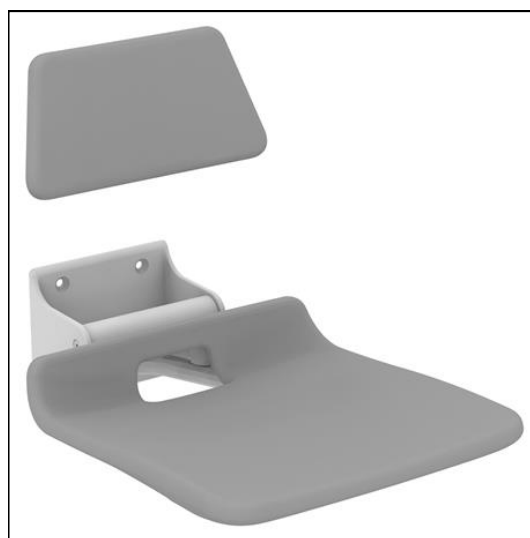


# Doc M Shower Room - Individual Items

## ILLUSTRATED

- S1207** Folding, fixed height shower seat with 650mm projection
- S1208** Multi-System back support, fixed height
- E4745** Idealrain Ultraflex 1.35m shower hose, DN10
- L6919** Lever operated shower diverter
- S6750** Multi-System shower curtain 1500x2000mm
- S6751** Contour 21 angled shower curtain rail 1200 x 1200mm
- S5093** Clothes hook screw to wall, plastic
- S6454** Contour 21 grab rail straight 60cm long x 35mm diameter
- S6452** Contour 21 grab rail straight 45cm long x 35mm diameter
- S6360** Contour 21 hinged support rail 80 x 35mm diameter, Doc M Compliant
- S6477** Contour 21 shower handset holder, sliding
- A4129** Contour 21 thermostatic built-in shower mixer, lever operated
- S9313** Short projection shower head for concealed or exposed supply
- B9304** Armaglide 2 handspray, single function
- B1364** Category 5 hose retainer for wall fixing which screws to the wall to limit handspray movement, to prevent back siphonage in category 5 installations
- E4705** Wall elbow



## ILLUSTRATED PRODUCT DETAILS

### Weights

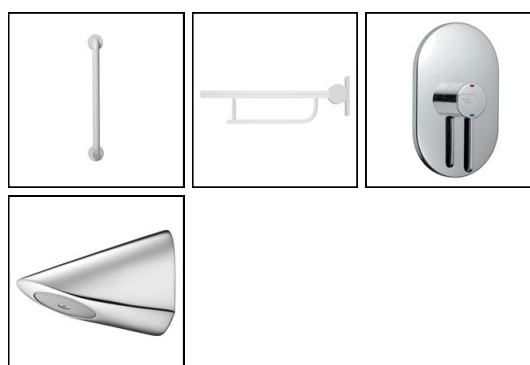
- S1207** 7.42 KG
- S1208** 2.06 KG
- E4745** 0.21 KG
- L6919** 0.82 KG
- S6750** 0.42 KG
- S6751** 2.00 KG
- S5093** 1.76 KG
- S6454** 2.00 KG
- S6452** 0.62 KG
- S6360** 3.15 KG
- S6477** 2.30 KG
- A4129** 3.10 KG
- S9313** 2.21 KG
- B9304** 0.30 KG
- B1364** 0.10 KG
- E4705** 0.17 KG

### Finishes

- S1207**  Grey (XK)
- S1208**  Grey (XK)
- E4745**  Chrome (AA)
- L6919**  Chrome (AA)
- S6750**  White (01)
- S6751**  White (AC)
- S5093**  White (AC)
- S6454**  White (AC)
- S6452**  White (AC)
- S6360**  White (AC)
- S6477**  White (AC)
- A4129**  Chrome (AA)
- S9313**  Chrome (AA)
- B9304**  Chrome (AA)

### Materials

- S1207** Mixed Material
- S1208** Mixed Material
- E4745** Plastic
- L6919** Chrome Plated Brass
- S6750** Mixed Material
- S6751** Mixed Material
- S5093** Vitreous China
- S6454** Aluminium
- S6452** Aluminium
- S6360** Aluminium
- S6477** Plastic
- A4129** Chrome Plated Brass
- S9313** Chrome Plated Brass



## ACCREDITATIONS

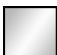

### A4129(AA)

Unified Water Label  7.50 Litres Per Minute

### B9304(AA)

Unified Water Label  8.00 Litres Per Minute

## Doc M Shower Room - Individual Items

<b>B9304</b>	Chrome Plated Plastic	<b>B1364</b>		Chrome (AA)
<b>B1364</b>	Chrome Plated Plastic	<b>E4705</b>		Chrome (AA)
<b>E4705</b>	Chrome Plated Metal			

### Flow rates









<b>A4129</b>	7.5 Litres per minute @ 3 bar pressure
<b>B9304</b>	8 Litres per minute @ 3 bar pressure



### FEATURES



### FINISH OPTIONS

		
(AC) White	(36) Blue	(LI) Blue
		
(LJ) Grey	(MY) Stainless Steel finish	(RN) Charcoal
		
(GQ) Red	(AA) Chrome	

### Special Notes

For LRV and RAL numbers see Doc M introduction. 600mm grab rail S6484 x 3 for room set.  
 450mm grab rail S6486 is for back of door.  
 Contour 21 shower valve A4129(AA) to TMV3