

Stirling Bi Slophopper, RH Hopper

ILLUSTRATED

S1300	(DU H) Stirling right hand back inlet slop hopper with work surface
S4663	Flushpipe 850 x 35mm diameter for slop hopper
B1684	Nimbus 21 1/2" x 100mm bib tap extensions (pair)
S1085	Conceala 3 pneumatic palm push button
S3331	Conceala 3 high level single flush 6 litre cistern, side inlet, pneumatic actuation, internal overflow, no push button
S3584	P trap outlet, plastic for slop hoppers
S8270	(TB H1) Markwik 1/2" lever action bib taps
B1686	Nimbus 21 concealed bib tap wall mount with self centralising installation (pair)

OPTIONS

S9281	Leg 900mm stainless steel to floor (2 required)
--------------	---

ILLUSTRATED PRODUCT DETAILS


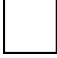






Weights

S1300	14.00 KG
S4663	2.00 KG
S1085	0.08 KG
S3331	2.30 KG
S3584	0.26 KG
S8270	1.65 KG

Materials

S1300	Stainless Steel
S4663	Plastic
B1684	Chrome Plated Brass
S3331	Plastic
S3584	Plastic
S8270	Chrome Plated Brass
B1686	Chrome Plated Brass

Finishes

S1300	 Stainless Steel (MY)
S4663	 Neutral/No Finish (67)
B1684	 Chrome (AA)
S1085	 Chrome (AA)
S3331	 Neutral/No Finish (67)
S3584	 White (01)
S8270	 Chrome (AA)
B1686	 Chrome (AA)

FINISH OPTIONS

 (AA) Chrome

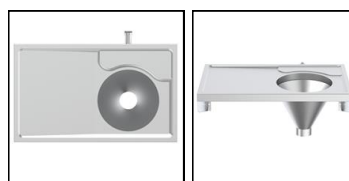
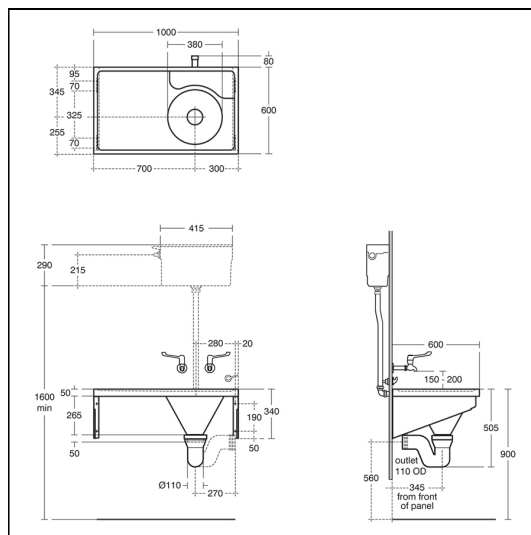
 (MY) Stainless Steel

Standards

Manufactured from 1.2mm 1.4301 (304) Stainless Steel sheet, conforms to BS EN 10088: Part 2: 2005. NHS specification HBN 00-10. EN 13310.

Special Notes

Note HTM64 does not cover for the provision of leg supports to floor



FEATURES

