

# Stirling Bi Slophopper, LH Hopper

## ILLUSTRATED

- S1301** (DU H) Stirling left hand back inlet slop hopper with work surface
- S4663** Flushpipe 850 x 35mm diameter for slop hopper
- B1684** Nimbus 21 1/2" x 100mm bib tap extensions (pair)
- S1085** Conceala 3 pneumatic palm push button
- S3331** Conceala 3 high level single flush 6 litre cistern, side inlet, pneumatic actuation, internal overflow, no push button
- S3584** P trap outlet, plastic for slop hoppers
- S8270** (TB H1) Markwik 1/2" lever action bib taps
- B1686** Nimbus 21 concealed bib tap wall mount with self centralising installation (pair)

## OPTIONS

- S9281** Leg 900mm stainless steel to floor (2 required)

## ILLUSTRATED PRODUCT DETAILS


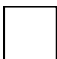


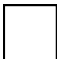
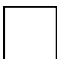


### Weights

- S1301** 14.00 KG
- S4663** 2.00 KG
- S1085** 0.08 KG
- S3331** 2.30 KG
- S3584** 0.26 KG
- S8270** 1.65 KG

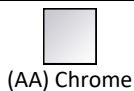
### Materials

- S1301** Stainless Steel
- S4663** Plastic
- B1684** Chrome Plated Brass
- S3331** Plastic
- S3584** Plastic
- S8270** Chrome Plated Brass
- B1686** Chrome Plated Brass

### Finishes

- S1301**  Stainless Steel (MY)
- S4663**  Neutral/No Finish (67)
- B1684**  Chrome (AA)
- S1085**  Chrome (AA)
- S3331**  Neutral/No Finish (67)
- S3584**  White (01)
- S8270**  Chrome (AA)
- B1686**  Chrome (AA)

## FINISH OPTIONS

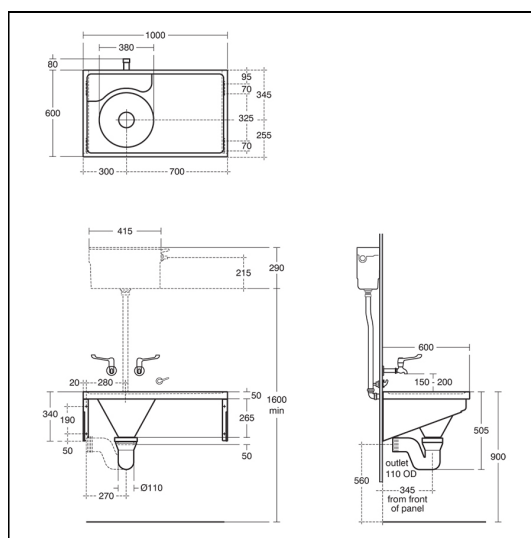


### Standards

Manufactured from 1.2mm 1.4301 (304) Stainless Steel sheet, conforms to BS EN 10088: Part 2: 2005. NHS specification HBN 00-10. EN 13310.

### Special Notes

Note HTM64 does not cover for the provision of leg supports to floor



## FEATURES

