

Doc M Bathroom - Individual Items

ILLUSTRATED

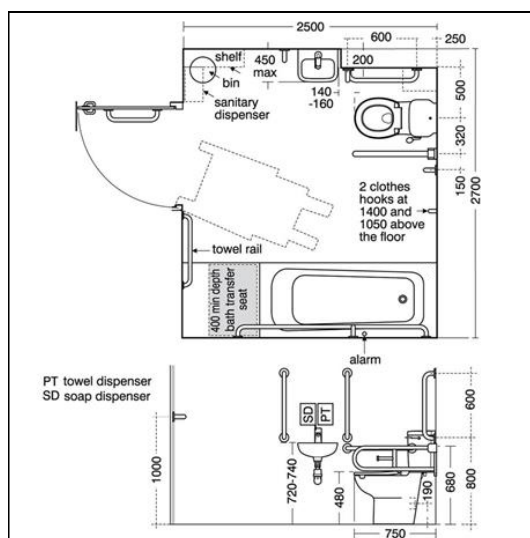
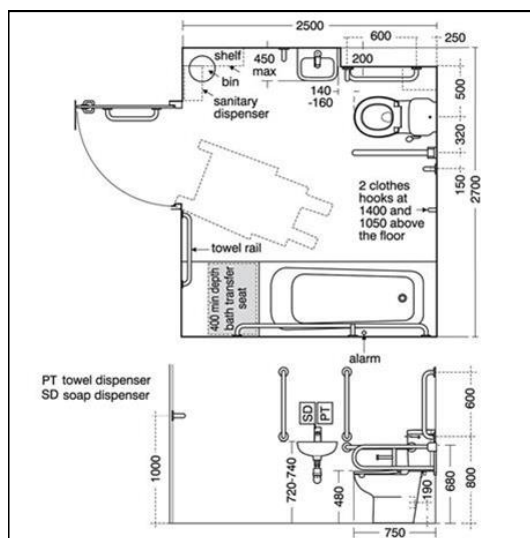
- S1699** Nisa Lowline 170cm x 70cm steel bath, anti-slip, no tap holes
- S3054** Contour 21 close coupled raised height toilet bowl with horizontal outlet, 75cm projection with floor fixing kit
- S3654** Contour 21 close coupled 4.5 litre delay fill single flush syphon cistern for 75cm projection bowl, bottom supply, internal overflow with spatula lever (reversible) and secure cover fastener
- S4066** Contour 21 toilet seat only, top fixing hinges and retaining buffers
- S2311** Portman 21 washbasin 50cm, 1 taphole with overflow, no chainstay hole
- E0157** Wall fixing set
- S8733** Waste 1½" brass anti theft swivel plug waste, 80mm slotted tail
- S6454** Contour 21 grab rail straight 60cm long x 35mm diameter
- S6360** Contour 21 hinged support rail 80 x 35mm diameter, Doc M Compliant
- S6363** Toilet roll holder for Contour 21 hinged arm rail
- S6452** Contour 21 grab rail straight 45cm long x 35mm diameter
- A7005** Contour 21+ thermostatic wall mounted bath filler with thermal cleanse feature and fast fix wall bracket
- S8830** Waste 1½" bath chain and overflow, plastic plug

OPTIONS

- S6453** Contour 21 grab rail straight 50cm long x 35mm diameter
- S1765** Nisa Lowline 170cm x 70cm steel bath with 2 tapholes and handgrips
- S9137** Bracket concealed with clamps and centre waste support for Portman 21 washbasins 60 and 50cm
- S6460** Contour 21 grab rail straight 110cm long x 35mm diameter
- A7006** Contour 21+ thermostatic 2 hole rim mounted bath filler with thermal cleanse feature and rim mounting legs
- S8920** Trap 1½" plastic resealing bottle, 75mm seal, multi-purpose outlet
- A5900** TMV thermostatic mixing valve, 15mm

ILLUSTRATED PRODUCT DETAILS

Sizes	Finishes
S2311 w:50 x d:42	S1699 <input type="checkbox"/> White (01)
Weights	S3054 <input type="checkbox"/> White (01)
S1699 48.35 KG	S3654 <input type="checkbox"/> White (01)
S3054 25.86 KG	S4066 <input type="checkbox"/> White (01)
S3654 16.70 KG	S2311 <input type="checkbox"/> White (01)
S4066 1.55 KG	E0157 <input type="checkbox"/> Neutral / No Finish
S2311 12.73 KG	
E0157 0.16 KG	
S8733 0.35 KG	
S6454 2.00 KG	
S6360 3.15 KG	
S6363 0.34 KG	



ACCREDITATIONS

S3654(01)

Unified Water Label 4.5 Average Flushing Volume (Litres)

S1699(01)

Unified Water Label 147.0 Litres

A7005(AA)

Unified Water Label 20.00 Litres Per Minute

S1765(01)

Unified Water Label 147.0 Litres

A7006(AA)

Unified Water Label 20.00 Litres Per Minute

Doc M Bathroom - Individual Items

S6452 0.62 KG
A7005 0.00 KG
S8830 1.78 KG

Materials

S1699 Porcelain Enamelled Steel
S3054 Vitreous China
S3654 Vitreous China
S4066 Plastic
S2311 Vitreous China
E0157 Metal
S8733 Chrome Plated Metal
S6454 Aluminium
S6360 Aluminium
S6363 Aluminium
S6452 Aluminium
A7005 Chrome Plated Brass
S8830 Mixed Material

(67)
S8733  Chrome (AA)
S6454  White (AC)
S6360  White (AC)
S6363  White (AC)
S6452  White (AC)
A7005  Chrome (AA)
S8830  Chrome (AA)

Capacity

S1699 147.0 litres (to overflow)
S3654 4.5 litres

Flow rates

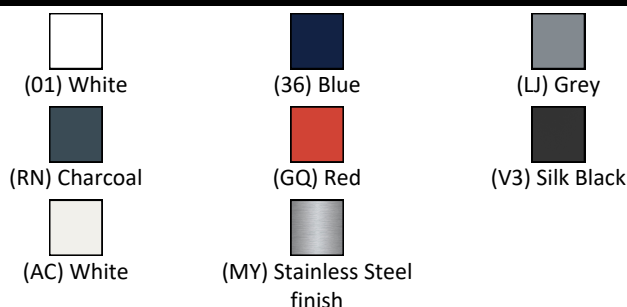
A7005 20 Litres per minute @ 3 bar pressure



FEATURES



FINISH OPTIONS



Standards

Vitreous china to BS 3402.

Special Notes

For LRV & RAL numbers see Doc M introduction.
 S6360 hinged support x 1 (minimum).
 S6454 60cm rail x 4 or x 3 if towel rail (by others) is used.
 S6452 45cm rail x 1 for back of door.
 S6462 175cm straight rail for side of bath.
 Optional S6453 50cm rail x 1 for rear of bath.
 Panels and boxing in by others.
 Under washbasin mixer A5900(AA) to TMV3