

Portman 21 Washbasin 50cm No Taphole, Chainstay Or Overflow

ILLUSTRATED

S2251	Portman 21 washbasin 50cm, no tapholes no overflow no chainstay hole
A4849	Sensorflow 21 compact 230mm panel mounted spout with integral sensor, 3.7 litre per minute aerated spray outlet, combined inline servicing valve and filter, mains
S8720	(WT1) Waste 1½" brass strainer waste, 80mm unslotted tail
S8920	(TRR1/P) Trap 1½" plastic resealing bottle, 75mm seal, multi-purpose outlet

OPTIONS

E0157	Wall fixing set
A4180	Sensorflow 21 tubular panel mounted 150mm projection spout with anti-splash 3.7 litres per minute aerated outlet, remote panel sensor, copper tube inlets, mains
A4845	Sensorflow 21 compact tubular panel mounted 150mm projection spout, anti splash or anti vandal laminar flow outlet, integral sensor, copper tube inlets, battery
A4846	Sensorflow 21 compact 150mm panel mounted spout with integral sensor, 3.7 litre per minute aerated spray outlet, combined inline servicing and filter, mains
A4847	Sensorflow 21 compact tubular panel mounted 150mm projection spout, anti splash or anti vandal laminar flow outlet, integral sensor, copper tube inlets, link
A4178	Sensorflow 21 panel mounted 150mm cast spout with integral sensor, flexible inlet tail, solenoid valve, combined servicing valve and filter, sensor and solenoid cables and flex connectors, mains
A5900	TMV thermostatic mixing valve, 15mm
S9137	Bracket concealed with clamps and centre waste support for Portman 21 washbasins 60 and 50cm

ILLUSTRATED PRODUCT DETAILS

Sizes

S2251 w:50 x d:42

Weights

S2251 12.73 KG

A4849 2.30 KG

S8720 0.23 KG

S8920 2.00 KG

Materials

S2251 Vitreous China

A4849 Chrome Plated Brass

S8720 Chrome Plated


S8920 Plastic

Finishes

S2251  White (01)

A4849  Chrome (AA)

S8720  Chrome (AA)

S8920  Neutral / No Finish (67)

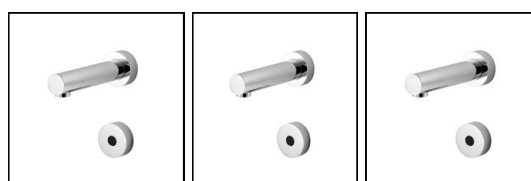
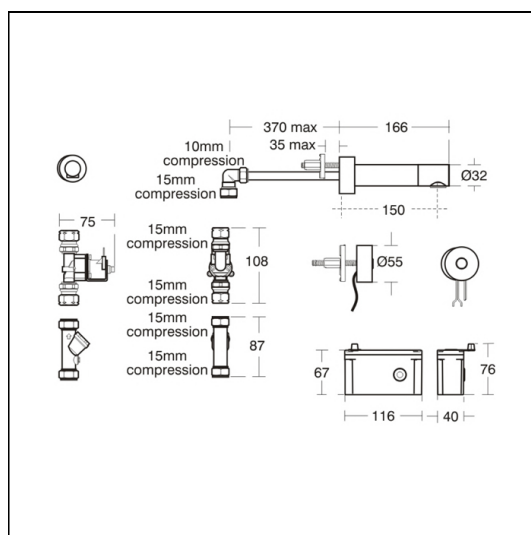
Flow rates

A4849 3.7 Litres per minute @ 3 bar pressure

FINISH OPTIONS

 (AA) Chrome

 (GN) Ultra Steel



FEATURES



Portman 21 Washbasin 50cm No Taphole, Chainstay Or Overflow

Special Notes

S9137 Bracket for 60cm& 50cm basins S9138 Bracket for 40cm basins

Recommended fixing heights (floor to front rim);

Nursery use 600mm

Infant use 700mm

Junior use 750mm

Senior/adult use 780-800mm.

Washbasin wall mounted using E015767 wall fixing set or panel mounted

using E006267 fixing set