

Contour 21 Close Coupled WC Pan 75cm Proj Doc M Ambulant - Individual Items

ILLUSTRATED

- S3054** Contour 21 close coupled raised height toilet bowl with horizontal outlet, 75cm projection with floor fixing kit
- S6454** Contour 21 grab rail straight 60cm long x 35mm diameter
- S6452** Contour 21 grab rail straight 45cm long x 35mm diameter
- S5093** Clothes hook screw to wall, plastic
- S3654** Contour 21 close coupled 4.5 litre delay fill single flush syphon cistern for 75cm projection bowl, bottom supply, internal overflow with spatula lever (reversible) and secure cover fastener
- S4066** Contour 21 toilet seat only, top fixing hinges and retaining buffers

OPTIONS

- S4065** Contour 21 toilet seat and cover, top fixing hinges

ILLUSTRATED PRODUCT DETAILS

Weights

- S3054** 25.86 KG
- S6454** 2.00 KG
- S6452** 0.62 KG
- S5093** 1.76 KG
- S3654** 16.70 KG
- S4066** 1.55 KG

Materials

- S3054** Vitreous China
- S6454** Aluminium
- S6452** Aluminium
- S5093** Vitreous China
- S3654** Vitreous China
- S4066** Plastic

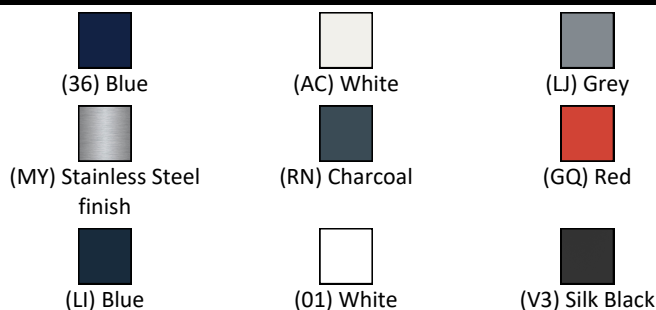
Finishes

- S3054**  White (01)
- S6454**  White (AC)
- S6452**  White (AC)
- S5093**  White (AC)
- S3654**  White (01)
- S4066**  White (01)

Capacity

- S3654** 4.5 litres

FINISH OPTIONS

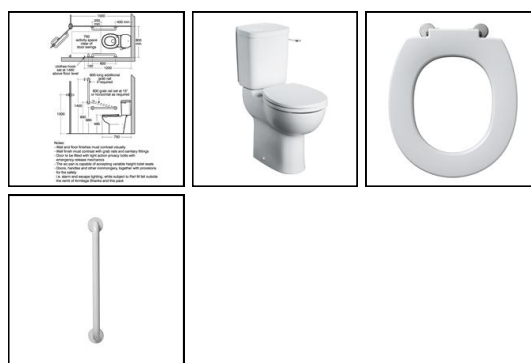
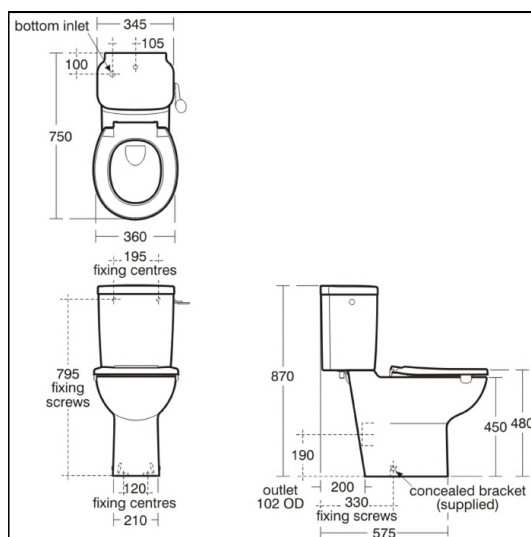
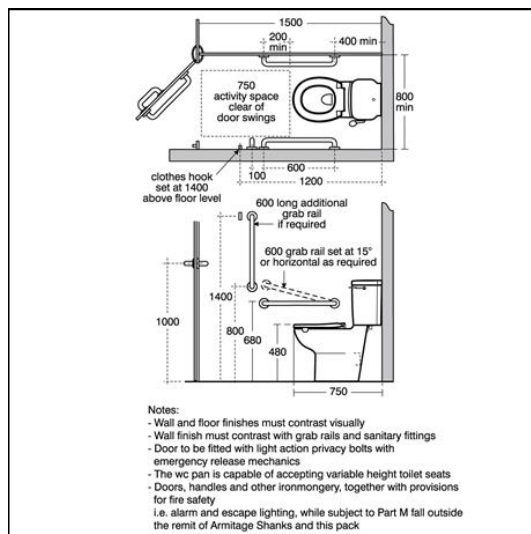


Standards

Vitreous china to BS 3402

Special Notes

For LRV and RAL numbers see Doc M introduction.



ACCREDITATIONS

S3654(01)



FEATURES



E: info@idealspec.co.uk | T: 0870 122 8822 | F: 0870 122 8282 | www.idealspec.co.uk

Ideal Standard (UK) Ltd. makes every effort to ensure that the information provided on its website is accurate. However, we cannot guarantee this, and accept no liability for any information or advice given via its website.

Armitage
Shanks

Contour 21 Close Coupled WC Pan 75cm Proj Doc M Ambulant - Individual Items

600mm grab rail S6454 x 3 for room set.
450mm grab rail S6452 for back of door.

White:Ral=9016, LRV=87
Blue:Ral=5011, LRV=6
Red:Ral=3020, LRV=12
Grey:Ral=7005, LRV=19
Charcoal:Ral=7016, LRV=8