

Dee Bi Sink & LH Slophopper, No Taphole

ILLUSTRATED

- S3336** (DU HS) Dee left hand slop hopper with sink, back inlet
- S4663** Flushpipe 850 x 35mm diameter for slop hopper
- B1684** Nimbus 21 1/2" x 100mm bib tap extensions (pair)
- S9281** Leg 900mm stainless steel to floor (2 required)
- S3584** P trap outlet, plastic for slop hoppers
- S8925** (TRR2/P) Trap 1 1/2" plastic resealing bottle with 75mm seal, multi-purpose outlet
- S8760** Waste 1 1/2" unslotted strainer waste, 50mm long, 75mm dia. brass
- S8270** (TB H1) Markwik 1/2" lever action bib taps
- B1686** Nimbus 21 concealed bib tap wall mount with self centralising installation (pair)

OPTIONS

- S4385** High Level Lever Assembly For Conceala 1 Cistern
- S3632** Conceala 1 cistern 9 litre single flush syphon, alternative height plastic flushbends side supply and internal overflow, no lever
- S3626** Conceala 2 high level 6 litre cistern, single flush syphon, side supply, internal overflow, lever with chain

ILLUSTRATED PRODUCT DETAILS



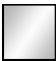


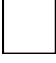



Weights

- S3336** 20.00 KG
- S4663** 2.00 KG
- S9281** 0.44 KG
- S3584** 0.26 KG
- S8925** 0.33 KG
- S8760** 0.23 KG
- S8270** 1.65 KG

Materials

- S3336** Stainless Steel
- S4663** Plastic
- B1684** Chrome Plated Brass
- S9281** Metal
- S3584** Plastic
- S8925** Plastic
- S8760** Chrome Plated Metal
- S8270** Chrome Plated Brass
- B1686** Chrome Plated Brass

Finishes

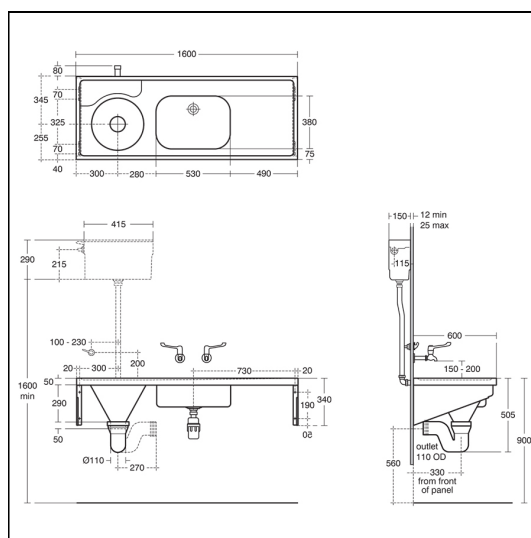
- S3336**  Stainless Steel finish (MY)
- S4663**  Neutral / No Finish (67)
- B1684**  Chrome (AA)
- S9281**  Stainless Steel finish (MY)
- S3584**  White (01)
- S8925**  Neutral / No Finish (67)
- S8760**  Chrome (AA)
- S8270**  Chrome (AA)
- B1686**  Chrome (AA)

Standards

1.2mm Stainless steel sheet conforms to BS EN 10088:Part 2:2005. Other items to relevant standards. NHS specification HBN 00-10. EN 13310.

Special Notes

Note HTM64 does not cover for the provision of leg supports to floor.



FEATURES

