

Dee Ti Sink & RH Slophopper, No Taphole

ILLUSTRATED

- S3337** Dee right hand slop hopper with sink, top inlet
- B1684** Nimbus 21 1/2" x 100mm bib tap extensions (pair)
- S4662** Plastic Flushpipe For Top Inlet Slop Hopper
- S1164** Regal high level plastic 6 litre cistern, single flush syphon, side supply, internal overflow, metal chain pull with 4 piece plastic flushpipe (fittings are reversible)
- S3584** P trap outlet, plastic for slop hoppers
- S8925** (TRR2/P) Trap 1 1/2" plastic resealing bottle with 75mm seal, multi-purpose outlet
- S8760** Waste 1 1/2" unslotted strainer waste, 50mm long, 75mm dia. brass
- S8270** (TB H1) Markwik 1/2" lever action bib taps
- B1686** Nimbus 21 concealed bib tap wall mount with self centralising installation (pair)

OPTIONS

- S9281** Leg 900mm stainless steel to floor (2 required)

ILLUSTRATED PRODUCT DETAILS




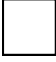
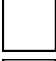


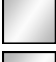

Weights

- S3337** 20.00 KG
- S4662** 0.10 KG
- S1164** 3.40 KG
- S3584** 0.26 KG
- S8925** 0.33 KG
- S8760** 0.23 KG
- S8270** 1.65 KG

Materials

- S3337** Stainless Steel
- B1684** Chrome Plated Brass
- S4662** Plastic
- S1164** Plastic
- S3584** Plastic
- S8925** Plastic
- S8760** Chrome Plated Metal
- S8270** Chrome Plated Brass
- B1686** Chrome Plated Brass

Finishes

- S3337**  Stainless Steel finish (MY)
- B1684**  Chrome (AA)
- S4662**  White (01)
- S1164**  White (01)
- S3584**  White (01)
- S8925**  Neutral / No Finish (67)
- S8760**  Chrome (AA)
- S8270**  Chrome (AA)
- B1686**  Chrome (AA)

Capacity

- S1164** 6.0 litres

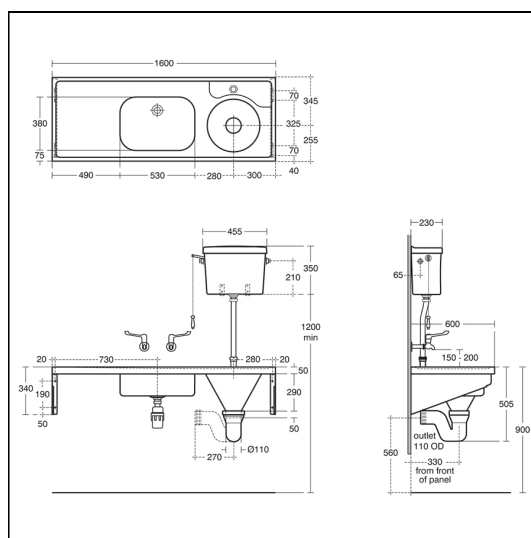
Standards

Stainless steel sheet conforms to BS EN 10088:Part 2:2005. Other items to relevant standards. NHS specification HBN 00-10. EN 13310.

Special Notes

For the disposal of liquid and solid waste in connection with clinical procedures. HTM64 does not cover for the provision of leg supports to floor.

Note 2.94 states that "Exposed services are visually unattractive, can be unhygienic and are difficult to clean and decorate. Indeed the additional



FEATURES



Dee Ti Sink & RH Slophopper, No Taphole

cost of the latter over a number of years may well exceed any savings in initial capital costs"