

Doc M Contour 21 Ambulant Care Close Coupled Pack

ILLUSTRATED

S6958 Doc M Contour 21 Ambulant care WC pack with close coupled WC and cistern with spatula lever, grab rails, seat no cover with retaining buffers and white plastic clothes hook

ILLUSTRATED PRODUCT DETAILS

Weights

S6958 69.65 KG

Finishes

S6958  White (AC)

Materials

S6958 Vitreous China

FINISH OPTIONS



(AC) White



(LI) Blue

Standards

Vitreous china to BS 3402

Special Notes

Flushing lever can be fitted on left or right hand of cisterns. All washrooms must have at least one ambulant accessible wc compartment. Supplied with layout drawings, detailing the fixing positions necessary for Doc M compliance.

See seat and rail pages for individual colour options

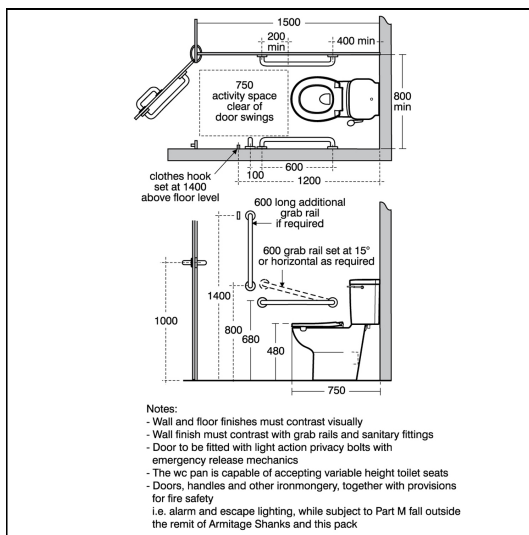
White:Ral=9016, LRV=87

Blue:Ral=5011, LRV=6

Red:Ral=3020, LRV=12

Grey:Ral=7005, LRV=19

Charcoal:Ral=7016, LRV=8



ACCREDITATIONS



FEATURES

