

Doc M Sensorflow 21 Wall Hung Pack RH

ILLUSTRATED

S6987 Doc M contour 21 and Sensorflow 21 wall mounted right hand pack, sensor tap and TMV3 thermostatic valve, rimless WC pan and support brackets, Conceala water saving delay fill 4.5litre Sensorflow cistern, hinged support rail and toilet roll holder

ILLUSTRATED PRODUCT DETAILS

Weights

S6987 69.65 KG

Finishes

S6987  Chrome (AA)

Materials

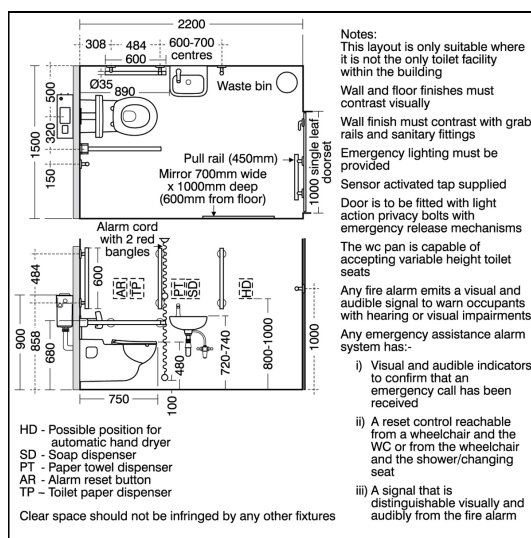
S6987 Mixed Material

Standards

Vitreous china to BS 3402.

Special Notes

Doc M packs are available both right and left hand corner arrangement, the washbasin in the pack is handed so the tap is positioned closest to the seated user. Supplied with layout drawings, detailing the fixing positions necessary for Doc M compliance. Mains powered Sensorflow products must be connected to a continuous permanent power supply of these require 220-240 volts and each 1 having its own fuse spur.



ACCREDITATIONS



FEATURES

